

2 Windows Set Up

The Warrior Well Data Acquisition System runs in the Microsoft Windows operating system. This gives the user many powerful tools and facilities not previously available in an inexpensive logging system. One of the principle advantages is that the system is multitasking, meaning that several programs (or tasks) may be running on one computer at the same time. Within the Warrior system, for example, several different log plots may be displayed independently on the screen and other logs may be directed to plotters. Headings may be prepared, and final log presentations set up, all while continuing to acquire data.

Another advantage of the Windows environment is the graphical user interface, which presents the functions available in the system in an easy to understand manner (well, fairly easy). While the simple interface makes the Warrior easy and fast to operate, the full power of the system can only be realized when an understanding of Microsoft Windows itself has been acquired. It is therefore strongly recommended that, after some initial experimentation with the system, the Windows User Guide is studied and the Windows Tutorials run. Courses are also available on videotape, and other media, from many sources.

2.1 Windows Printer Setup

To be able to produce a hardcopy of your data from the Warrior software, a Windows printer must first be installed. The Warrior software includes the capability to print / plot to common plotters while logging but the software uses the Windows spooling to buffer the plotter output. Other plotters may be used to plot logs through Windows after data recording as stopped.

2.1.1 Windows 7 Printer Installation

To facilitate this operation a USB Port has been assign on the Interface Panel (rear Plate) and marked "Plotter". It is recommended to use this USB port for your printer connection. With the printer turned off, plug in the USB cable or USB to Centronix Printer Adapter cable into the USB port. Make sure that the USB cable from the computer to the Interface Panel is properly connected. Turn the Printer On.

Windows will often install printer driver automatically. To see if Windows has installed the printer, click on the Windows start button and then click on the Device and Printers selection.

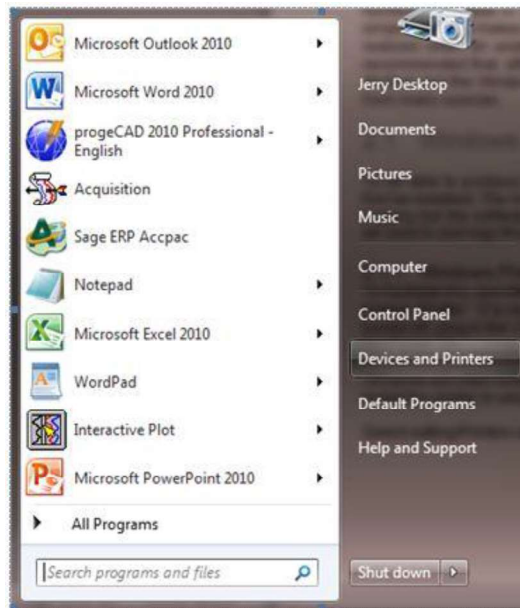


Fig. 2.1.1 Windows Start Button and Devices and Printers selection

Look in the Printers and Faxes section and see if the printer that you have connect has been automatically installed. If it hasn't been, then Windows drivers will have to be installed manually. At this point the manufacturer's drivers must be available. Drivers for black and white plotters normally supplied by Scientific Data Systems, such as Printrex and ISYS, are on the Warrior installation DVD.

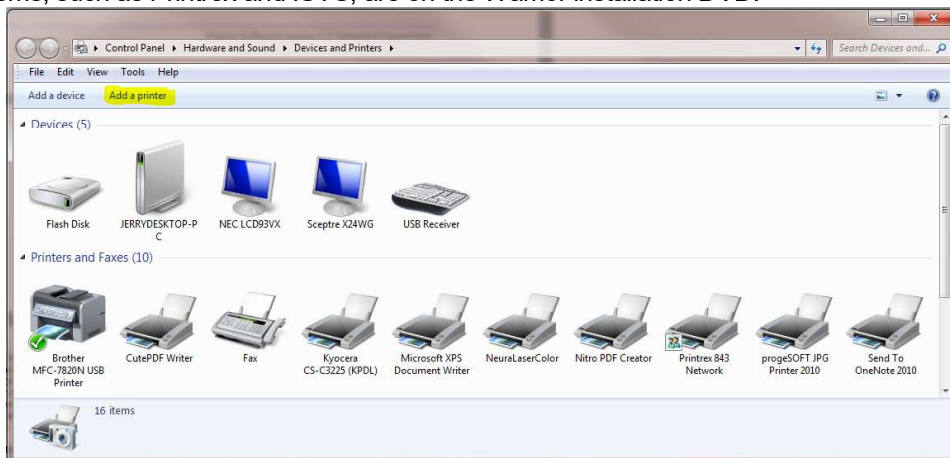


Fig. 2.1.2 Click on Add a printer

Place the CD /DVD or other media containing the device drivers in the computer so that they are available when required during the printer installation. Click on Add a Printer in the Windows Devices and Printers window.

Click on the Add a local printer selection

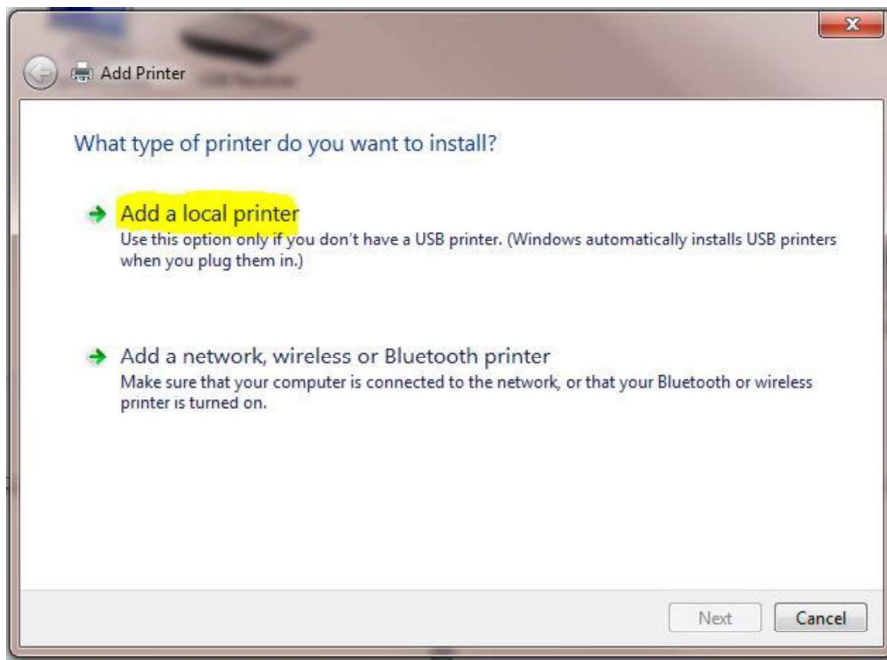


Fig. 2.1.3 Add a local printer

Click on the Use existing port selection, then drop down the scroll down printer port list to the right of the selection until you find USBxxx (Virtual printer port for USB). There may be several USB virtual printer ports, typically the highest numbered one is the last device that was plugged in to a USB Port. After selecting a USB port click the **[Next]** button.

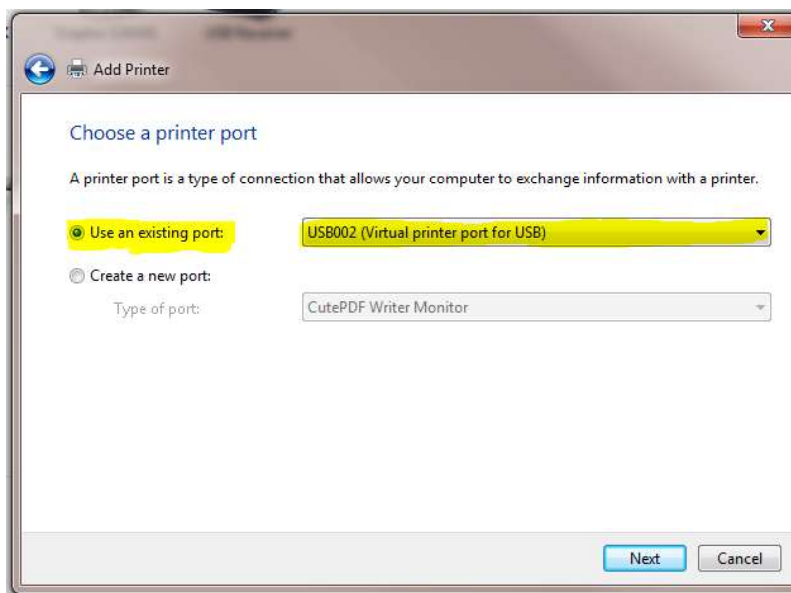


Fig. 2.1.4 Use Existing Port

The next step is to select the location of the printer driver to be installed.

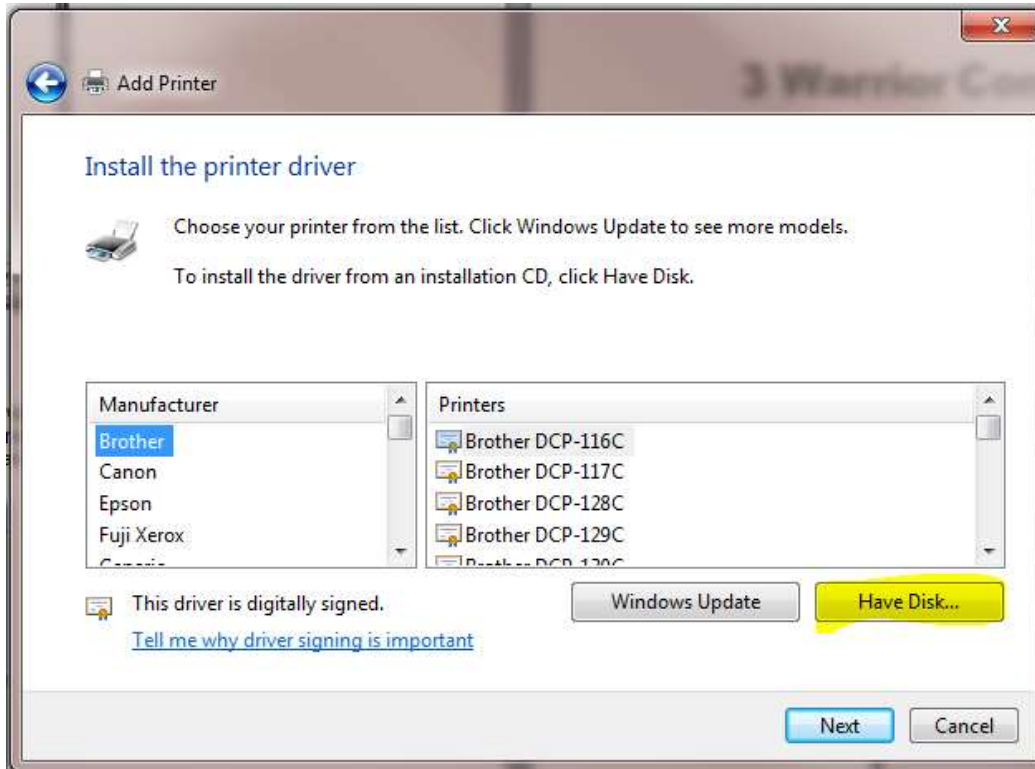


Fig. 2.1.5 Click [Have Disk]

The list on the left side of the window are printer manufacturers that Microsoft supports or that have previously been installed on the computer. Check the list to see if the manufacturer is in the list. If it is not in the list, click on [Have Disk ...].

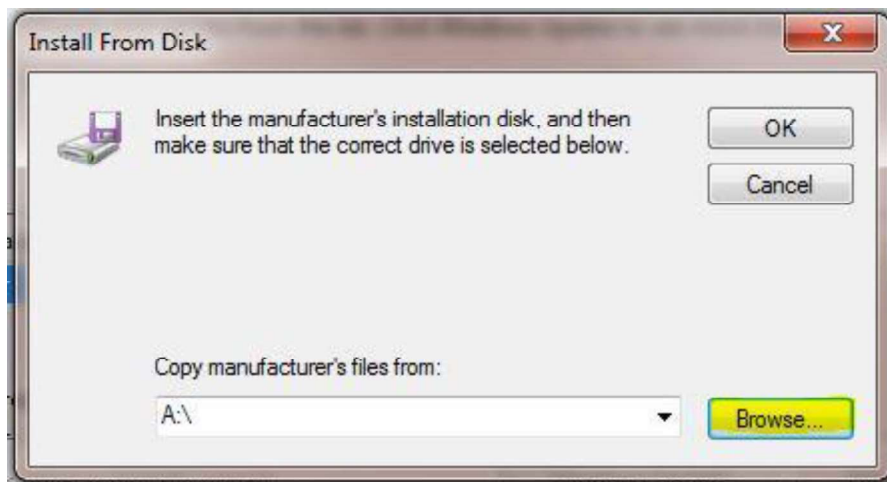


Fig. 2.1.6 Plotter Manufacturer Installation disk

Click on the [Browse ...] button to locate the drivers for the printer. The Warrior Installation CD contains drivers for the plotters that Scientific Data Systems has supplied.

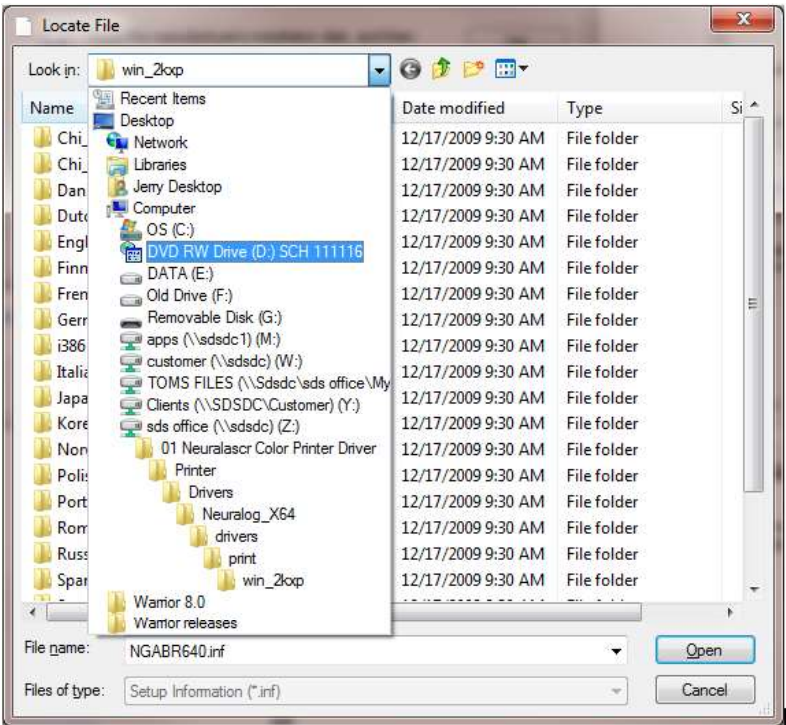


Fig. 2.1.7 Warrior CD

Click the Look in: drop down list in the Locate File window to find the Warrior Installation CD in the computer CD / DVD Drive and double click on it.

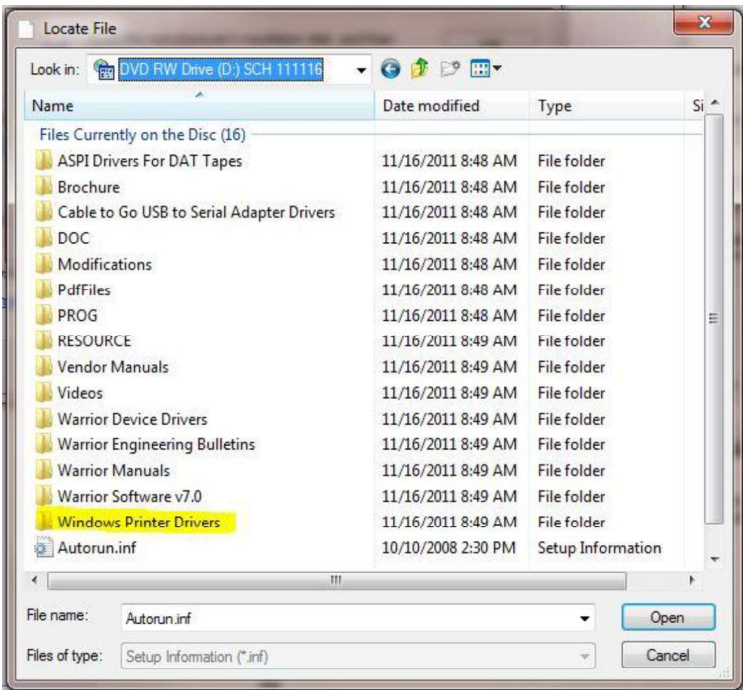


Fig. 2.1.8 Windows Printer Drivers on Warrior DVD

On the Warrior CD, locate the Windows Printer Drivers folder and double click on it.

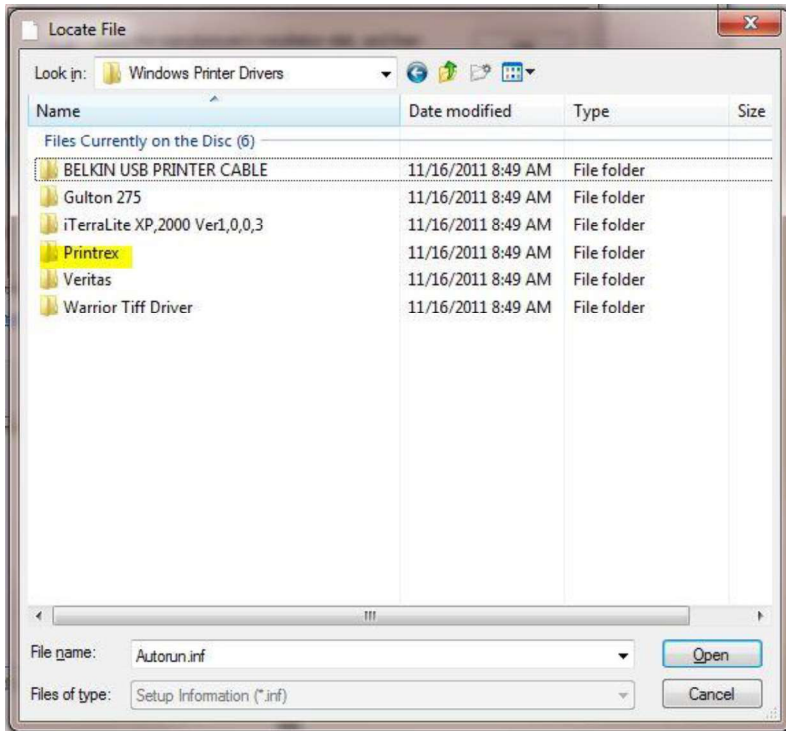


Fig. 2.1.9 Printrex Drivers Folder

Select the plotter manufacturer and double click on that folder.

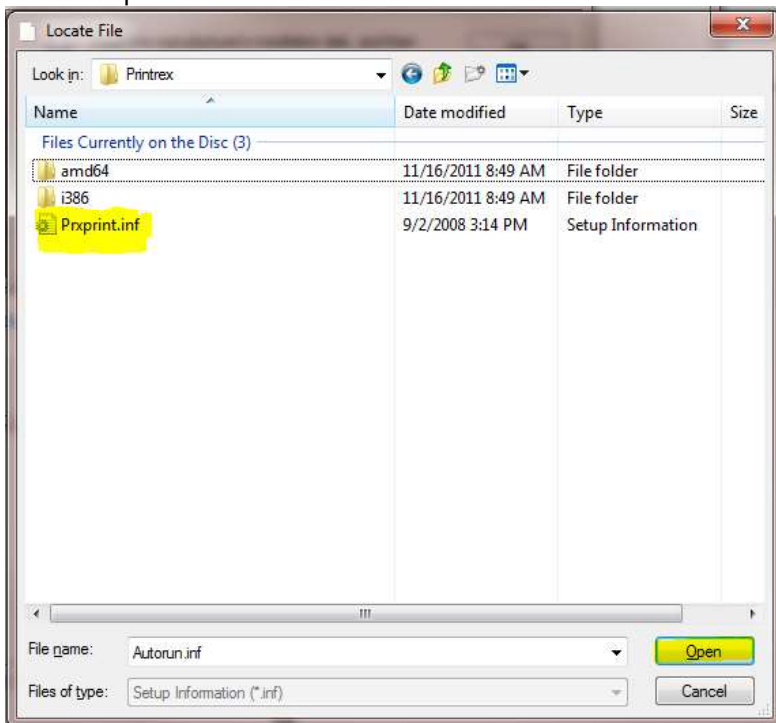


Fig 2.1.10 Windows Drivers information file

When the proper .inf, or setup information file has been located, click the file and then click on the [Open] Button.

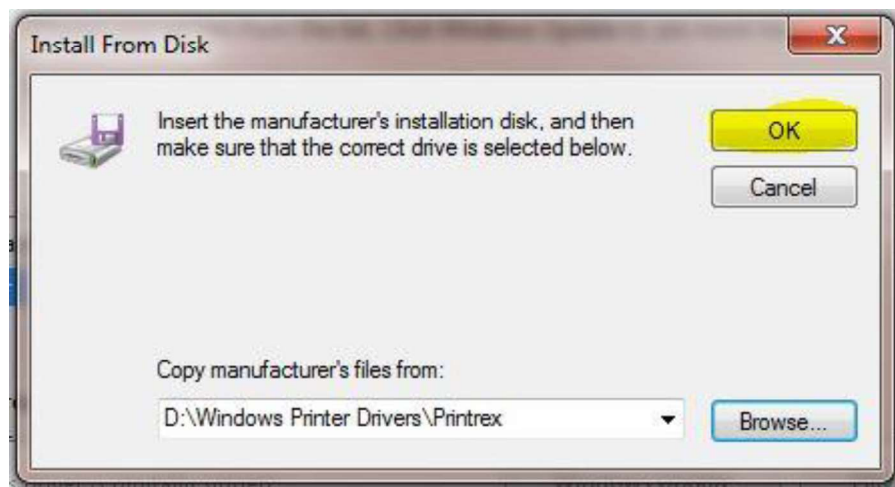


Fig 2.1.11 Opening Printrex Drivers

This should return you to the Install from Disk window with the folder with the manufacturers files selected. Click the [OK] button to continue.

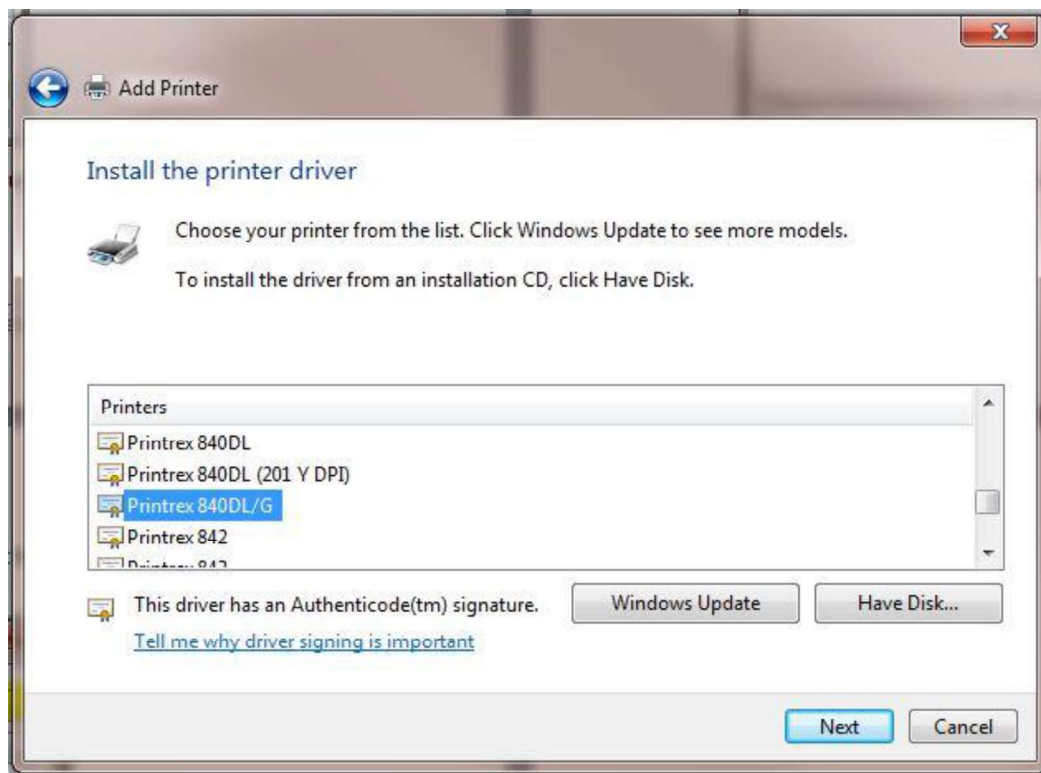


Fig. 2.1.12 Selecting printer

You should now have a drop down list of the manufacturers printers. Scroll down the list to find the model of the printer that in being installed and click [Next].

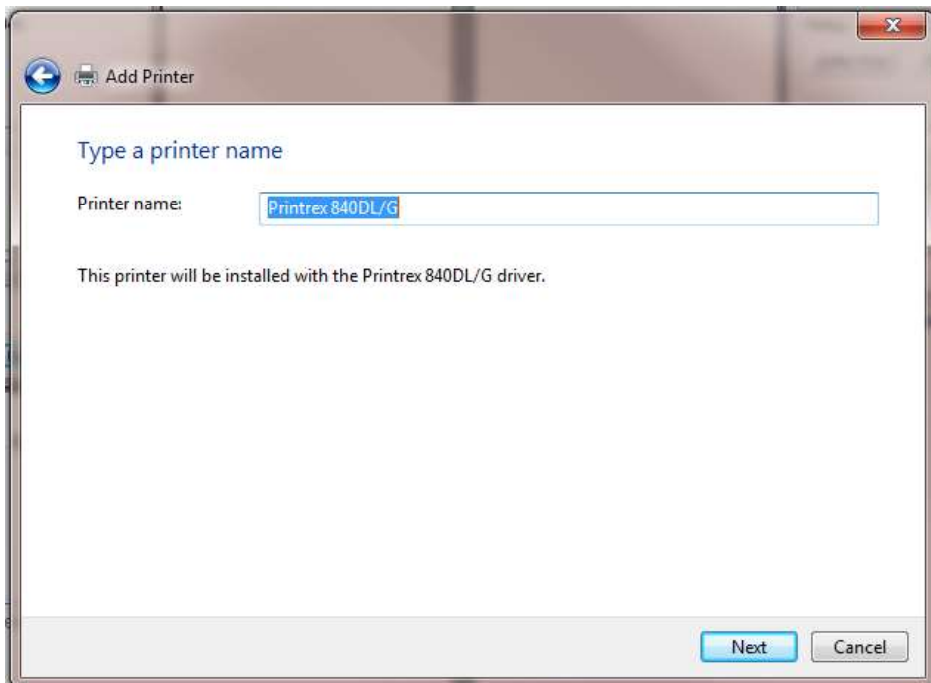


Fig. 2.1.13 Installing Printrex 840 DL/G Plotter

Either enter a new printer name or accept the printer name Windows has assigned by clicking the [Next] button.

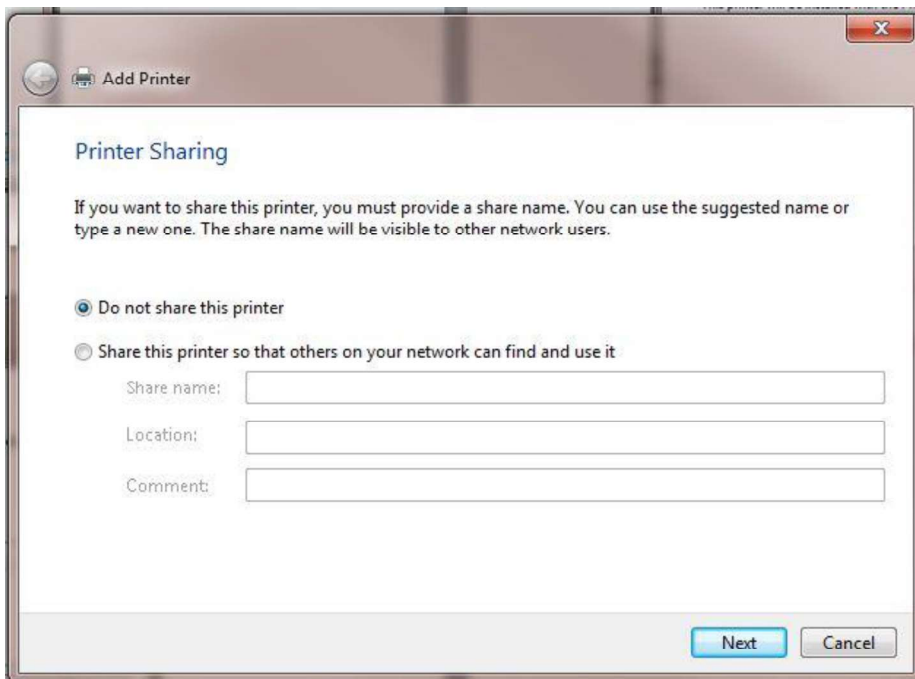


Fig. 2.1.14

Warrior will not print through a shared printer (Warrior does print through network printers) so select the Do not share this printer option and then click [Next].

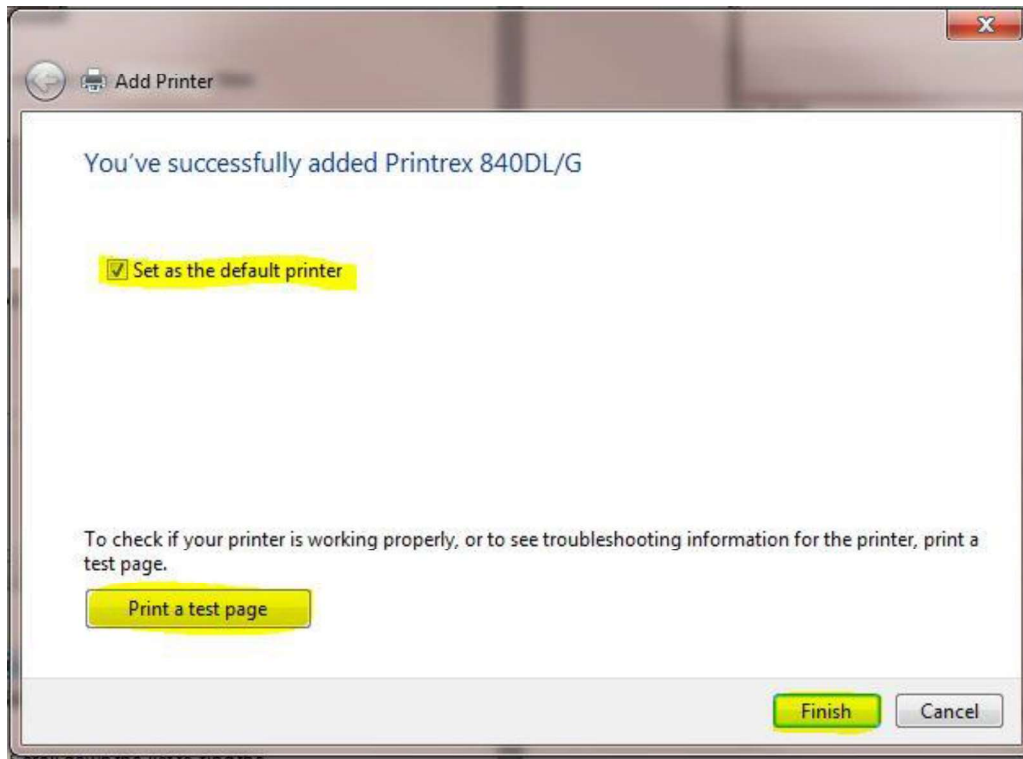


Fig. 2.1.15 Finish printer installation

If this is the only printer to be used on the computer, click the Set as the default printer check box.

2.2 Create Shortcut to Device Manager on Desktop

The Windows Device manager is a useful tool in determining device installation problems. It is suggested that a shortcut to the device manager be placed on the Windows desktop. To place the shortcut, click on the Windows Start button. Select All Programs. Select Accessories. Select and Open Windows Explorer. Navigate to C:\Windows\system32 and find devmgmt.msc. Right-click on the file, select Send to -> Desktop (create shortcut). Once the file is on the Windows Desktop, right click on the Icon and select Rename. Rename this shortcut to Device Manager.



FIG: 2.2.1 Device Manager Icon and renamed Icon

Double click on the Device Manager Icon to open the Device Manager. Scroll down the list to Universal Serial Bus Controllers and click the + sign beside it to expand and see what Universal Serial Bus Devices are installed.

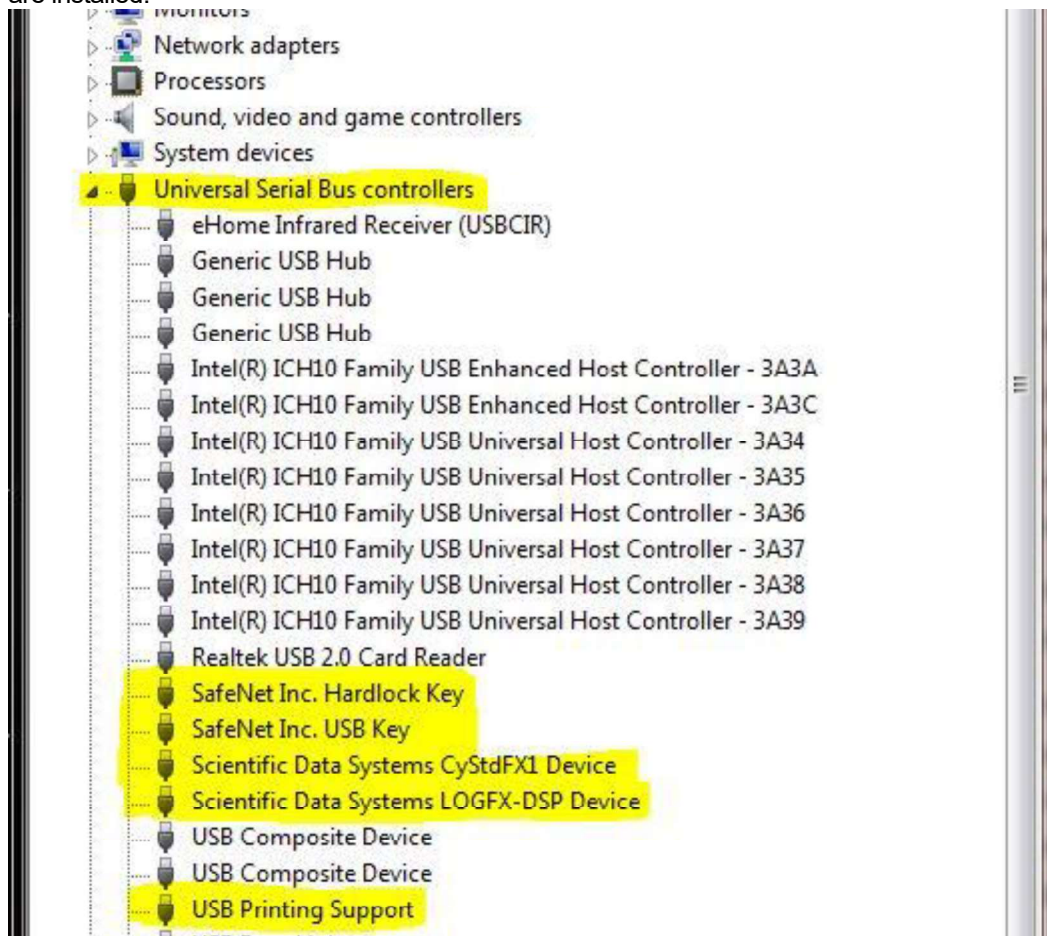


FIG: 2.2.2 Device Manager Path

Typical devices installed for Scientific Data Systems configurations include:

SafeNet Inc. Hardlock Key	Warrior software key
SafeNet Inc. USB Key	Warrior software key
Scientific Data Systems CyStdFX1	USB44 Board
Scientific Data Systems LOGFX-DSP	DSP

Other Devices that also may be seen depending upon the system and peripherals:

Scientific Data Systems CYSTD	Upgrade Panel UPUSB DAC
Scientific Data Systems CYSIM	Simulator Box
Scientific Data Systems CyShPnlFX1	Shooting Panel USBAUX
Scientific Data Systems CyAuxFX1	USBAUX
Scientific Data Systems CyPipFX1	Pulse Interface Panel

2.3 Scientific Data Systems Device Management

The Warrior software installs the Icon Scientific Data Systems Devices in the Windows Control Panel. The control panel should be viewed as Large Icons or Small Icons to be able to see the Scientific Data Systems Device Manager. Scientific Data Systems devices can be removed and reinstalled from this program. The properties window shows all Scientific Data System devices and whether the computer has installed drivers and if the devices are currently connected.



FIG: 2.3.1 Scientific Data Systems Device in the Windows Control Panel

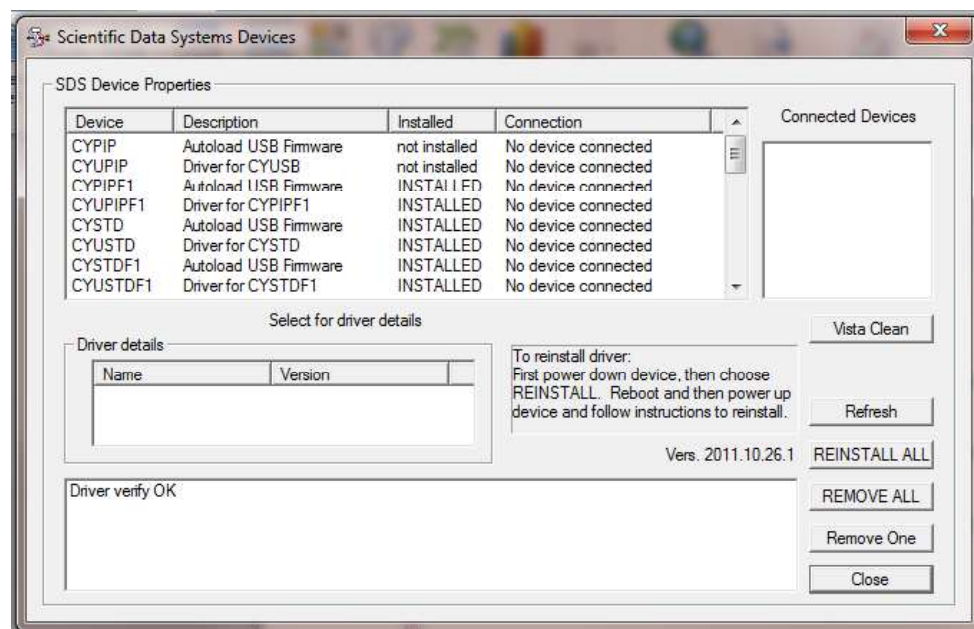


Fig. 2.3.2 Scientific Data Systems Devices