

8 Warrior Backup

Every computer system will, sooner or later, suffer a failure, like a disk crash, where potential loss of programs and/or data is possible. This will generally happen at the most inconvenient time. **The importance of keeping current backups cannot be overemphasized.** It is vital that current backups are kept of all essential programs and data.

The warrior system is usually configured for the selection of services to be run by a given client. This information is primarily contained in three files, namely wproperties.ini, services.ini, and tools.ini. A copy of all your customized files can be backed up to USB Memory/Hard disk by using “ Configuration Backup/Restore” utility.

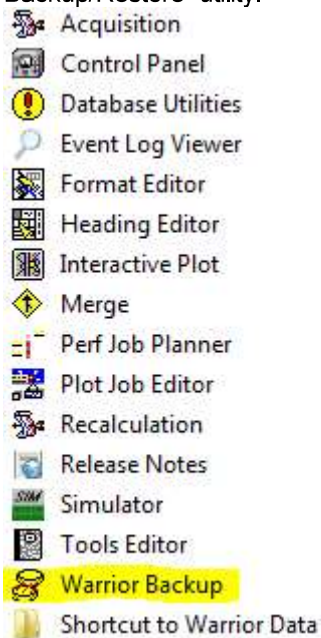


FIG: 8.1 Select Configuration Backup/Restore.

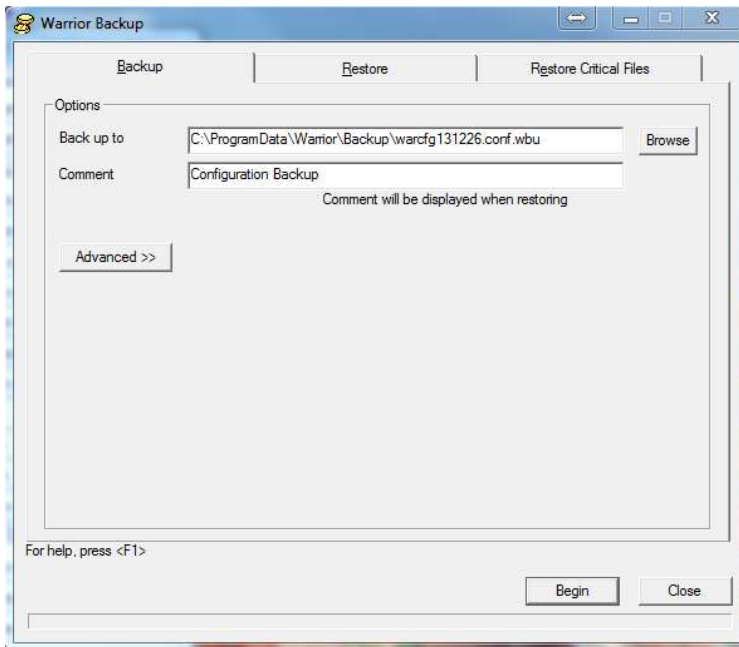


FIG: 8.2 Select Backup, Restore or Restore Critical Files

8.1 Backup

The first tab is used to Backup all you customized files including but not limited to Logo, Services, Depth offsets, calibrations, serial numbers and licenses. With the " wbu " file generated here you can recover all of these or take it on a USB drive to another computer and restore it to the same configuration as the current system. In the Backup to windows you can browse to where you want the backup stored. The comment line lets you add a comment to the file to more easily identify the purpose of the backup. The advanced option allows you select files to include or exclude from the backup, use this option with caution as selecting files other than the defaults may cause the backup file to either skip important files or over write critical software files. To begin the backup you will need to click on the begin button. Once completed a " Backup completed" will be displayed as a status.

8.3 Restore Critical Files

The third tab “ Restore Critical Files “ allows you to restore only the critical system configurations. These files are saved every time acquisition is started if there is a check mark in the “ Do automatic critical backups “ radio button. By clicking on any of the dated files under Critical backup dates the system will show which critical files were backed up.

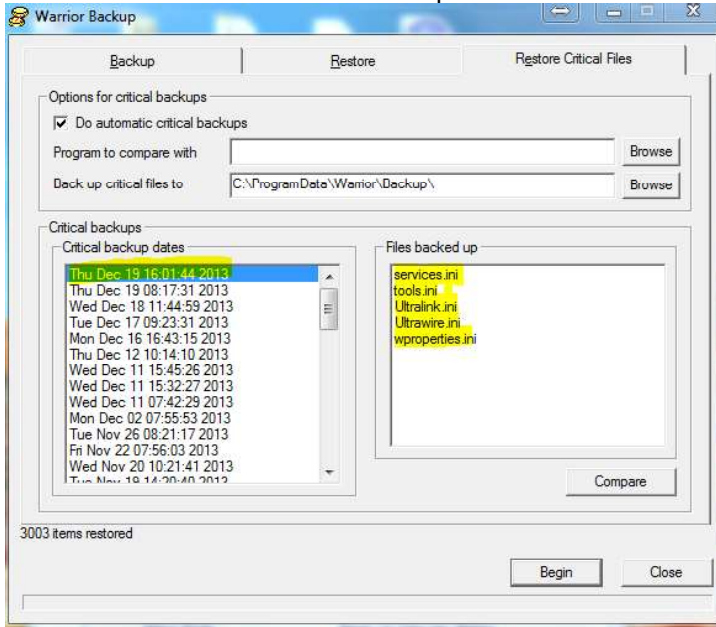


FIG: 8.5 Restore Critical Files

It is generally better to do a “Restore” than a “Restore Critical Files” critical files, Restore Critical Files is a more specific and advanced option.