

24 Convert from 7.0 to 8.0 Warrior

The conversion from Warrior 7 to Warrior 8 is a straight forward process with one exception, if your warrior 7 services use CBL instruments. If you are unsure if you are using CBL or SCBL instruments [goto section 24.4](#).

24.1 Procedure

On the system with Warrior 7, Install Warrior 7 Backup for Warrior 8 “setup_w7bk_2013_11_19001.exe “ you will find this on the CD provided with your system or it can be downloaded from the Scientific Data Systems web site

http://www.warriorsystem.com/private_download/Beta/setup_w7bk_2013_11_19001.exe

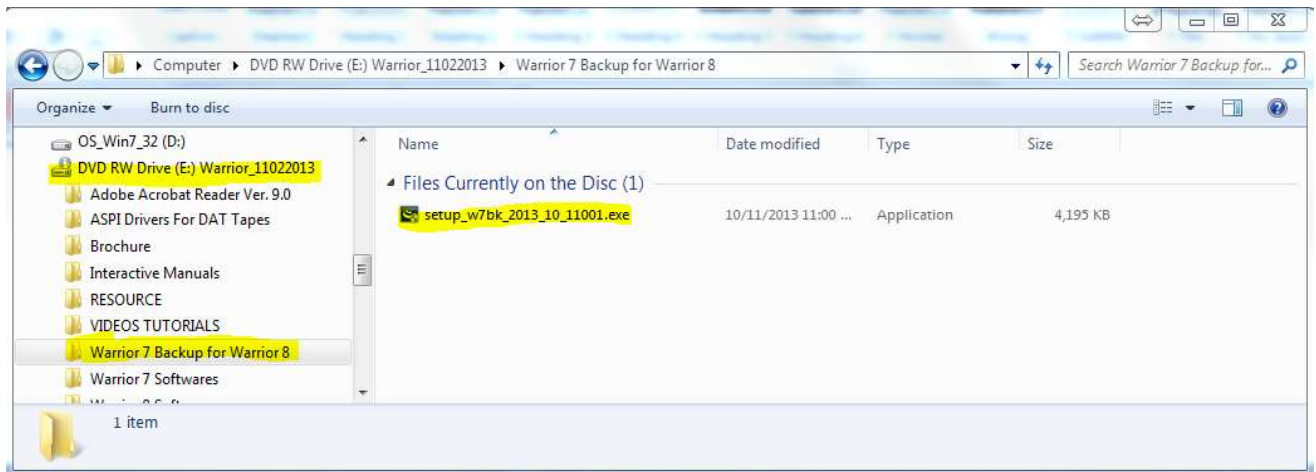


FIG: 24.1 Warrior 7 Backup for Warrior 8

Once installed execute the program. This will convert your Warrior 7 configuration into a warrior 8 compatible configuration. The first thing you may notice is that in warrior 7 configuration backups took the form of a zip file and warrior 8 backups use a wbu extension.

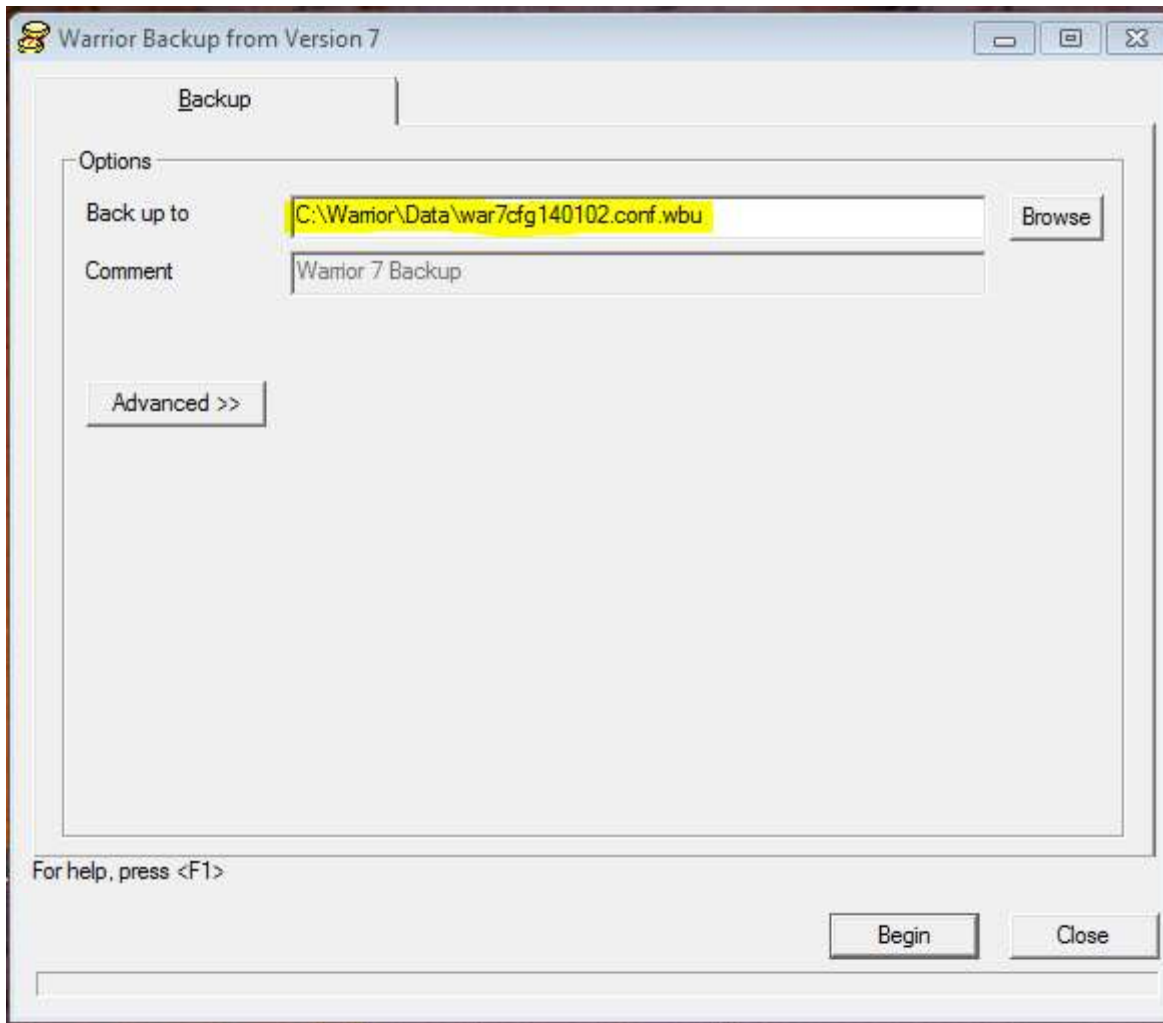


FIG: 24.2 Warrior 7 Backup for Warrior 8 Execution

Make a note of where the backup file will be saved so that you can browse to it later to install the generated backup or copy it to a USB drive to be installed on another computer.

The advanced button lets you modify which files to convert, this option is for the more experienced and is beyond the scope of this manual.

Once you click on begin the software will begin the backup process. You will receive a Backup completed status when finished.

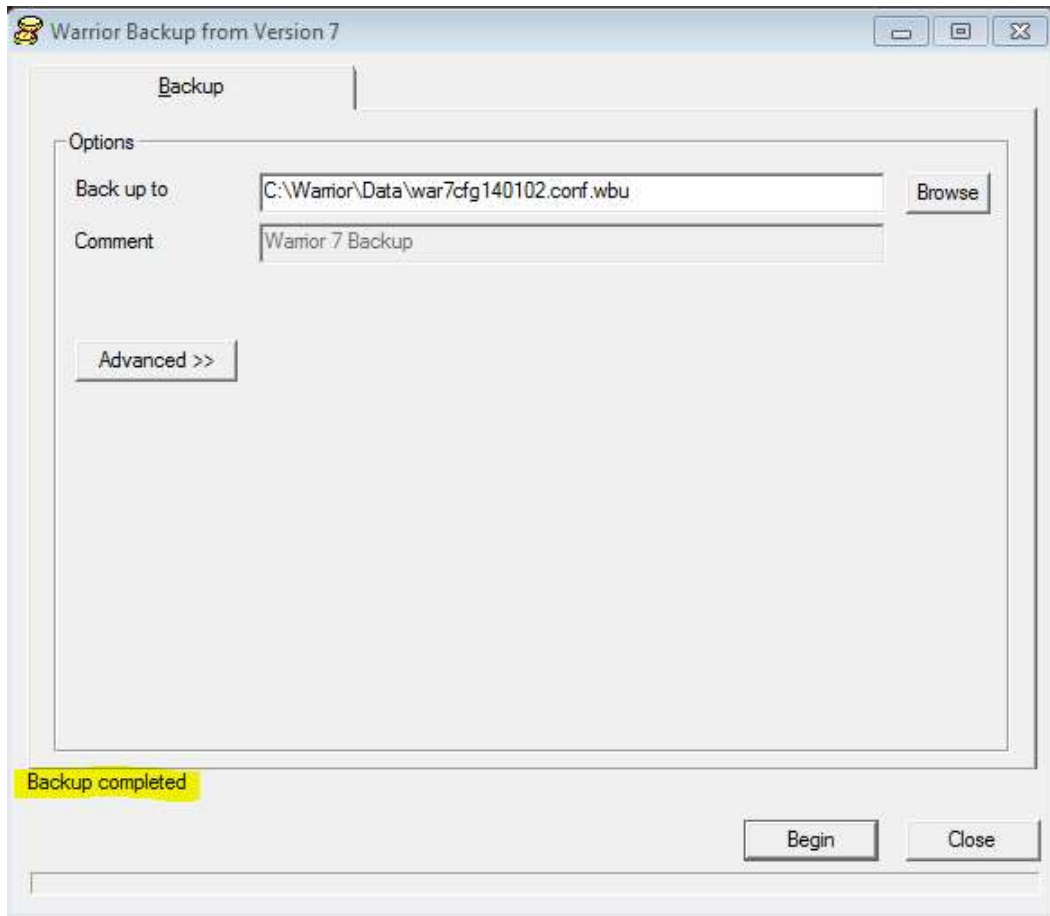


FIG: 24.3 Backup Completed

24.2 Importing WBU file

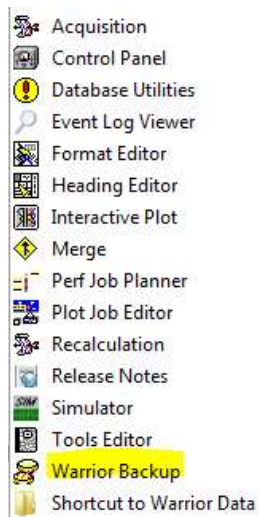


FIG: 24.4 Warrior Backup

Select Restore tab in Warrior Backup and the File created with the Warrior 7 Backup for Warri8. Once selected “ Examining” and a status bar will come up.

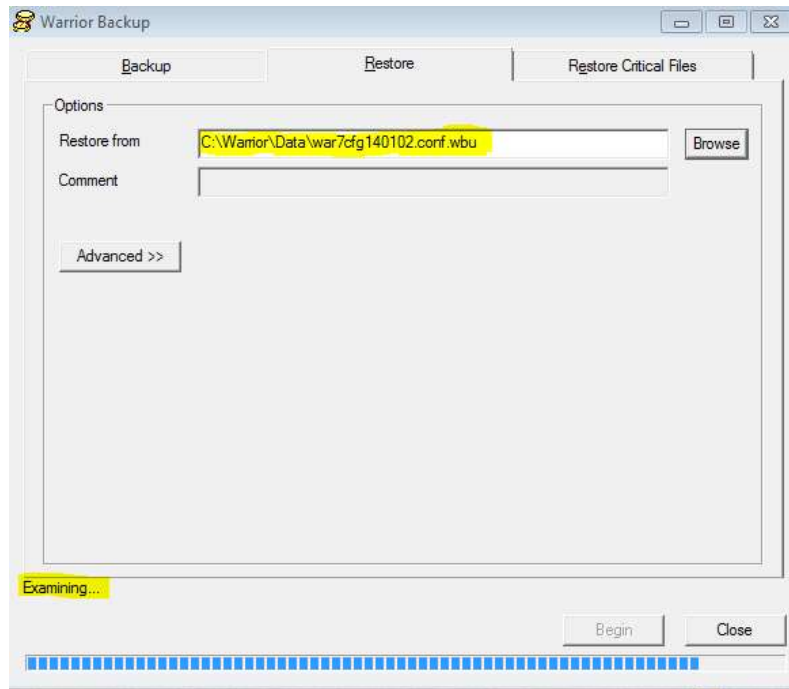


FIG: 24.5 Opening Backup

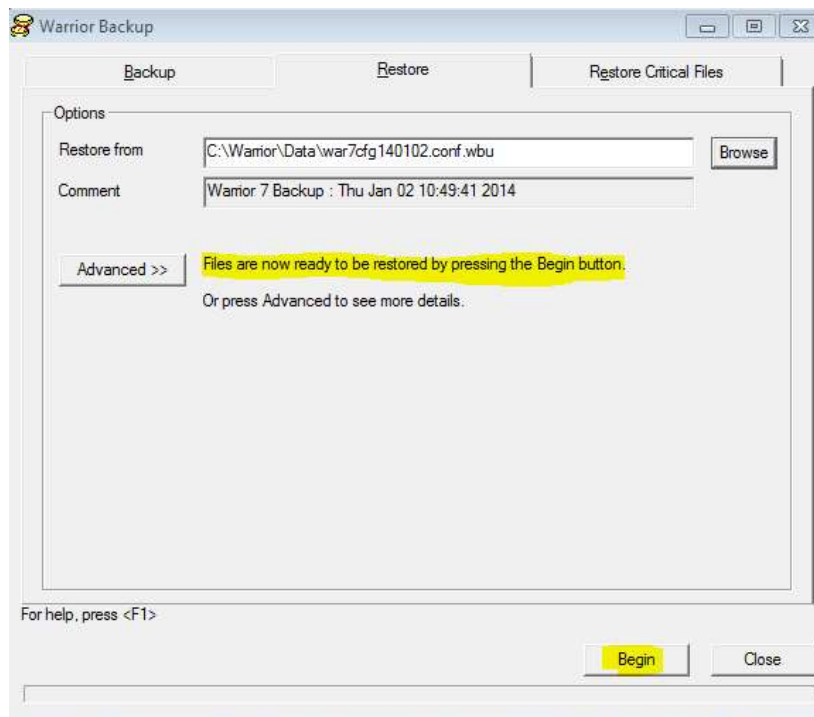


FIG: 24.6 Begin Restore

Once the Examining is complete click on the Begin button. This will cause a pop up asking you if you want to Restore configuration from Warrior 7 , click on yes

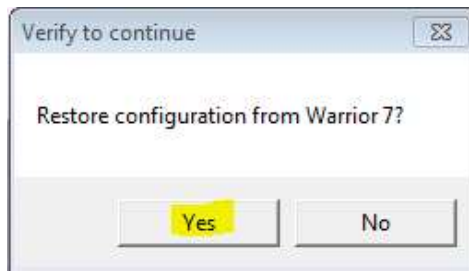


FIG: 24.7 Confirmation Pop Up

This will begin the restoration process that will end with a text status window.

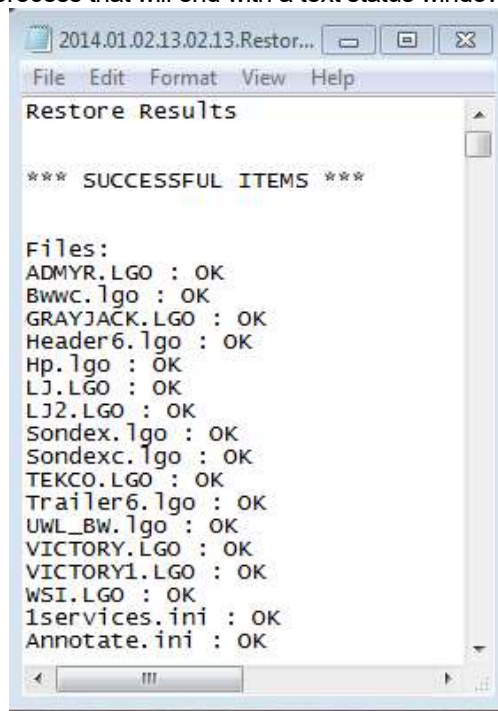


FIG: 24.8 Restore Results

This should complete your restoration, load acquisition and all your services and tools should be present.

24.3 Importing select Services from Warrior 7 Backup

You may wish to only import select services, this can be done from the same Warrior 7 backup for Warrior 8 "wbu" file. Go to Database Utilities and select " Edit Logging Service Details ".



FIG: 24.9 Edit Logging Service Details

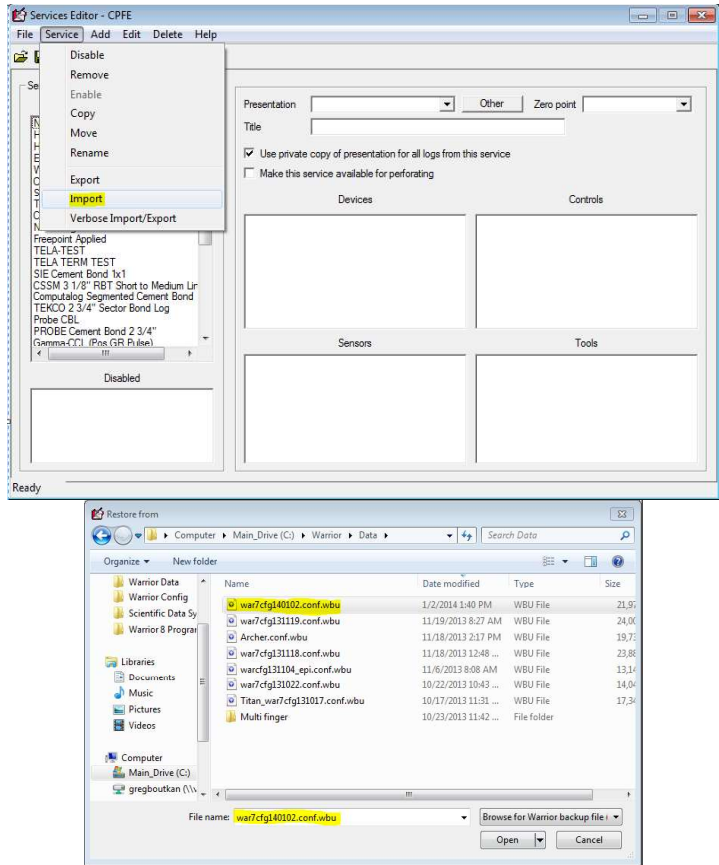


FIG: 24.10 Browse to WBU file

This will open a dialog that will allow you to select one or more services to import, by holding the control key and right clicking with your mouse.

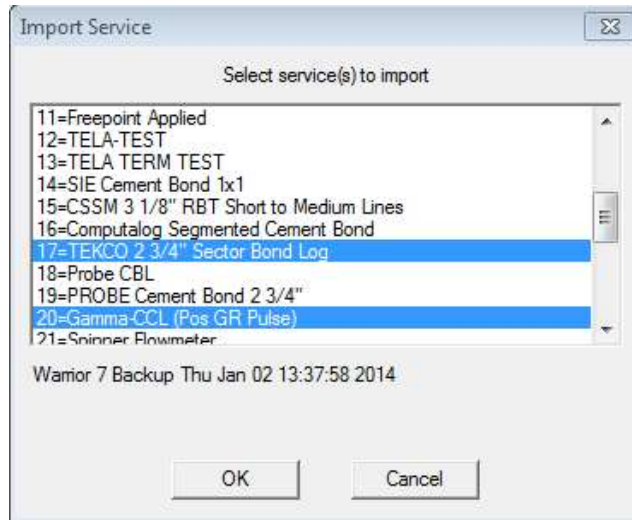


FIG: 24.11 Selecting services

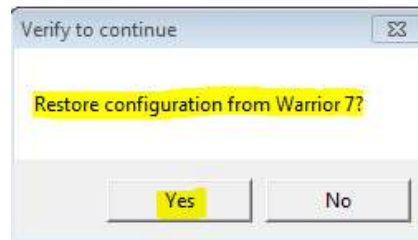


FIG: 24.12 Confirmation Dialog

You will then be prompted to select or de-select specific tool serial numbers.

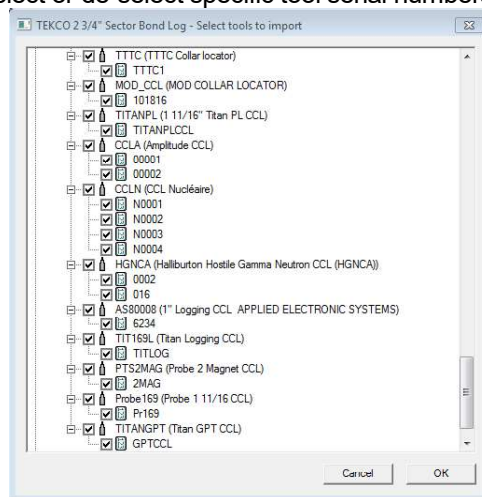


FIG: 24.13 Serial number Selection

At this point the service and selected serial numbers will be imported with a confirmation text window.

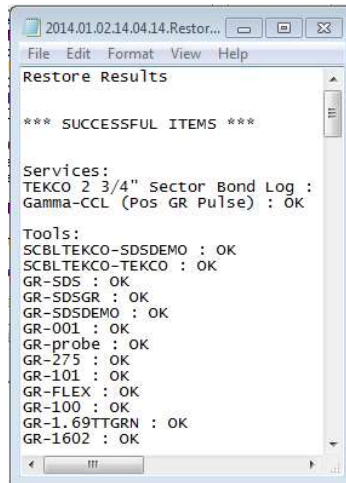


FIG: 24.14 Status Text Box

If the service or any of the serial numbers already exist you will be given a confirmation window to confirm overwriting the existing file.

24.4 Importing select Serial numbers from Warrior 7 Backup

You also have the option of importing specific tool serial; numbers from the Warrior 7 backup for Warrior 8 "wbu" file. Go to Database Utilities and select Edit Logging Tool Details.



FIG: 24.15 Edit Logging Tools Details

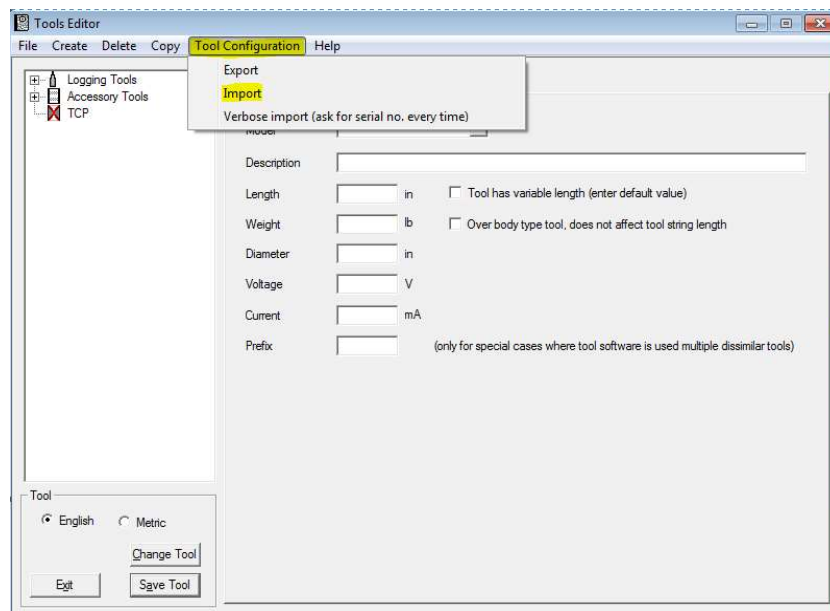


FIG: 24.16 Importing Tool

Select the "Tool Configuration" tab and from the pulldown select Import.

Browse to the Warrior 7 Backup for Warrior 8 "wbu" file and select it. This will bring a a tool import window , here you can select a tool type and specific serial numbers.

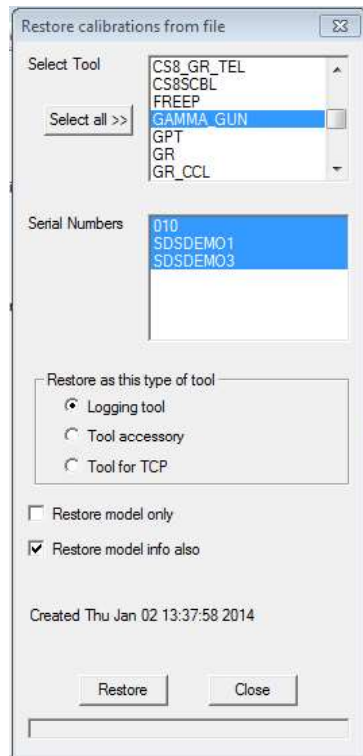


FIG: 24.17 Tool and Serial number selection

Once you have selected the desired Tool and serial numbers click on Restore. This will bring up a confirmation dialog click on OK. If the tool and serial numbers do not exist on the system you will be given a confirmation message in the status window.

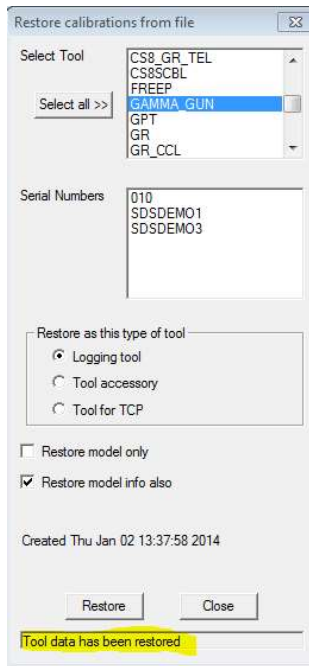


FIG: 24.18 Restore Confirmation

If either the tool or specific serial numbers were already present you will be give an overwrite confirmation for each.

24.5 Identifying a CBL Service

Before using the Warrior 7 Backup for Warrior 8 you should confirm that your Bond services are configured to use SCBL as opposed to CBL instruments. Go to Database Utilities and select Edit Logging Tool Details.



FIG: 24.19 Edit Logging Tool Details

Browse to your Bond tool Serial number, highlight it and click on the software tab. If under Software in this Tool string it has CBL contact Scientific Data System for instruction on the most effective way to convert you service prior to running Warrior 7 Backup for Warrior 8.

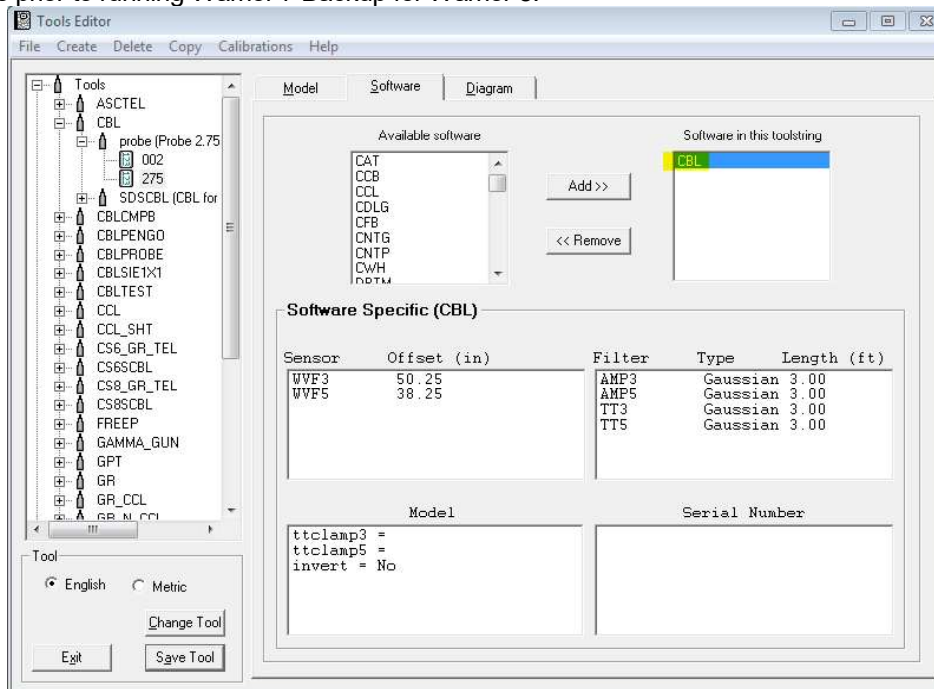


FIG: 24.20 CBL Service