

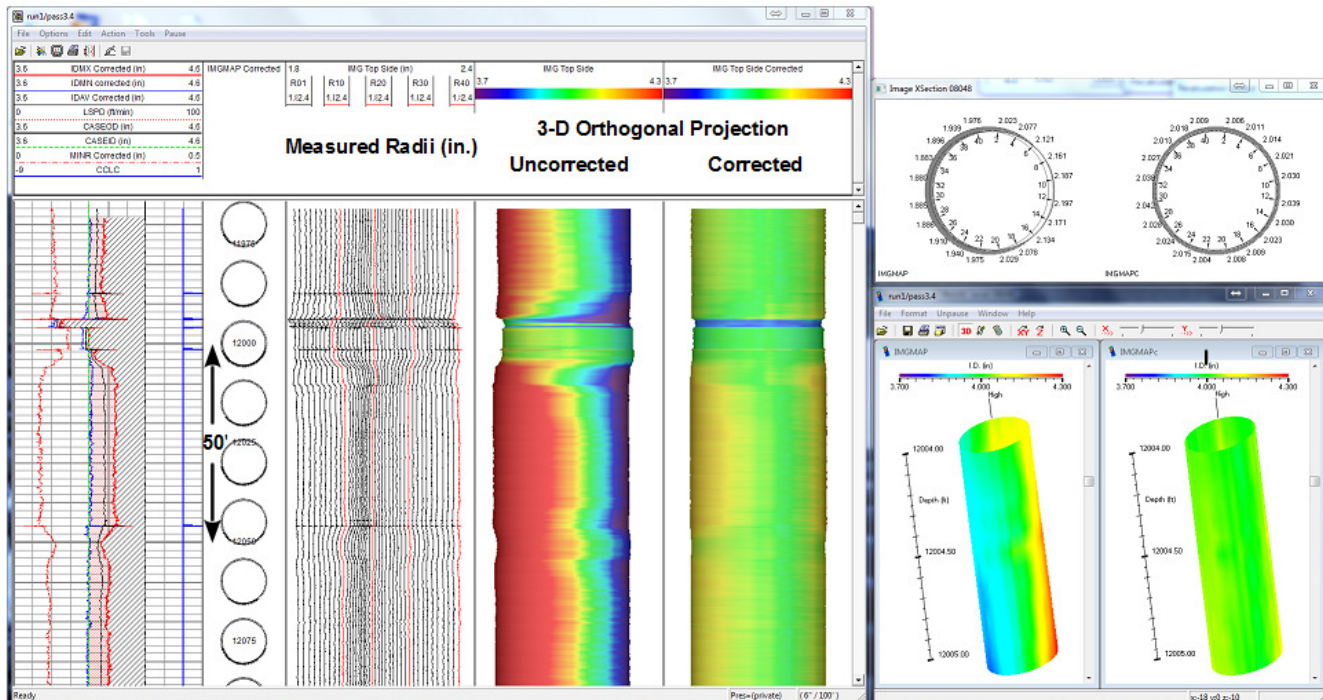
Scientific Data Systems, Inc.

Warrior Caliper Correction Module

Scientific Data Systems has released the first version of the **Caliper Correction Module** for the **Warrior Well Logging System**.

Modern multi-fingered calipers have sufficient resolution to aid in the identification of casing features on the order of thousandths of inches in radial change. Unfortunately, the response to these features as measured by the individual fingers is often overwhelmed by the effect of the tool not being centralized. One tenth of an inch of tool eccentricity can degrade the data to the point of being uninterpretable.

SDS has created a unique solution to this problem with the new **Caliper Correction Module** which automatically corrects the caliper data in real-time and enables quality control while logging. Tool positioning anomalies are removed to reveal the underlying geometries and features that exist within the interior casing wall.



In this example the operator has set up a typical scrolling log display showing raw caliper curves and image displays of the data, corrected and uncorrected for eccentricity. Other windows show displays of the corrected and uncorrected cross-sections.

- Runs real-time while logging and in post-processing mode
- Easy to run – minimal parameter setup
- Assists greatly with log interpretation and quality control
- Client distributable viewer CD/DVD can be generated at the wellsite
- Integrated with Warrior logging system – no format conversions needed
- Works with all multi-fingered caliper tools

An interactive desktop caliper analysis and reporting software package will be available in the near future. Please contact us for more details.

Scientific Data Systems, Inc.

16840 Clay Road, Suite 105, Houston TX 77084, U.S.A.

Tel: 281 550 1109 Fax: 281 550 2068 E-mail: sds.info@warriorsystem.com

www.warriorsystem.com

Brands, product names, and other names are trademarks of their respective organizations.