

Section 22

22 Convert from 6.2 to 7.0 Warrior

Goto Warrior system with 6.2 version, open Warrior and copy the 6.2 bin file unto a blank CD
Put CD in the cd driver of the computer that will be upgraded.
Copy the 6.2 bin file unto the desktop.



FIG: 22.1 Bin

22.1 Procedure

- Place the 6.2 Bin file on the desktop...
- Open My Computer\C:\Warrior folder
- Open the 6.2 Bin file that you placed on the desktop.
- Copy all of the ".wtd" files from the 6.2 bin folder to Warrior \ Format folder
- Copy all of the ".was" files from the 6.2 bin folder to Warrior \ 7.0 bin32 folder
- Copy all of the ".hdg" files from 6.2 Bin folder to Warrior \ Format Folder
- Copy all of the ".prs" files from 6.2 Bin folder to Warrior \ Format Folder
- Copy the Company logo file from 6.2 Bin to Warrior \ Config Folder
- Close all windows

22.2 Import a Tool

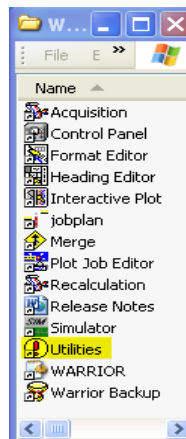


FIG: 22.2 Utilities

Open the 7.0 Warrior Utilities program.



FIG: 22.3 Edit Logging Tool Details

Open "Edit Logging Tool Details."

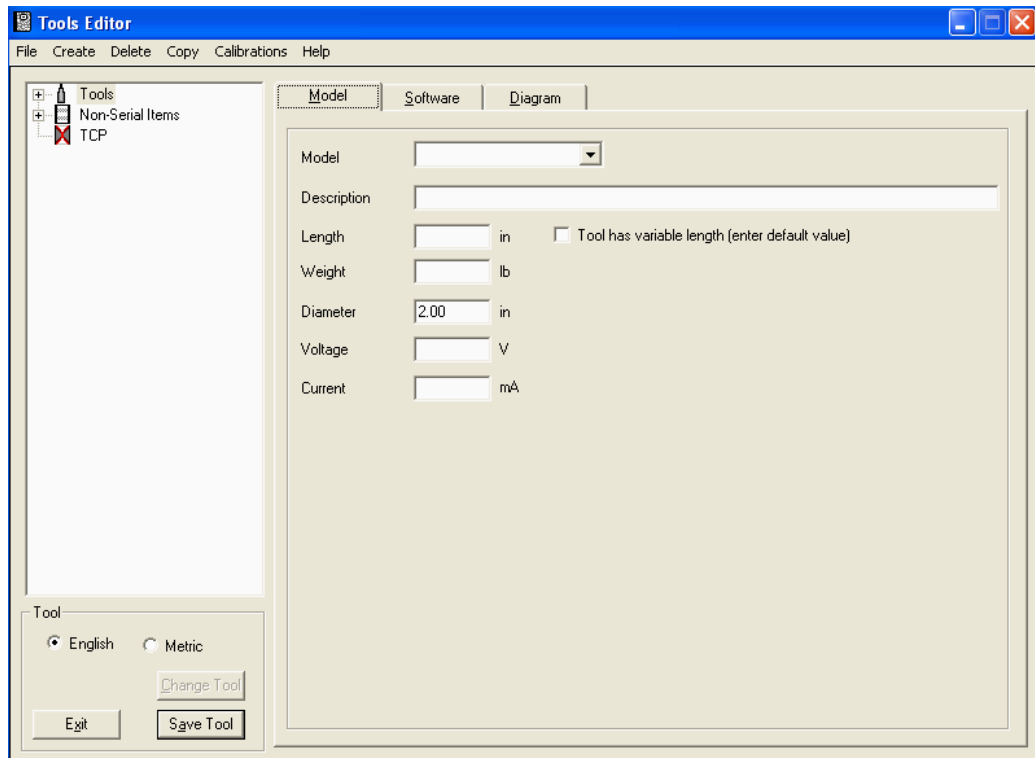


FIG: 22.4 Tools Editor

Highlight "Tools"

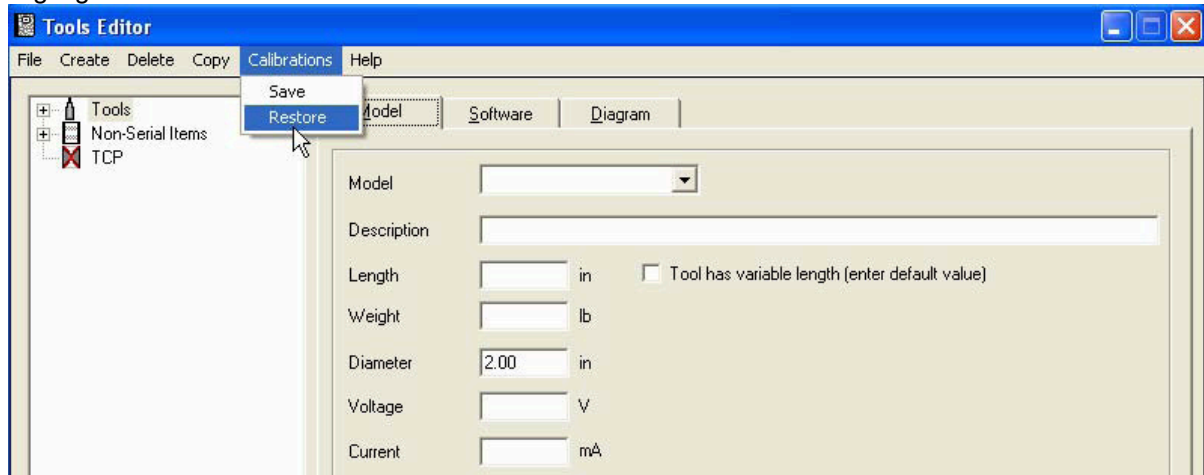


FIG: 22.5 Tools Restore

From the tools menu, select Calibrations --> Restore.

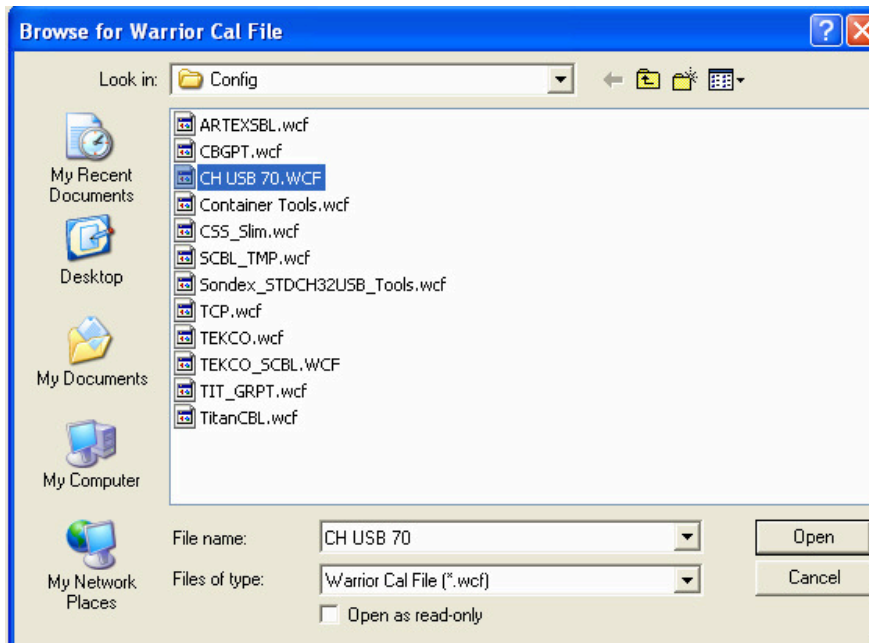


FIG: 22.6 Browse Cal File

In the box marked "Filename", change the .wcf to "*" and press enter.

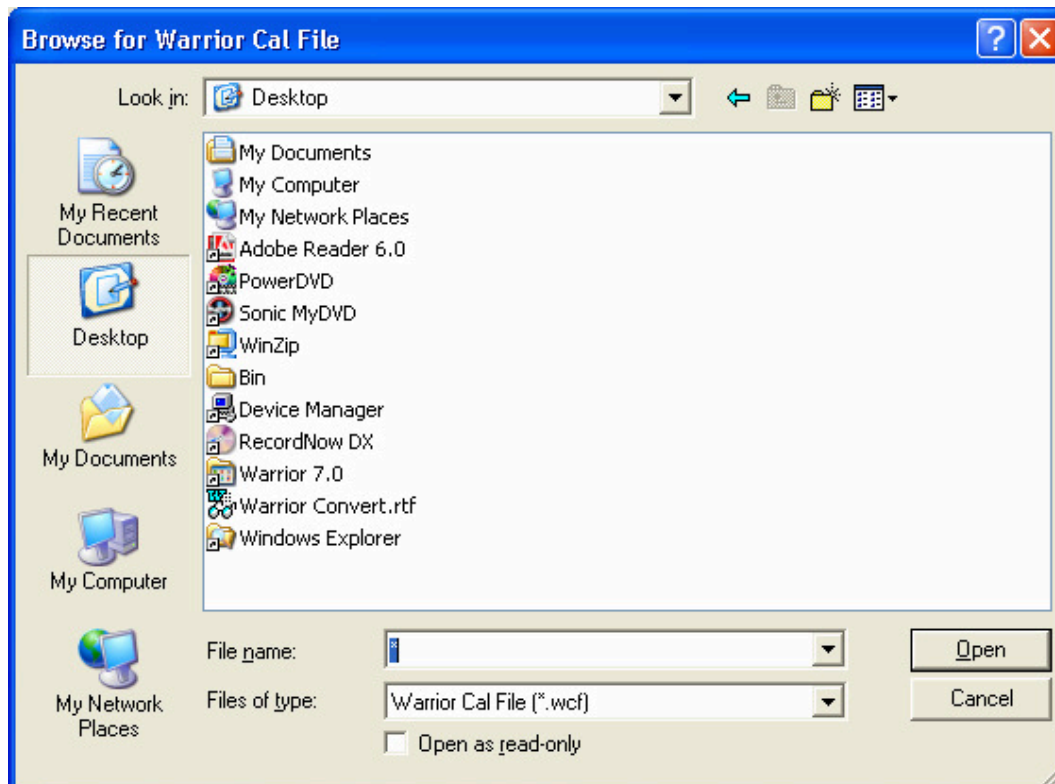


FIG: 22.7 Browse Cal File 6.2

Click on the Desktop icon to the left side of the window.
 Double click on the 6.2 Bin folder.
 Highlight "Tools.ini" file.

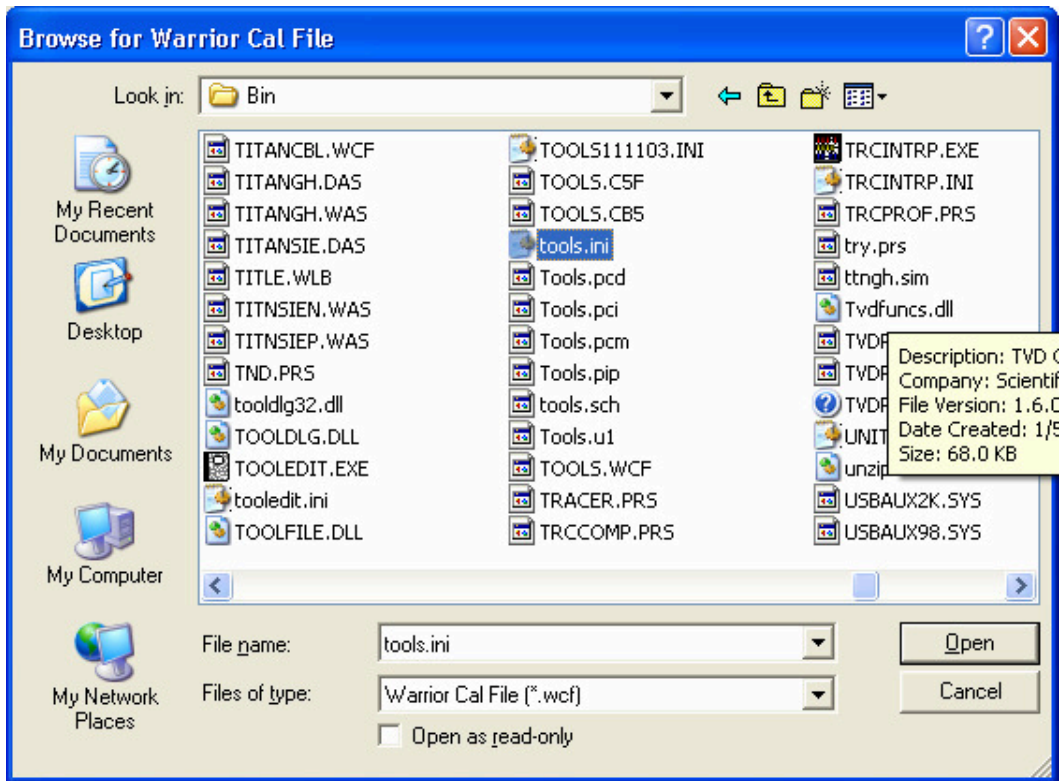


FIG: 22.8 Browse Cal File 6.2

Click on Open.

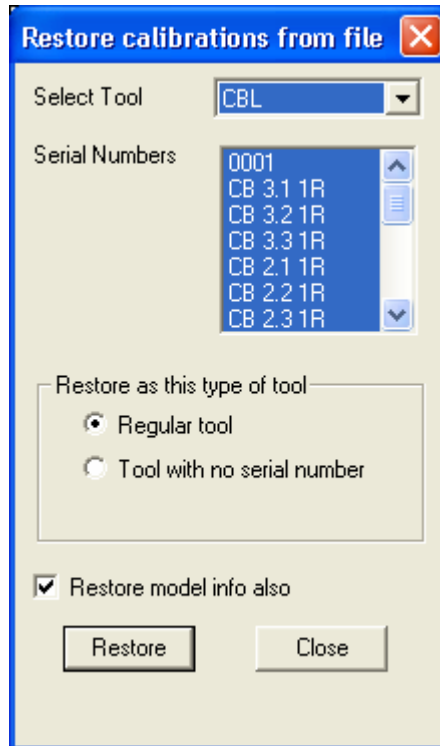


FIG: 22.9 Tools Restore

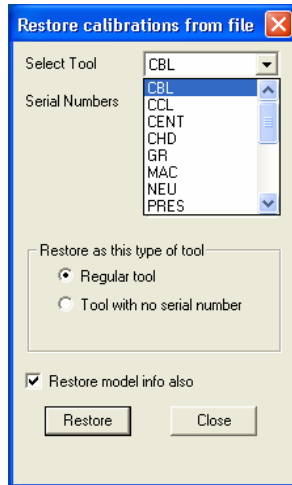


FIG: 22.10 Select Tools

From the Select Tool drop down menu, choose the tool type to be imported. Highlight all of the tools under the tool type that you wish to import into 7.0

NOTE: There are several categories of tools that can be selected. Click on the "Restore" button.

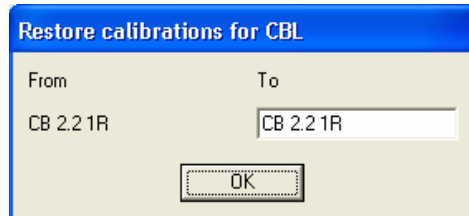


FIG: 22.11 Restore Calibrations

At this point, you can give the tool a different name if you are concerned about over writing original tool information. If you do not wish to rename the tool, click on OK.

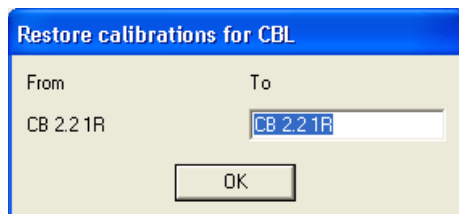


FIG: 22.12 Restore Calibrations

If you wish to rename the tool, highlight the name in the "To" box and then type in the name you desire.

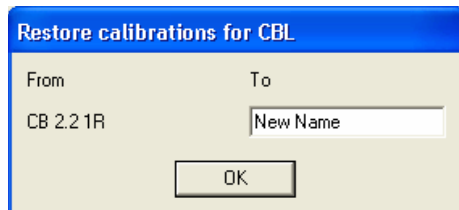


FIG: 22.13 Restore Calibrations

Click on OK. The tool will be imported under the new name.

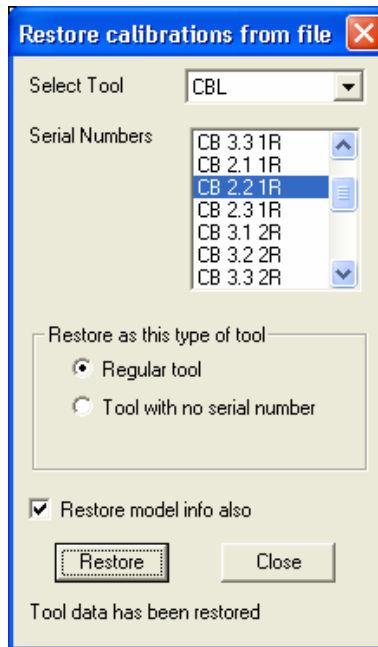


FIG: 22.11 Restore Calibrations

Close the restore window.

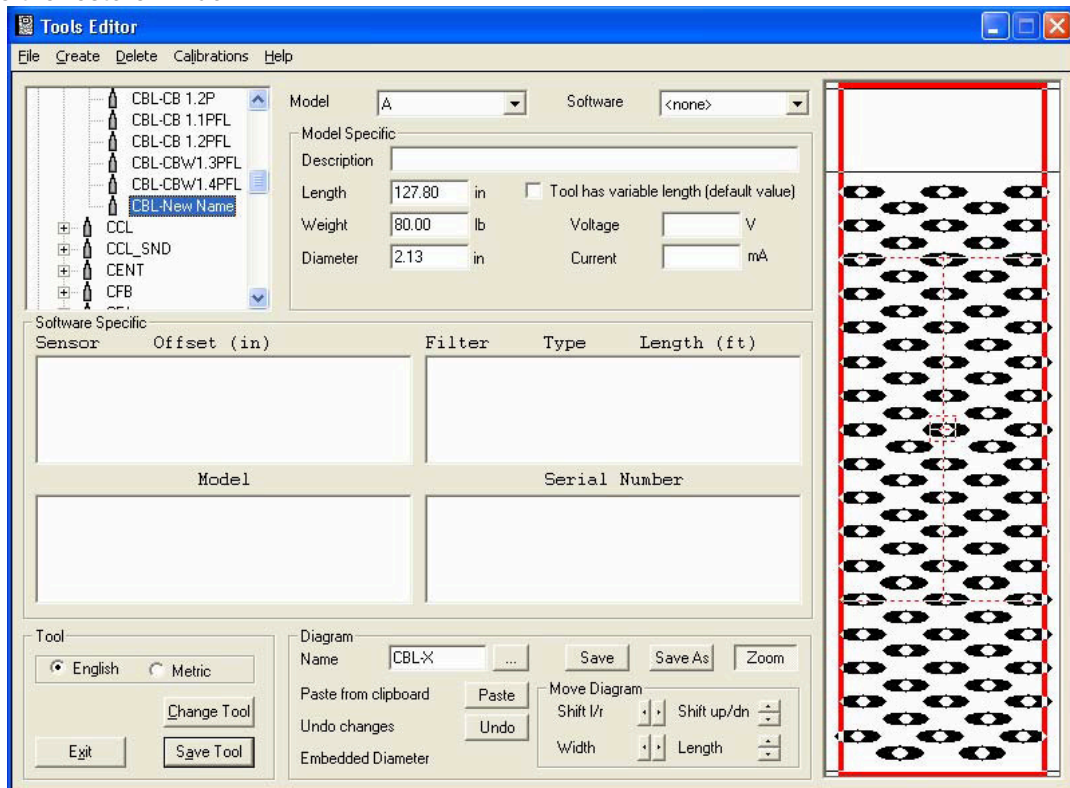


FIG: 22.12 Tool editor

You can now find your new tool in the list.
 Repeat this for each tool category.
 All tools are now available.
 Close Tools Editor window.

22.3 Import a Service



FIG: 22.13 Edit Logging details

In the 7.0 Warrior Utilities window, click on Edit Logging Service Details.

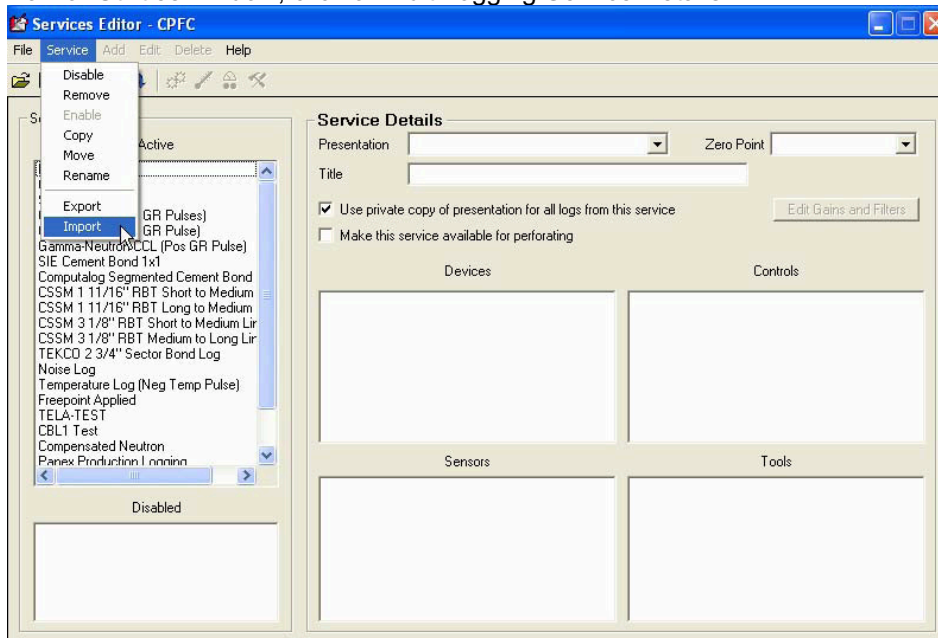


FIG: 22.14 Import service

From the tool menu, select Service --> Import

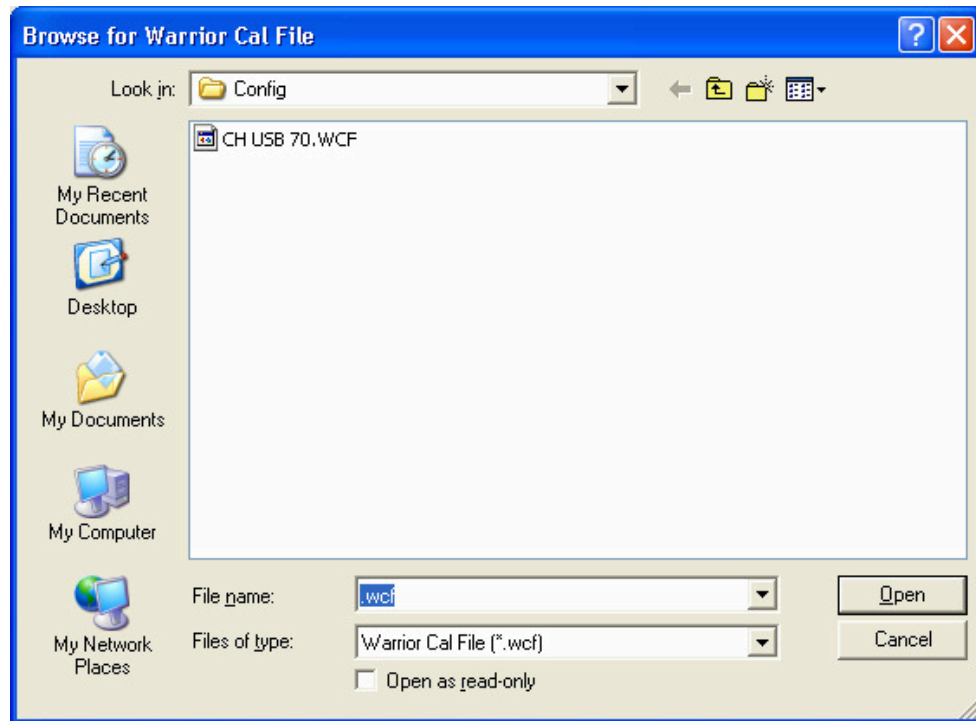


FIG: 22.16 Browse Cal File

In the box marked "FileName", change the .wcf to "*" and press enter.

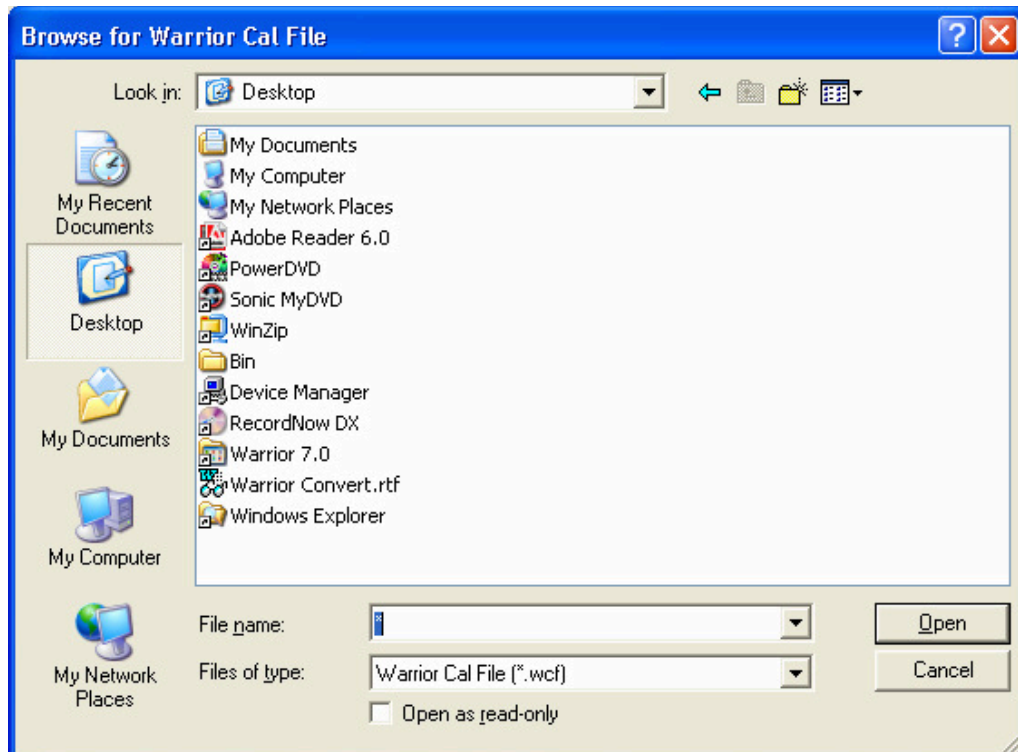


FIG: 22.17 Warrior Cal File versions 6.2

Click on the Desktop icon to the left side of the window.

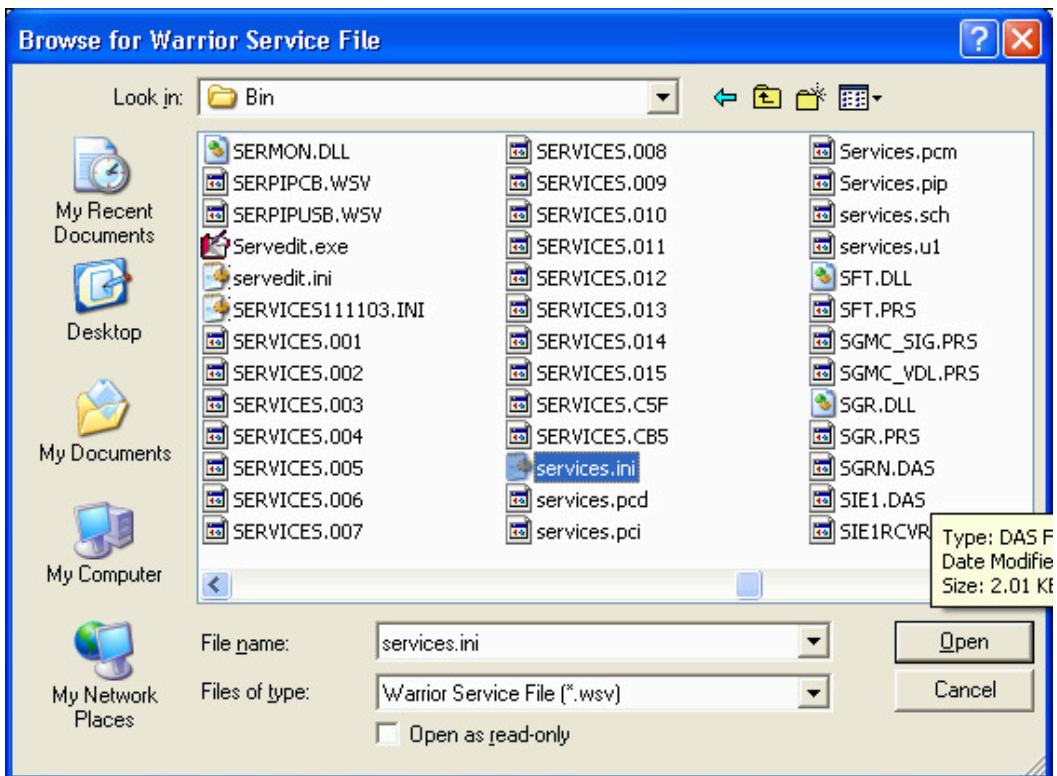


FIG: 22.18 Services.ini versions 6.2

Click on services.ini, click enter

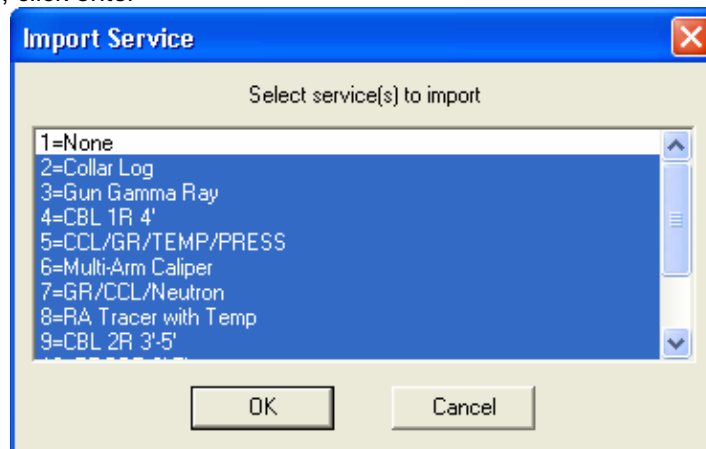


FIG: 22.19 Select services

Highlight all services to be imported and click ok

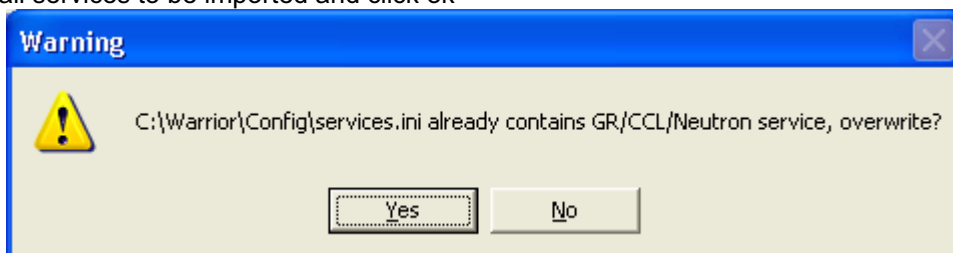


FIG: 22.20 Overwrite Select service

If there is a service with the same name, the program will ask if it should be over written. Keep in mind that any changes you have made to the original service (the one being over written) will be lost to import the service, click on OK.

If you do not want to loose the changes, click no. Follow the procedure to rename the original service below, and then return to "Import Service" procedure.

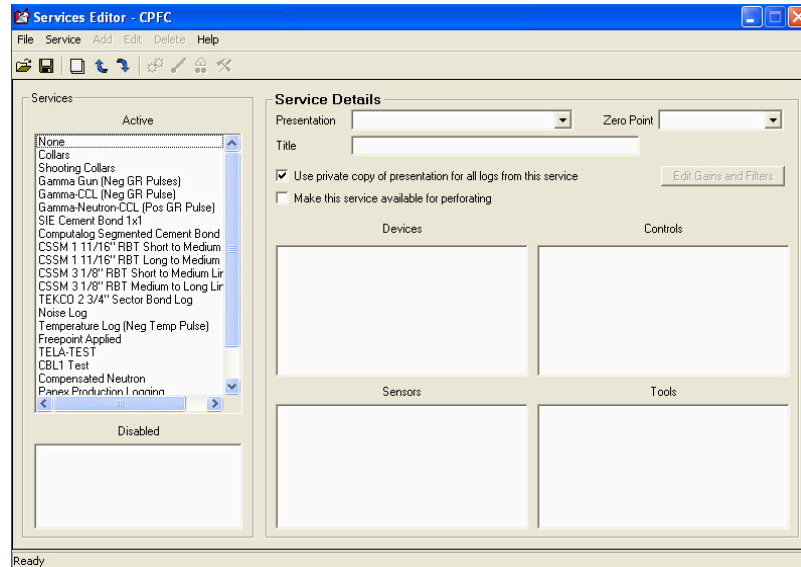


FIG: 22.21 Service Editor

All service that was selected has now been imported. You must now convert the imported services from 6.2 to 7.0

Close all windows.

22.4 Convert Services

Open My Computer\C:\Warrior folder

Open bin32 folder.

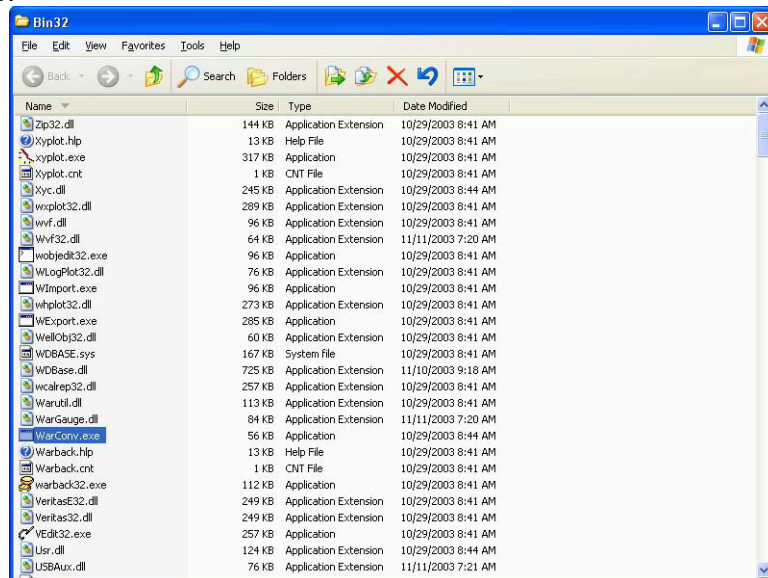


FIG: 22.22 WarConv.exe

Double click on warconv.exe

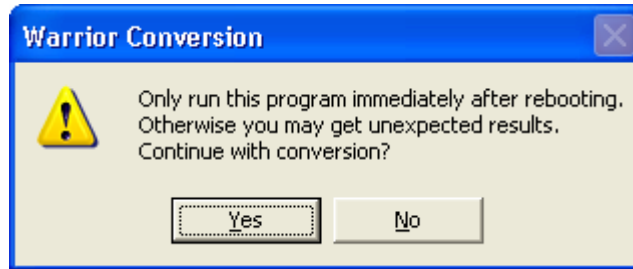


FIG: 22.23 Run WarConv.exe

Click on yes

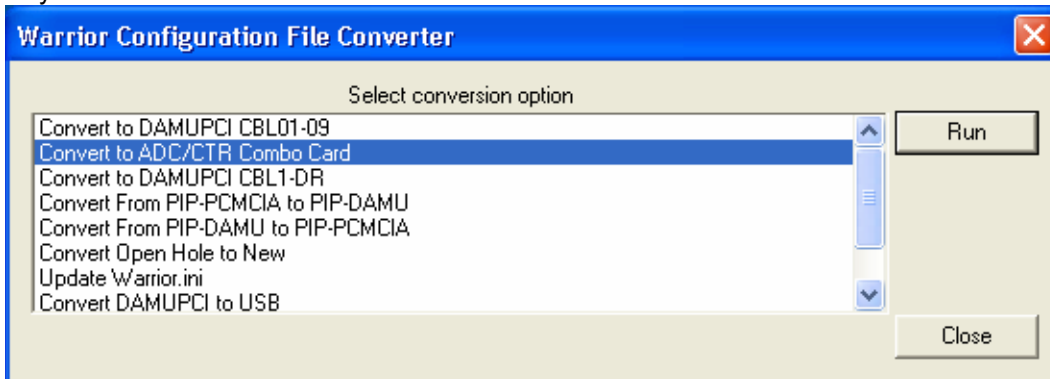


FIG: 22.24 Select Configuration File Converters

Highlight Convert to ADC/CTR Combo card then click Run.

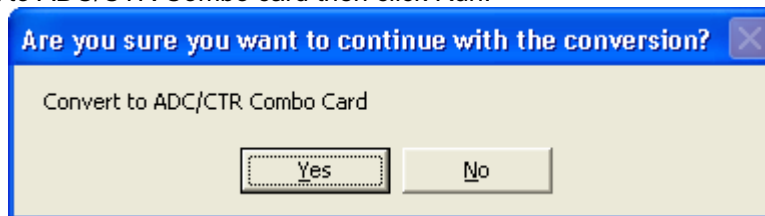


FIG: 22.25 Convert to ADC/CTR Combo Card

Click on Yes.

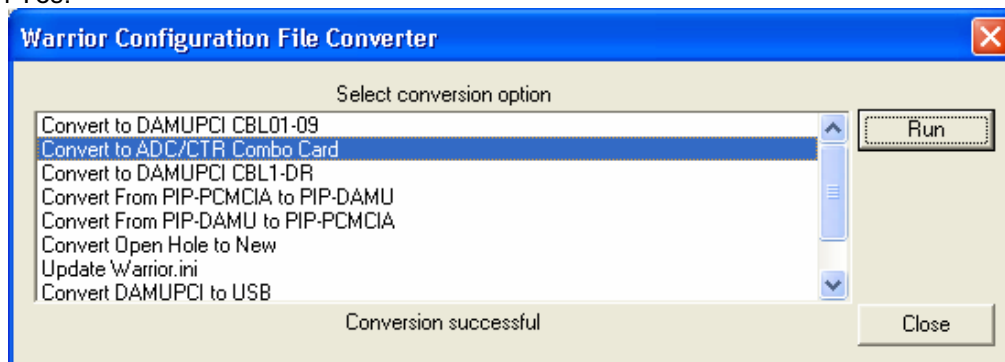


FIG: 22.26 Select Configuration File Converter

You will see "Conversion Successful" when the conversion is finished.

Restart your computer.

Again, open My Computer\C:\Warrior folder

Open bin32 folder.

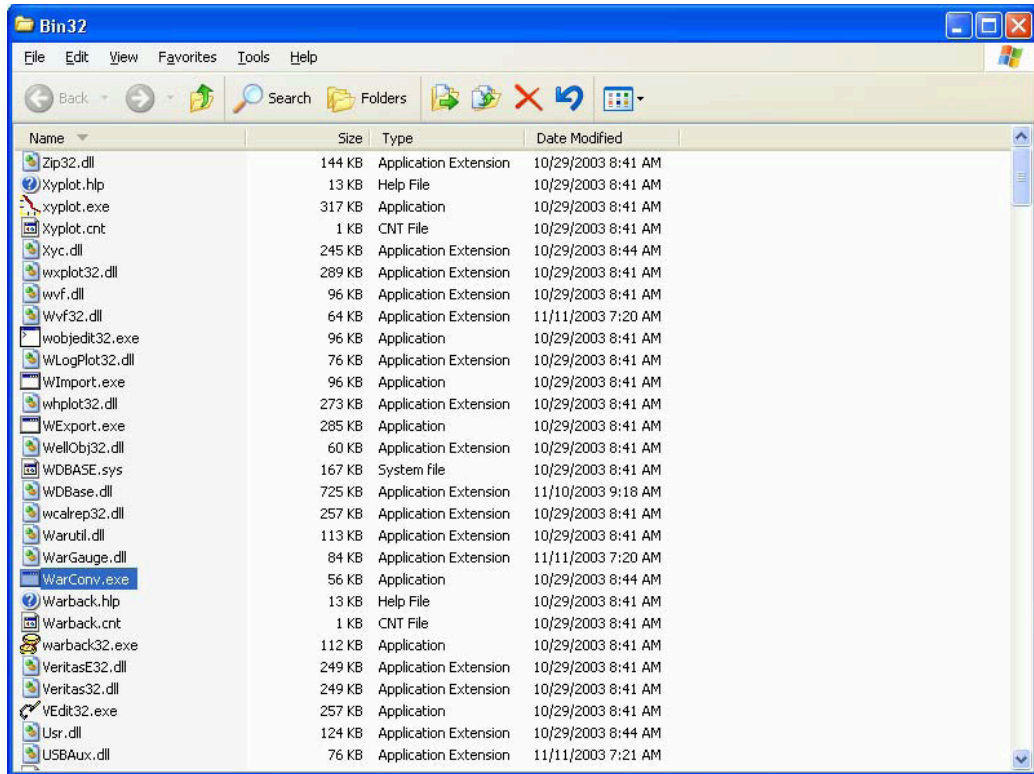


FIG: 22.27 WarConv.exe

Double click on warconv.exe

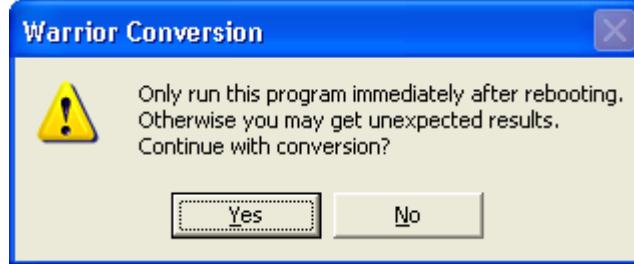


FIG: 22.28 Run WarConv.ex

Click on yes

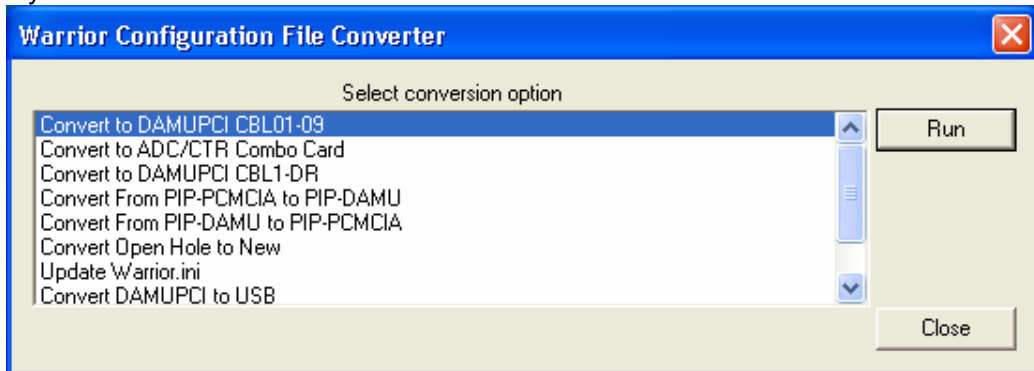


FIG: 22.29Warrior configuration File converter

Highlight Convert to DAMUPCI CBL01-09 then click on Run.

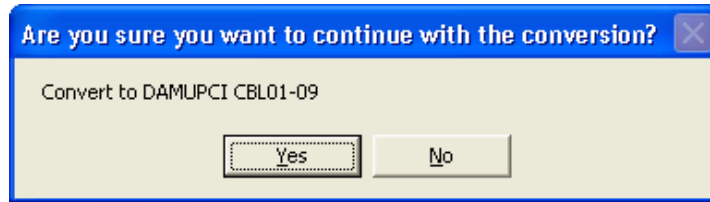


FIG: 22.30 Convert

Click on Yes.

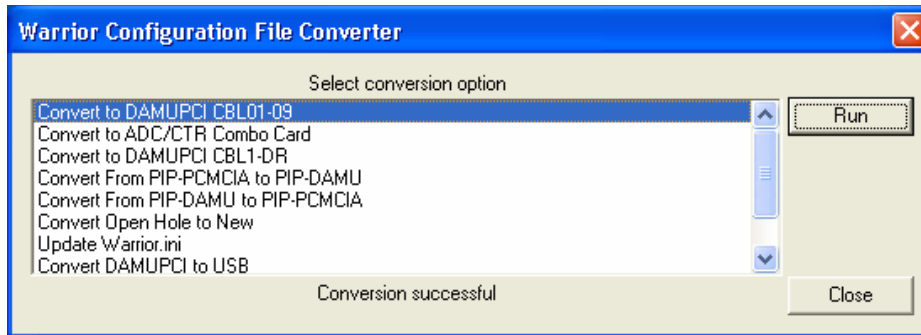


FIG: 22.31 Warrior Configuration File Converter

You will see "Conversion Successful" when the conversion is finished.

Restart your computer.

Again, open My Computer\C:\Warrior folder

Open bin32 folder.

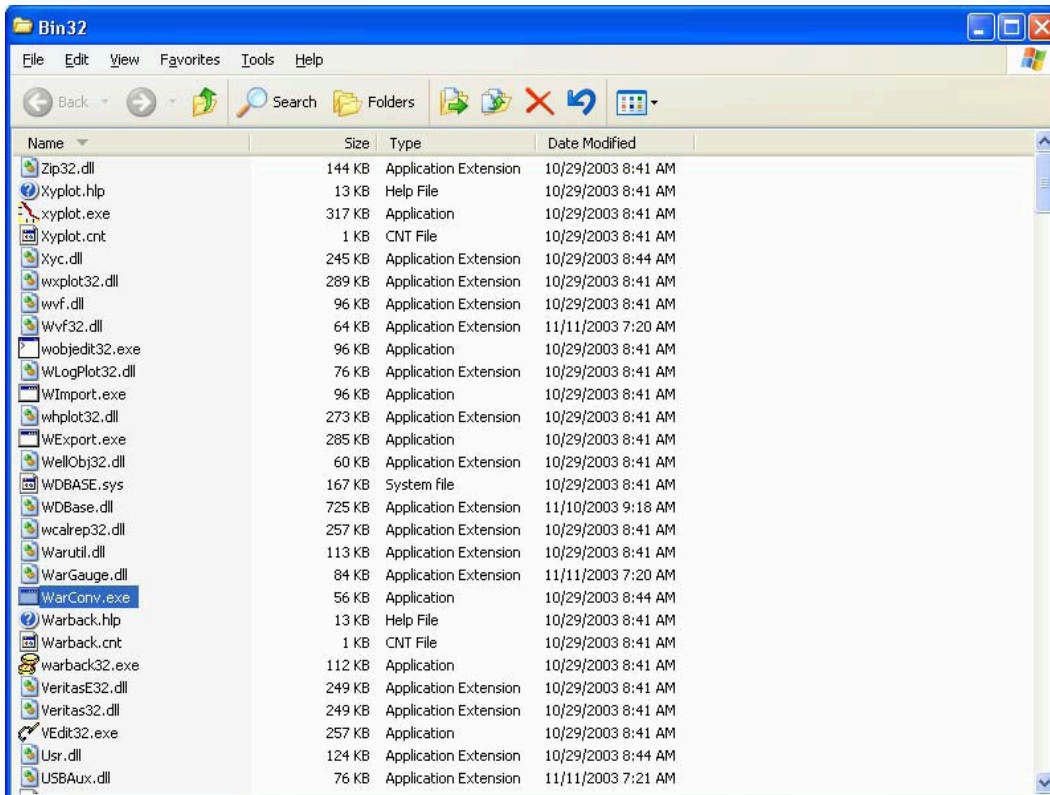


FIG: 22.32 WarConv.exe

Double click on warconv.exe

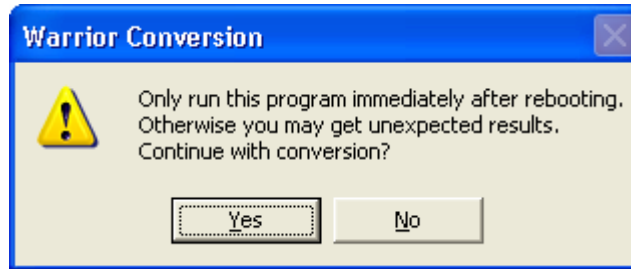


FIG: 22.33 Run Conversion

Click on yes

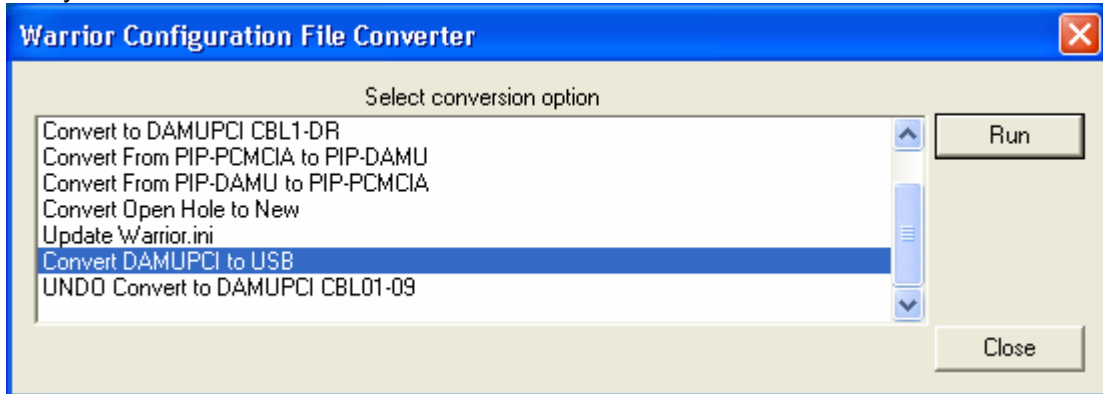


FIG: 22.34 Warrior Configuration File Converter

Highlight Convert DAMUPCI to USB then click on Run.

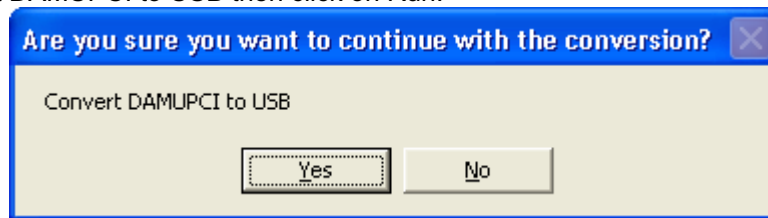


FIG: 22.35 Convert

Click on Yes.

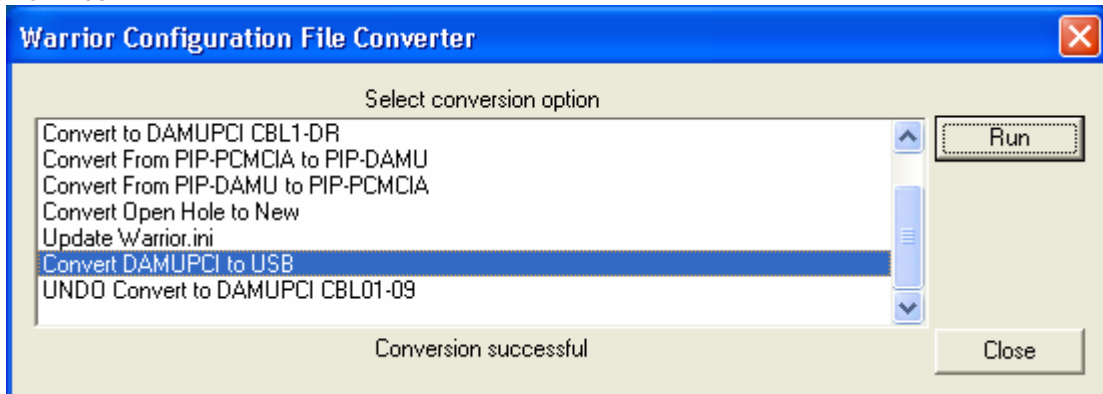


FIG: 22.36 Warrior Configuration File Converter

You will see "Conversion Successful" when the conversion is finished. Restart your computer.

This ends the conversion process.

22.5 Rename Original Service

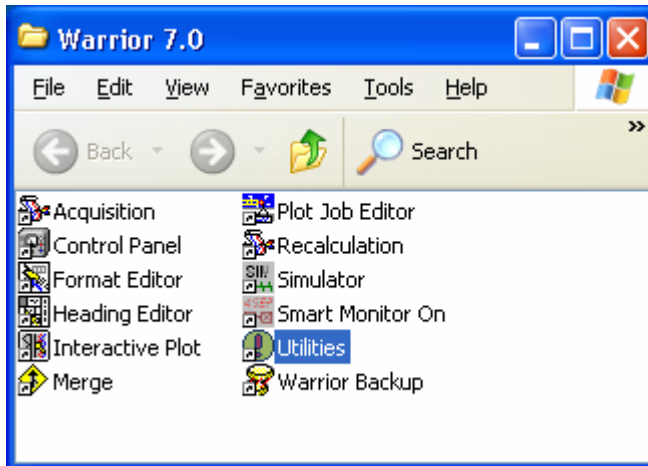


FIG: 22.37 Warrior Utilities

Open Utilities by clicking on the Utilities icon.



FIG: 22.38 Edit Logging details

Click on Edit Logging Service Details.

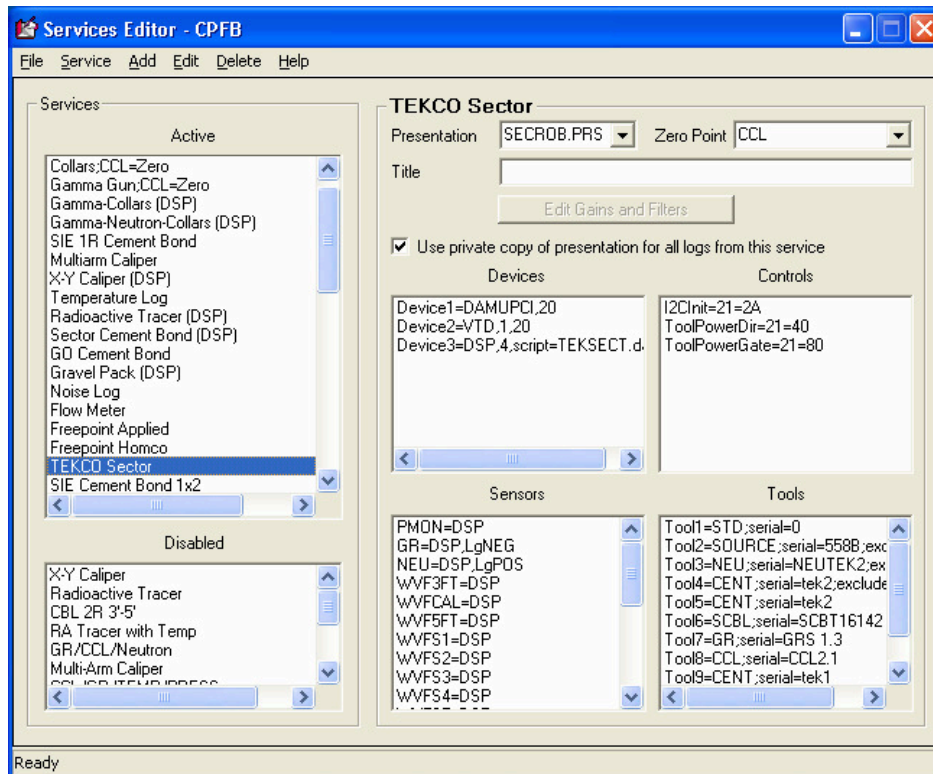


FIG: 22.39 Edit Logging details

Highlight the service to be renamed. In this example, TECKO Sector is highlighted.

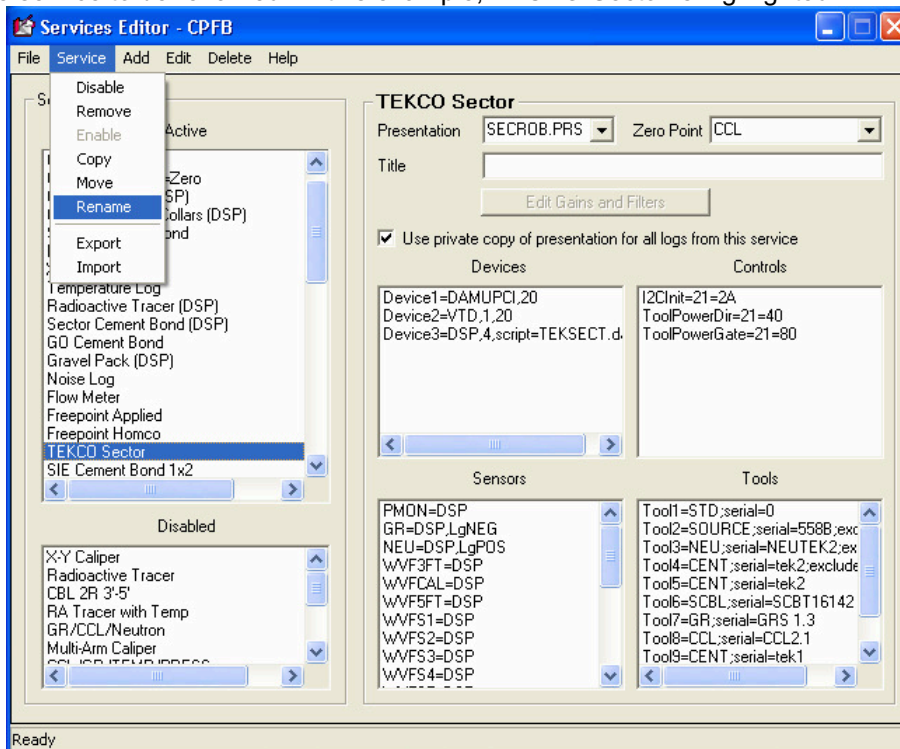


FIG: 22.40 Rename

From the drop down menu, select Service -> Rename.

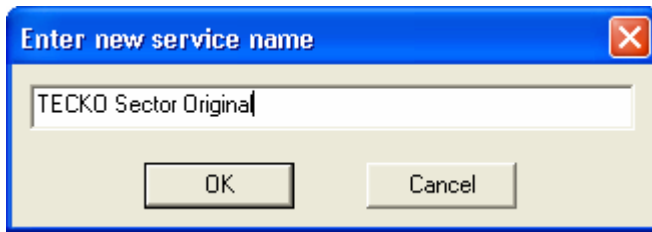


FIG: 22.41 New Service name

Type in the new name for the service and click on OK.

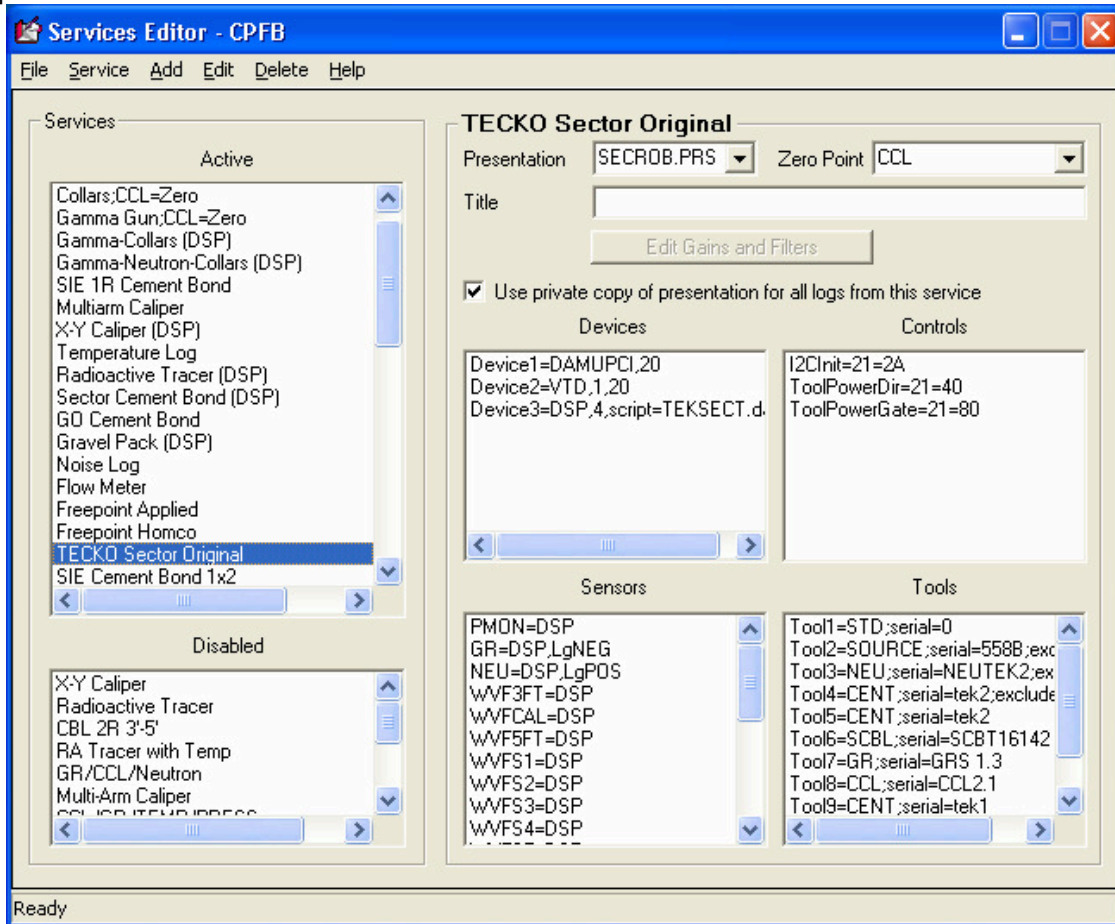


FIG: 22.42 Service Editor

The service now has new name.
This ends the renaming process.