

SCIENTIFIC DATA SYSTEMS, INC.

PPAA Panel Connection Quick Reference

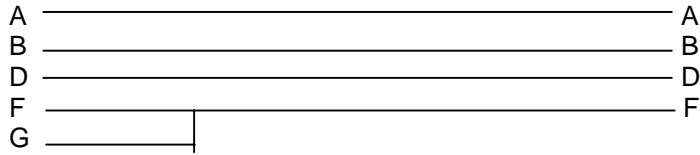
Panels Connection Quick Reference

Pin Out Connectors

DEPTH CABLE

Depth Panel 7 Pin Female

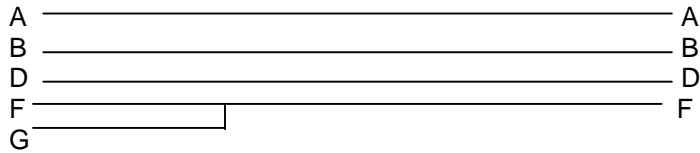
Interface Panel 7 Pin Male



ENCODER CABLE

7 Pin Male

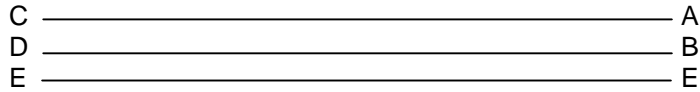
Depth Encoder 7 Pin Female



TENSION CABLE

Depth Panel 5 Pin Female

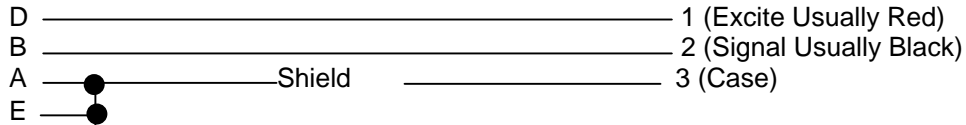
Interface Panel 5 Pin Male



TENSION TRANSDUCER CABLE (XPRO-HONEYWELL PRESSURE TRANSMITER)

5 Pin Male

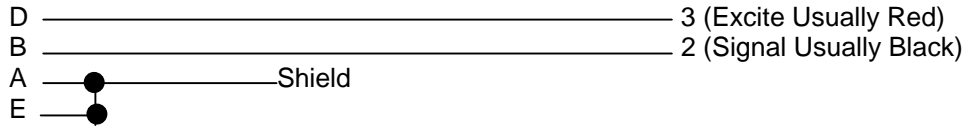
Pressure Transducer



TENSION TRANSDUCER CABLE (ASCO PRESSURE TRANSMITER)

5 Pin Male

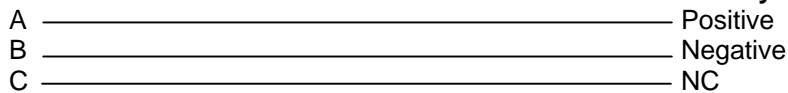
Pressure Transducer



DC CABLE 12V DC

3 or 2 Pin Male

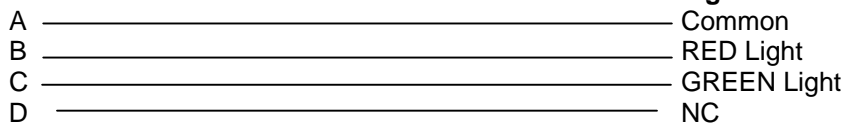
Battery Truck (12 VDC)

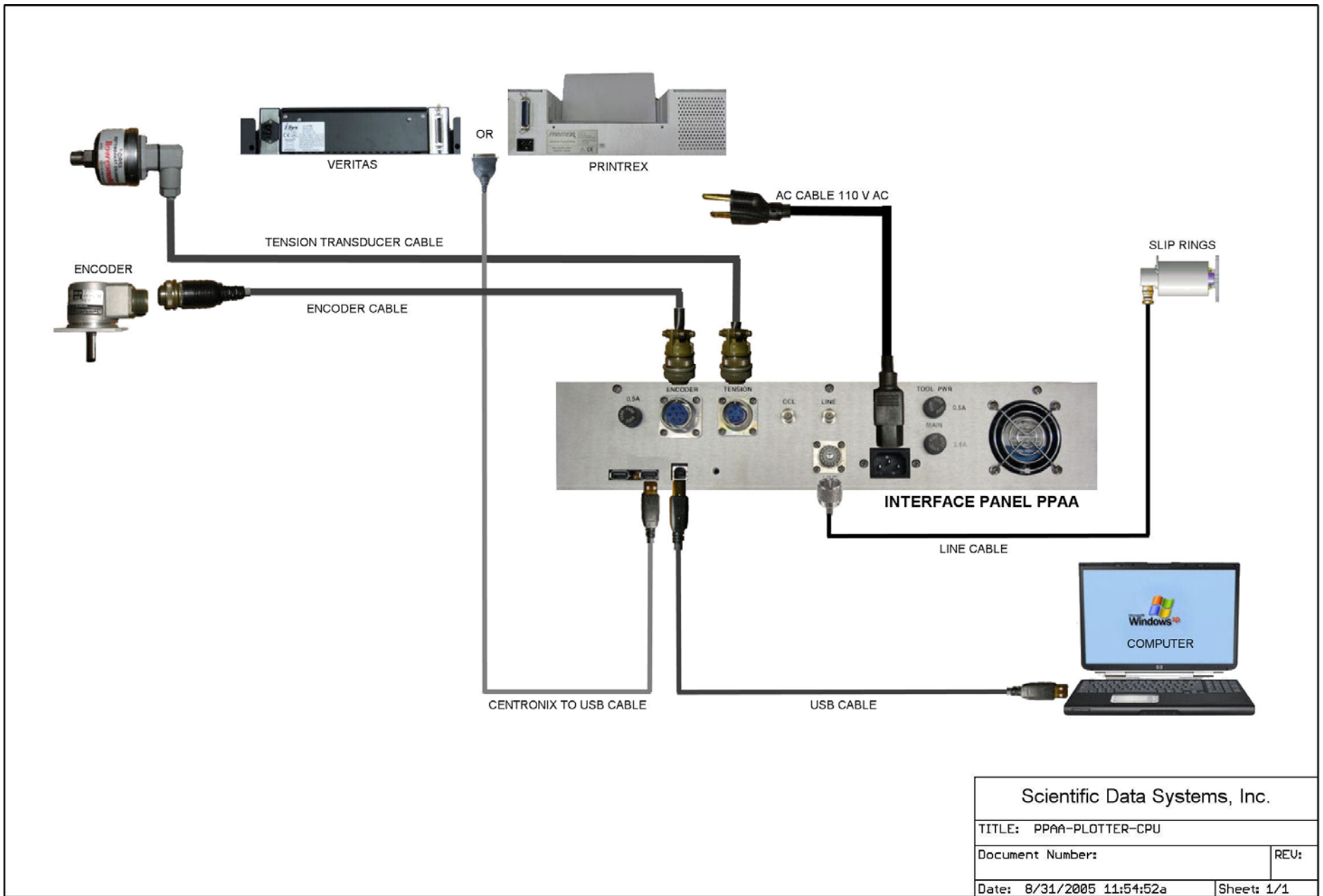


LIGHTS CABLE

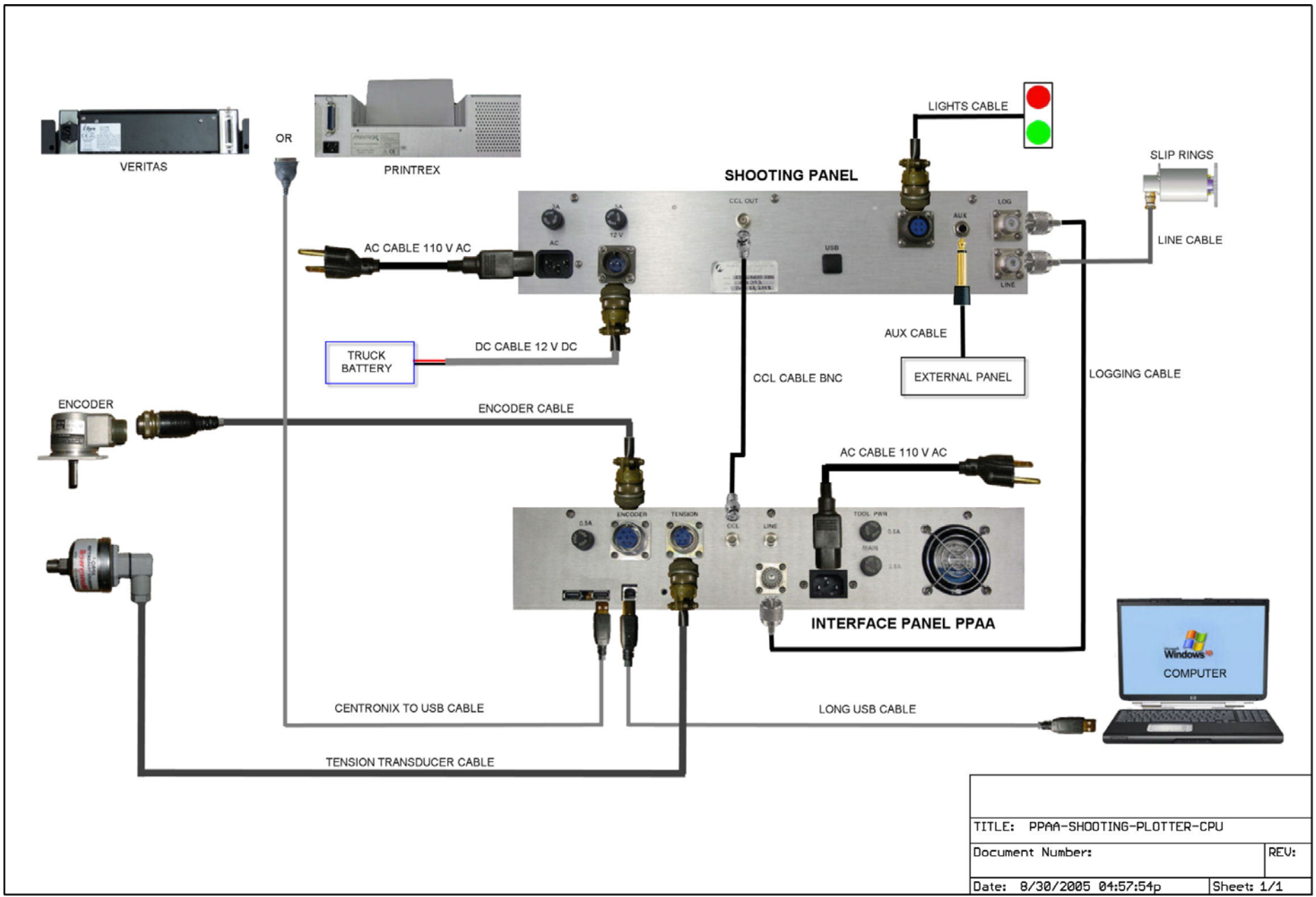
4 Pin Male

Lights

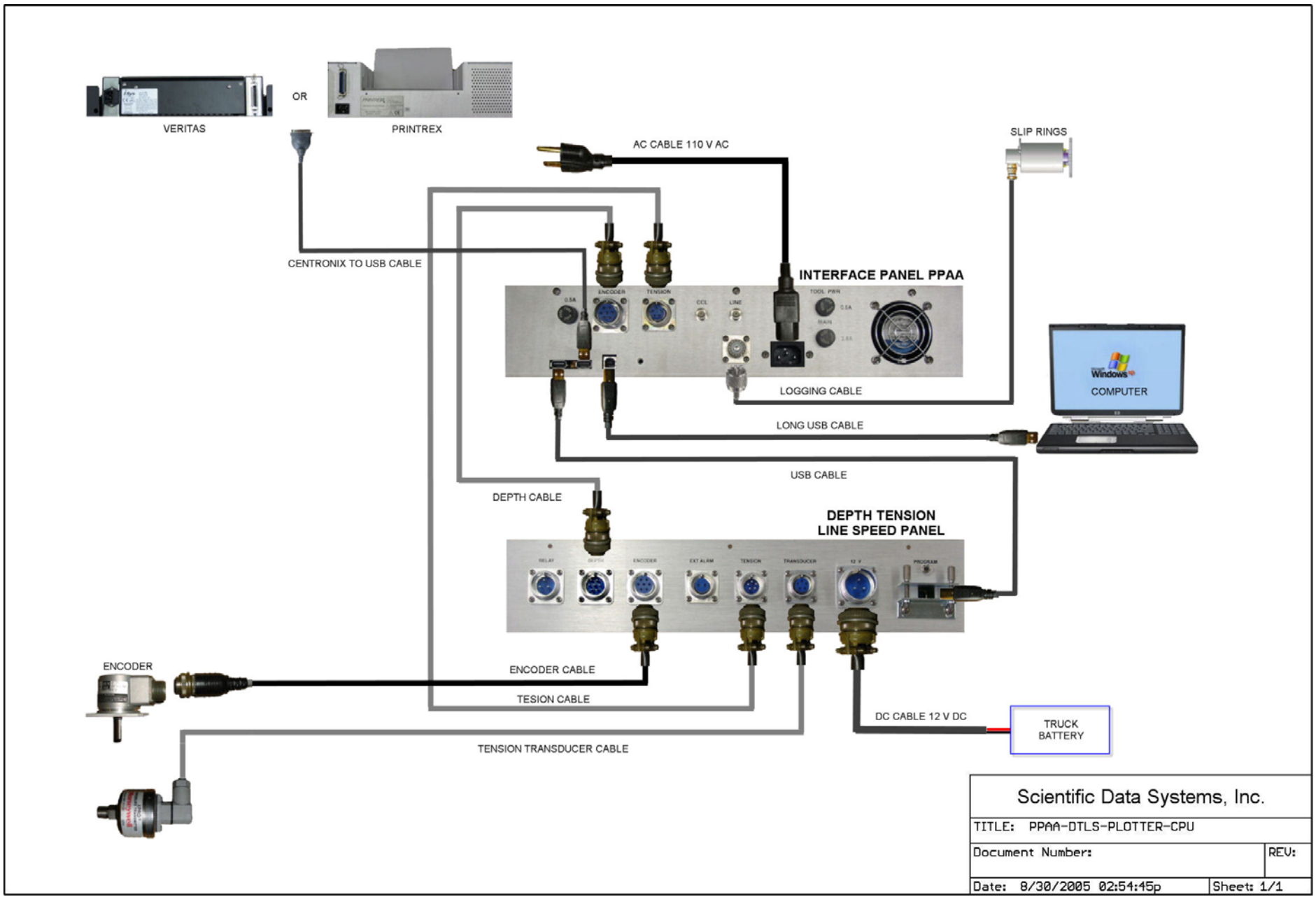




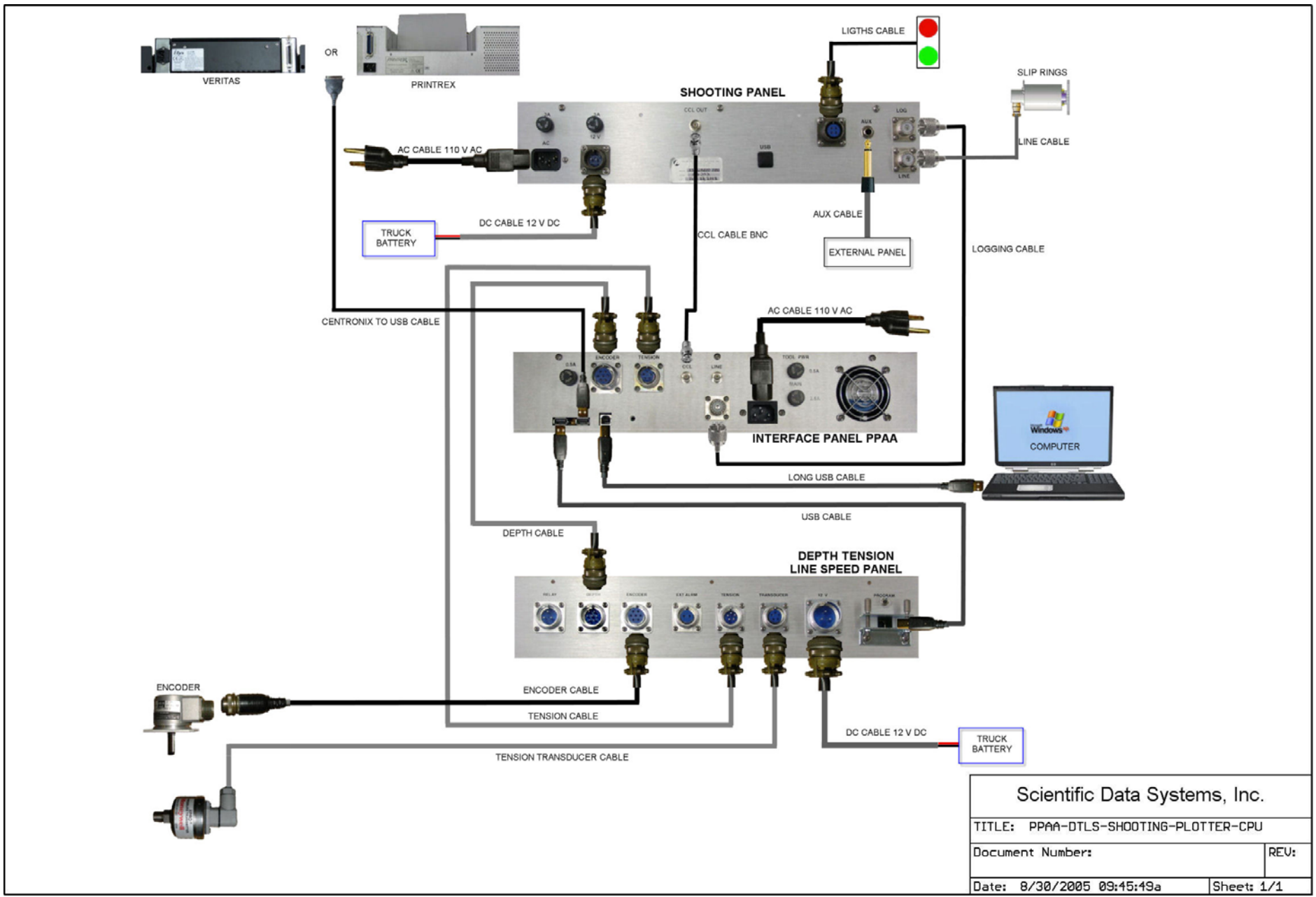
Scientific Data Systems, Inc.	
TITLE: PPA-PLOTTER-CPU	
Document Number:	REV:
Date: 8/31/2005 11:54:52a	Sheet: 1/1

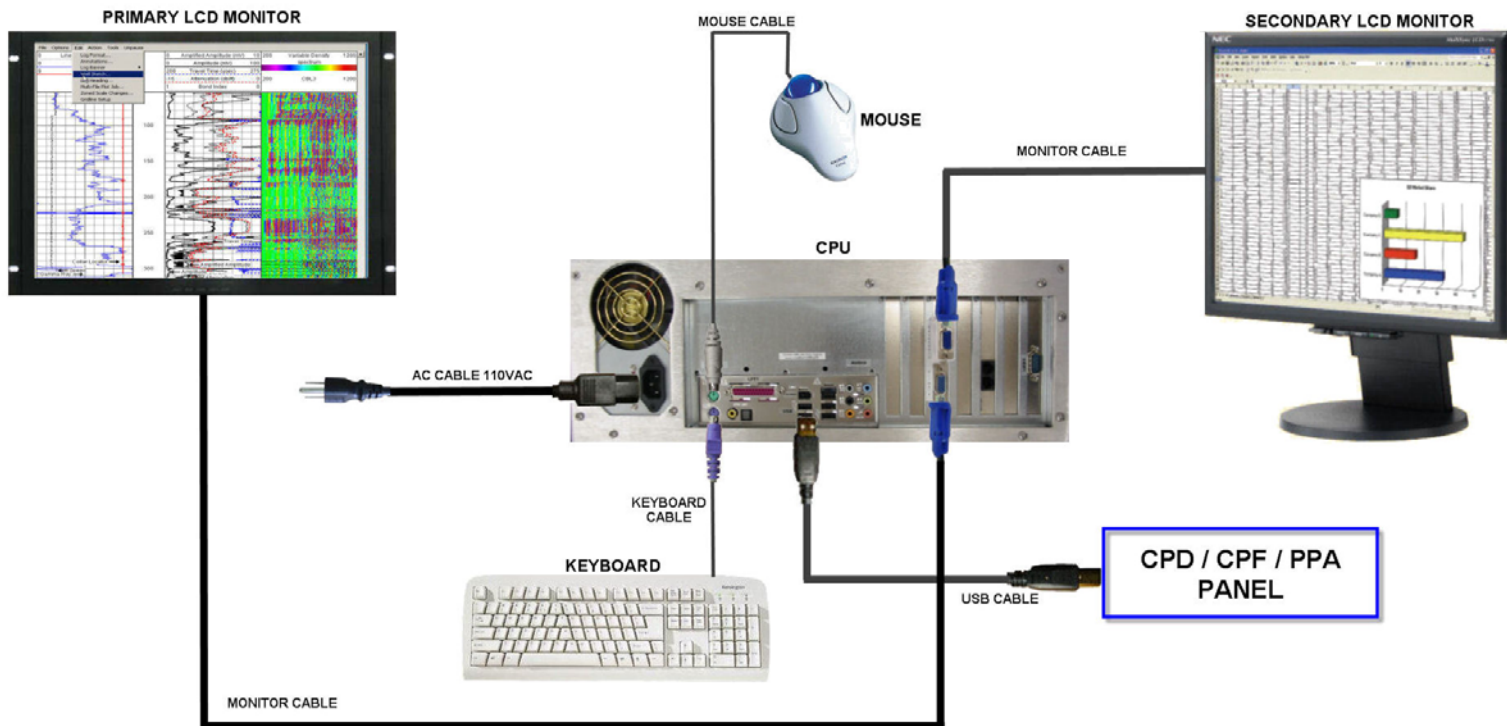


TITLE: PPA- SHOOTING- PLOTTER- CPU	
Document Number:	REV:
Date: 8/30/2005 04:57:54p	Sheet: 1/1



Scientific Data Systems, Inc.	
TITLE: PPA-DTLS-PLOTTER-CPU	
Document Number:	REV:
Date: 8/30/2005 02:54:45p	Sheet: 1/1





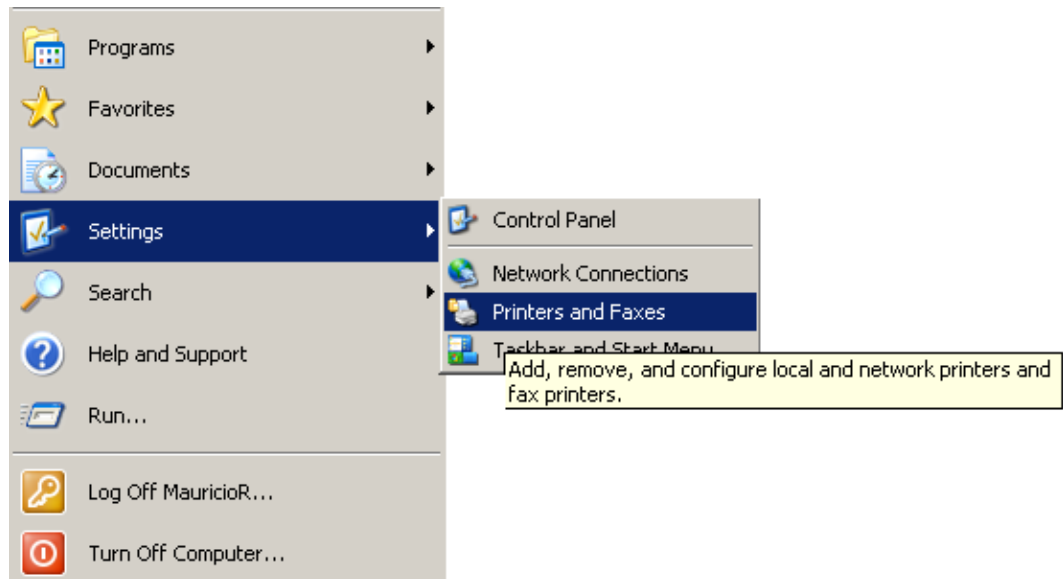
Scientific Data Systems, Inc.	
TITLE: COMPUTER	
Document Number:	REV:
Date: 11/09/2005 09:25:19p	Sheet: 1/1

Printer Installation

PRINTREX INSTALLATION IN WINDOWS XP

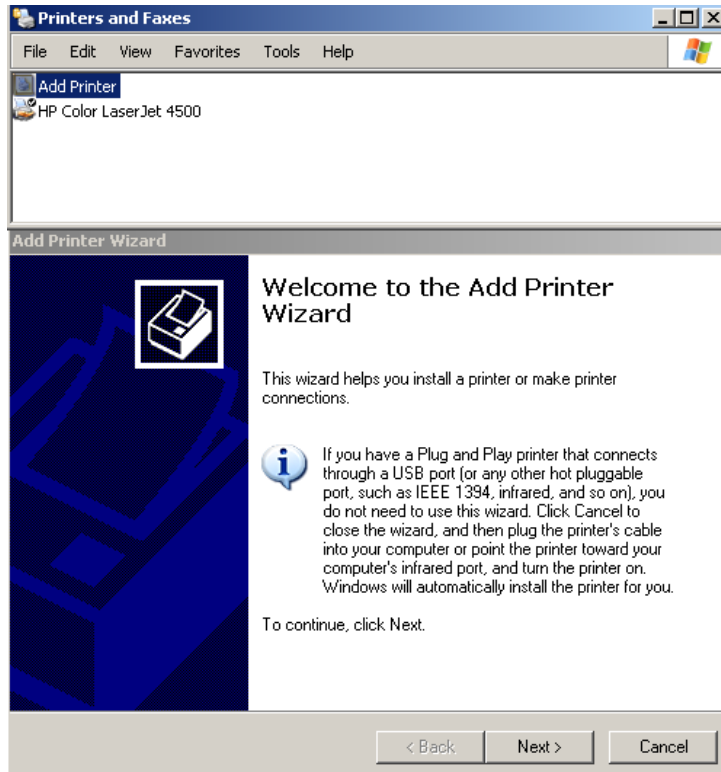
Prior printer installation, it is recommended to upgrade the Windows XP from the Internet.

- 1) Install the printer in windows XP. The CD warrior software must be in the CD Device
- 2) Plug in Belkin USB Printer Adapter cable into any available USB port
- 3) **Do not remove the Belkin USB printer from the chosen USB port**
- 4) **Do not plug in the USB printer adapter to a different USB port**
- 5) Select settings/Printers and Faxes

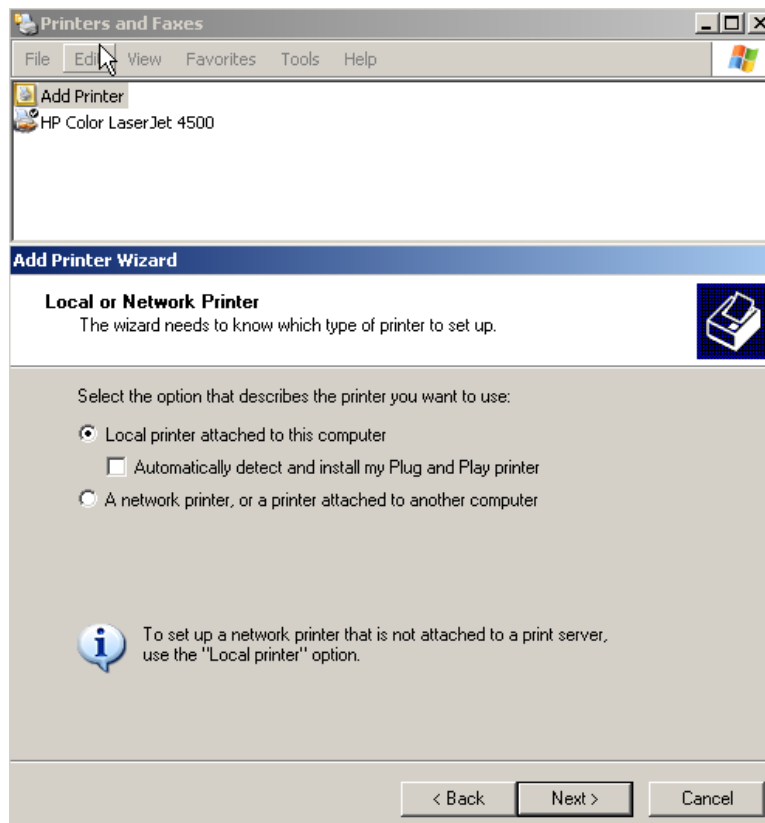


- 6) Add Printer

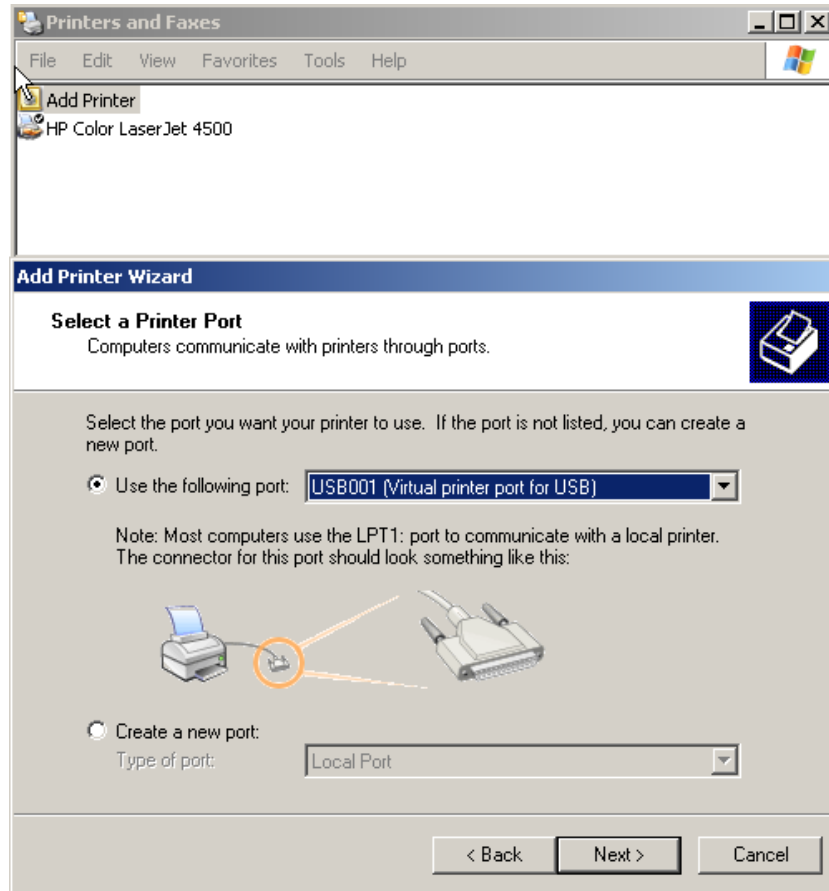




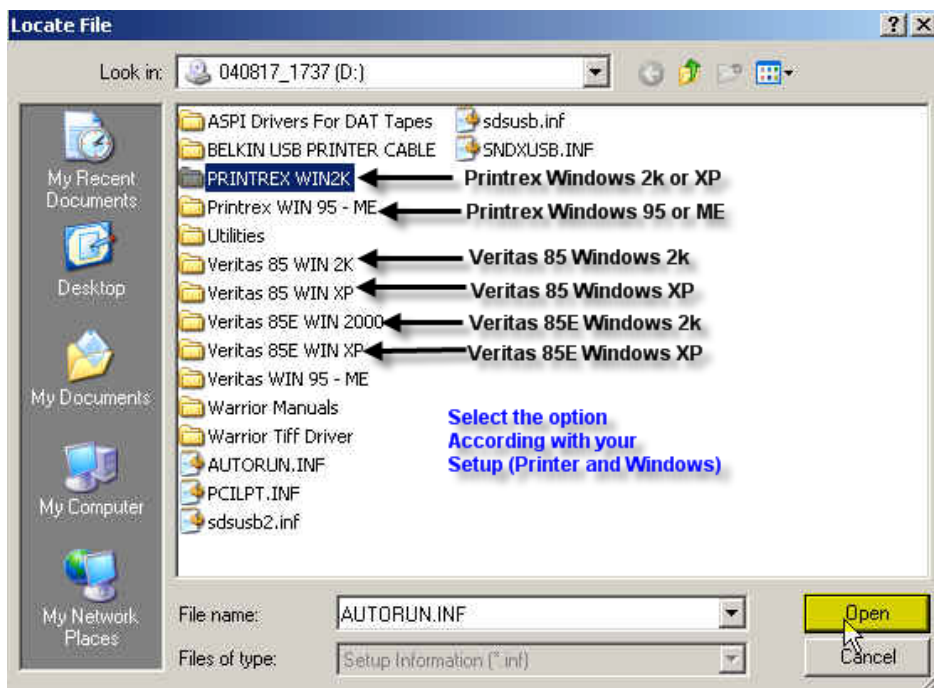
7) Select Next

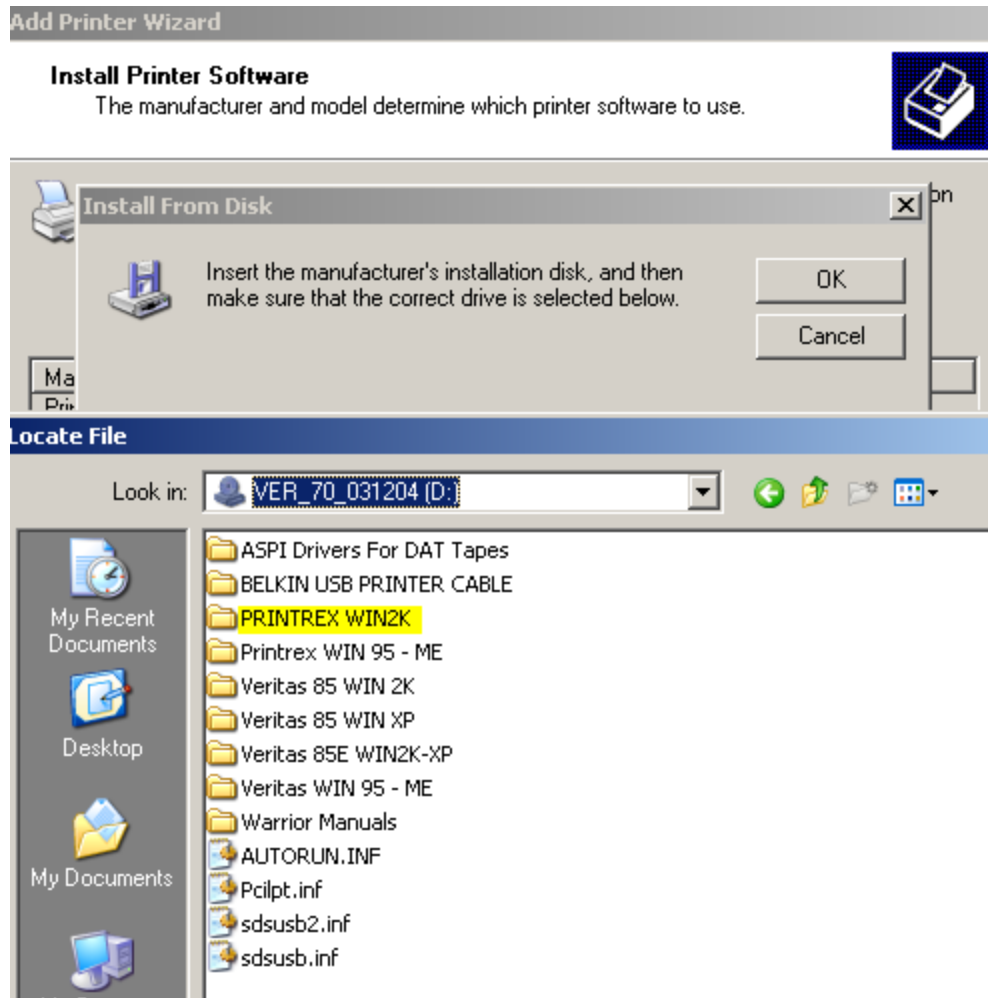


8) Uncheck (Automatically detect and install my Plug and Play printer) and Select Next

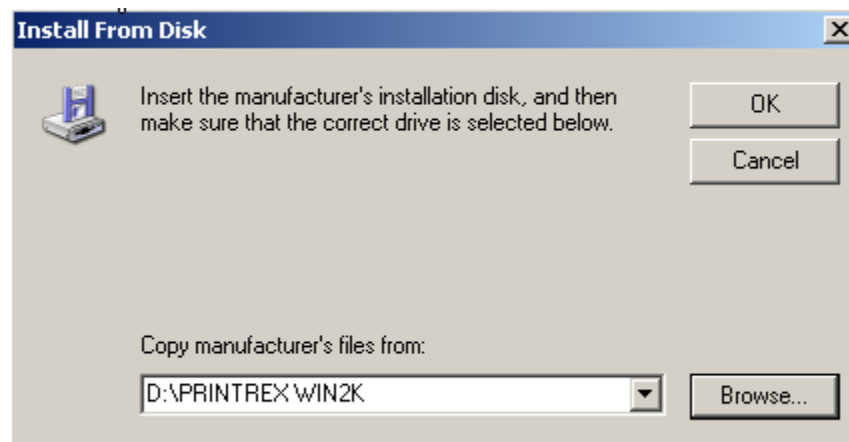


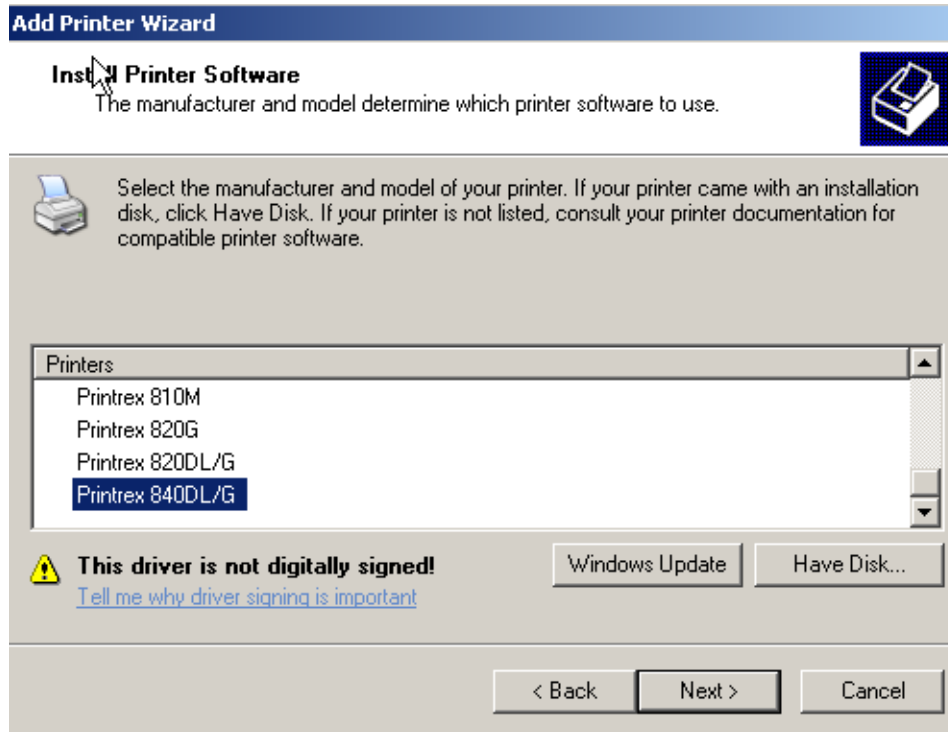
- 9) Select Printer Port if it is the first printer you connect to the USB. Select USB001 and then select Next



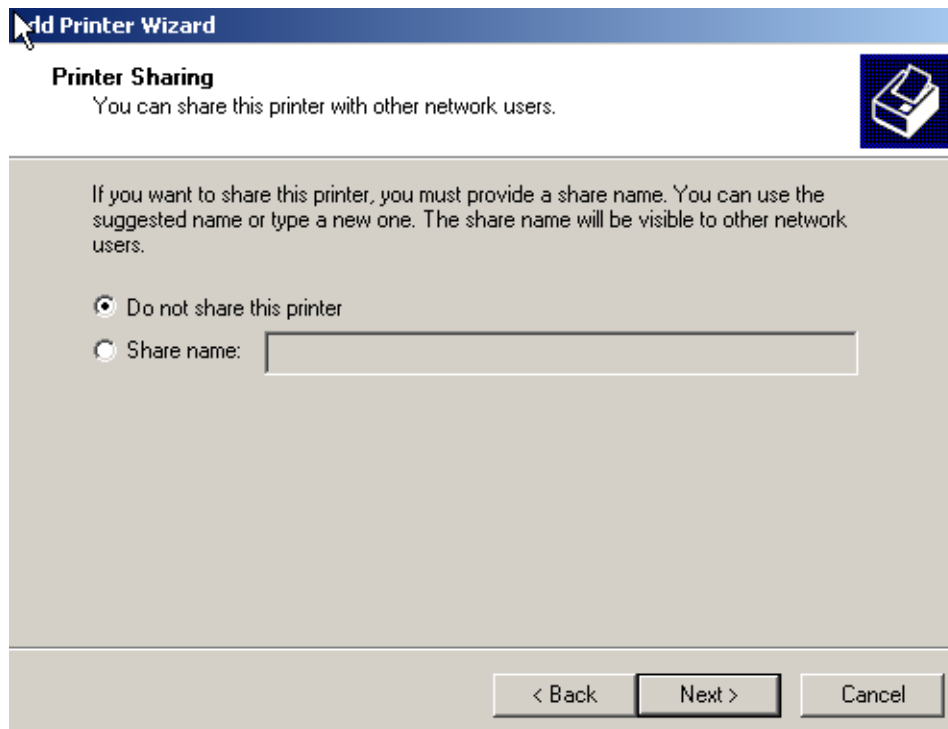


10) Select the Driver Printrex WIN2K is the driver to install in Win2K/ XP.

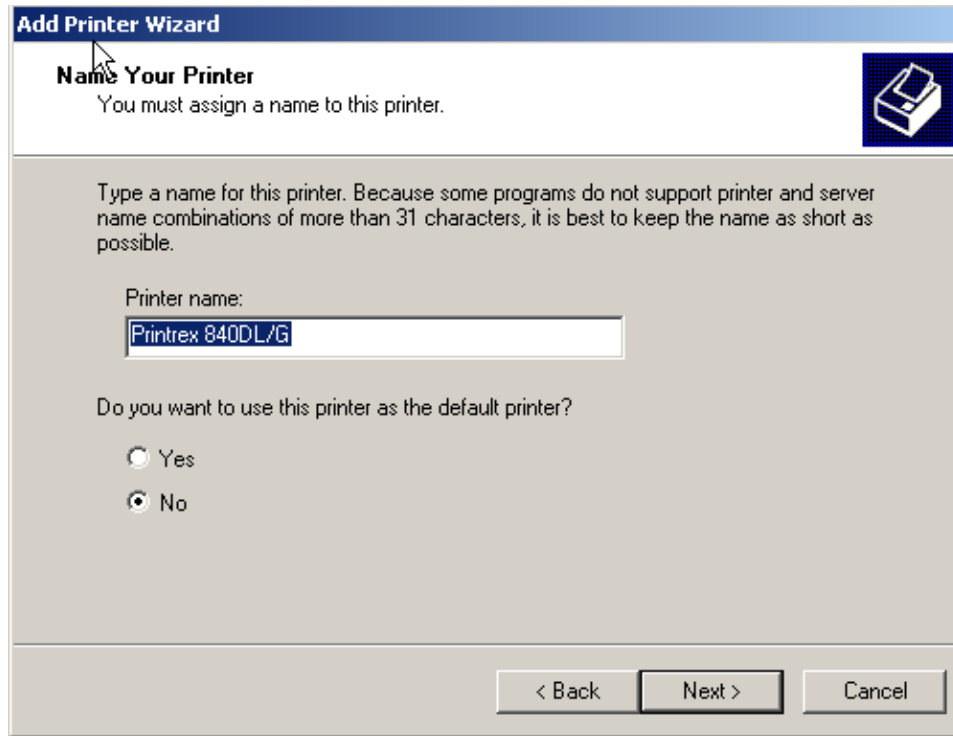




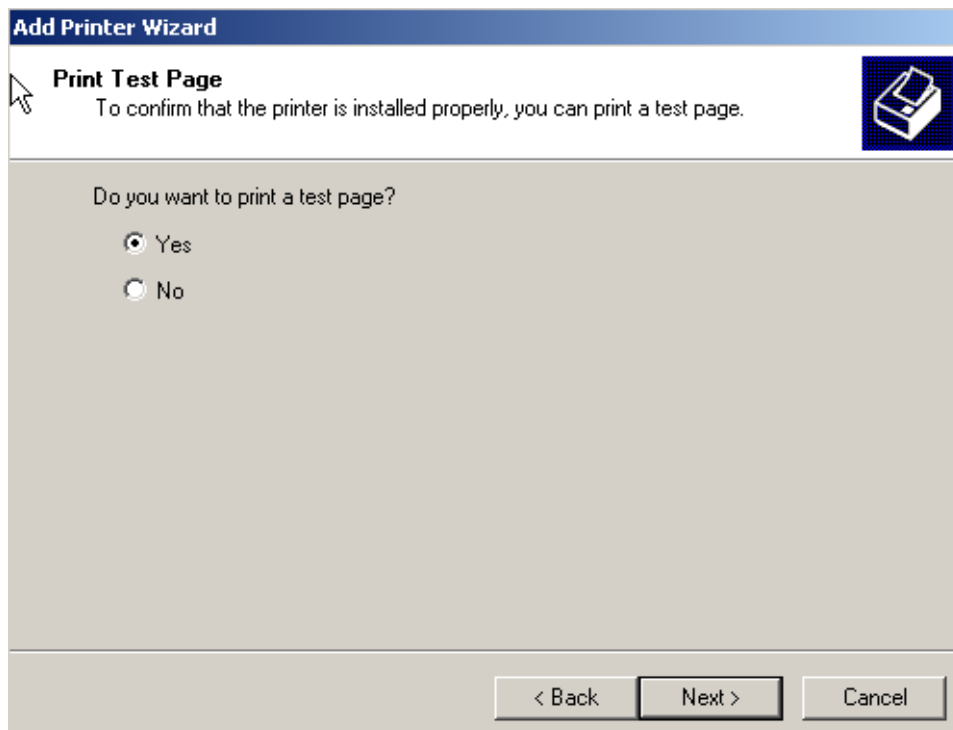
11) Select the Model Printrex 840DL/G or the Printrex Model you have in your system



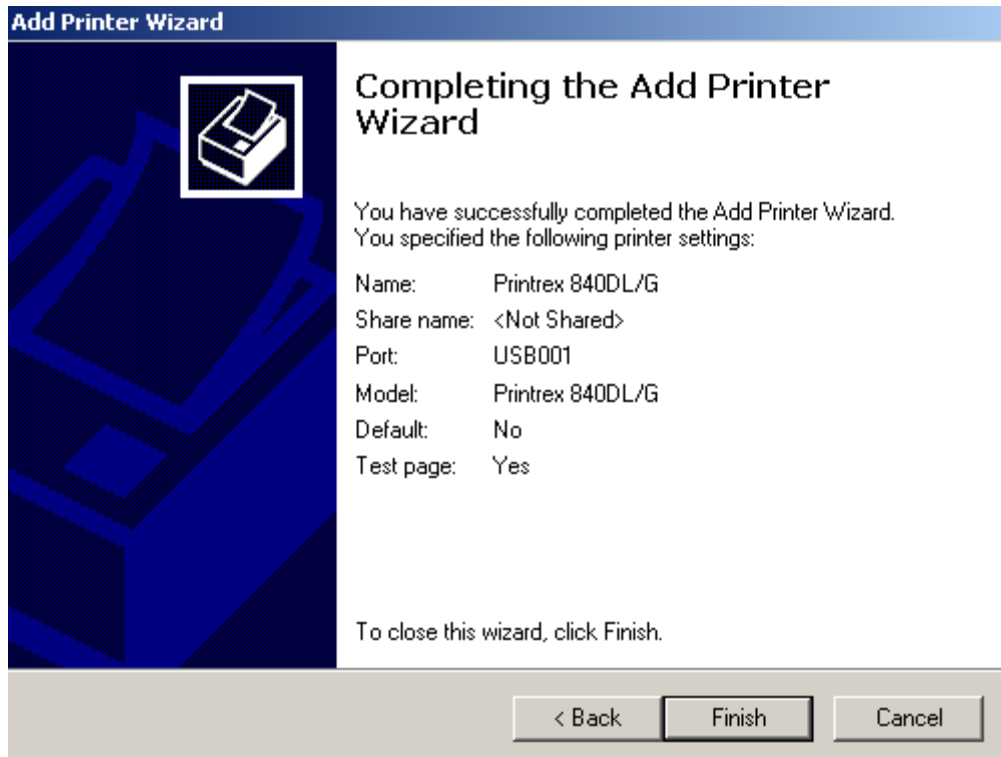
12) Select Next



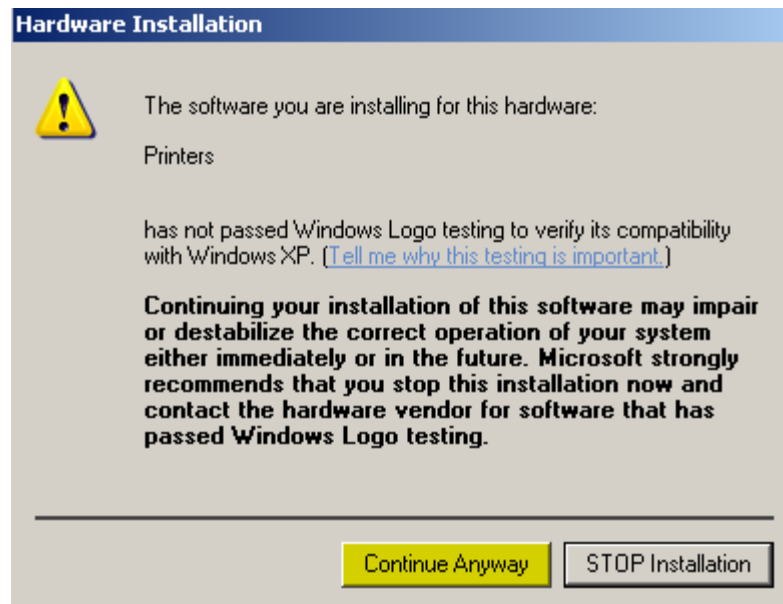
13) Select Next



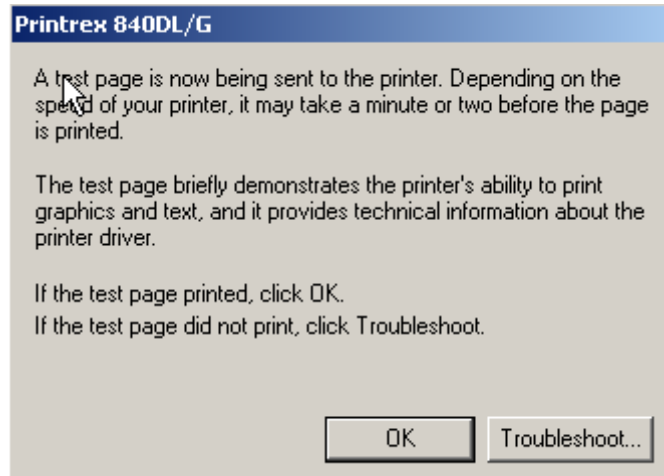
14) Select Next



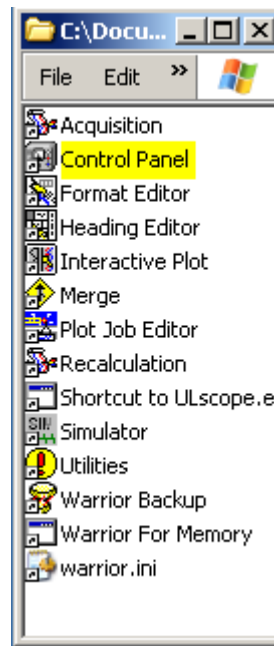
15) Select Finish



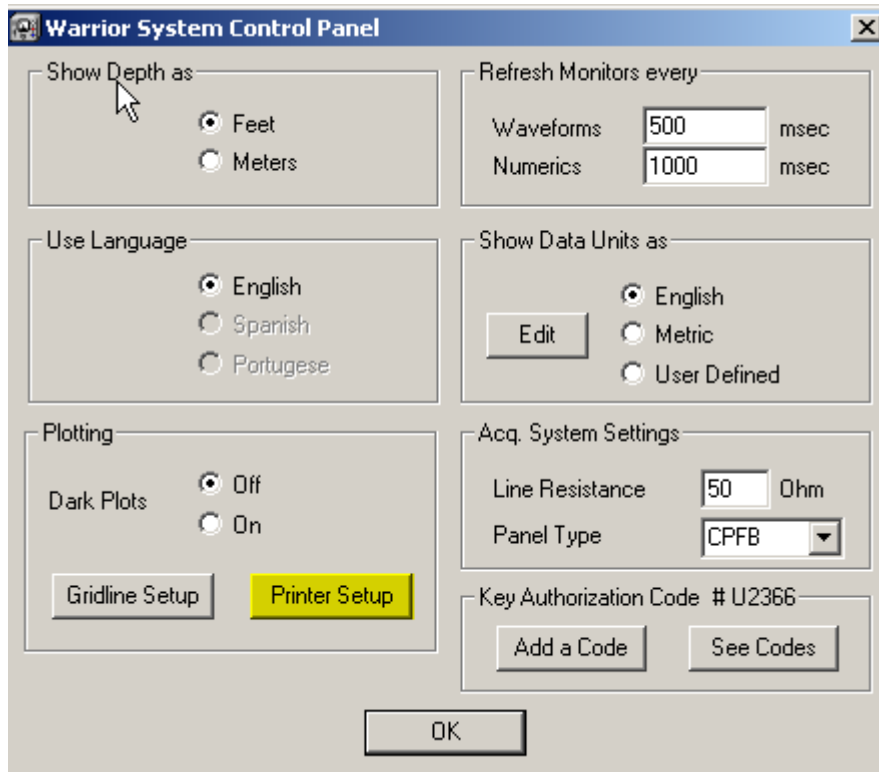
16) Select Continue Anyway



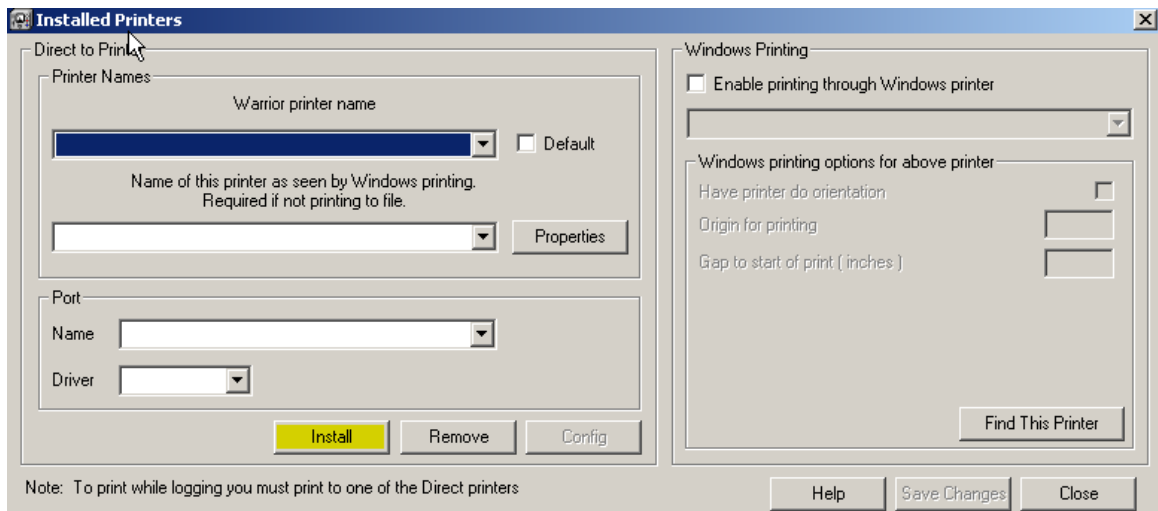
17) The Printer Test Page must appear. At this point, the Printer is installed in windows XP. Click OK.



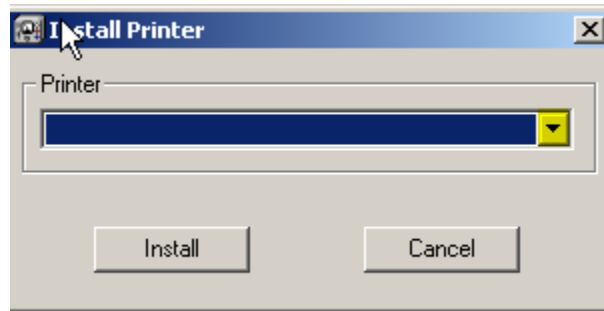
18) To install the Printer in Warrior, select the Control Panel option.



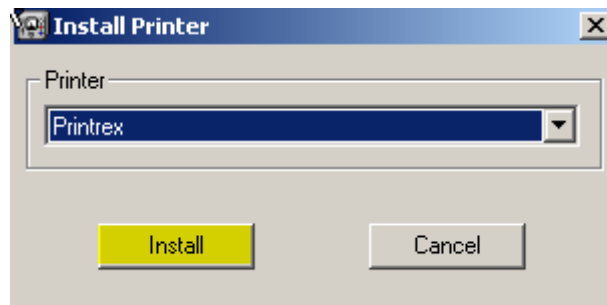
19) Select Printer Setup



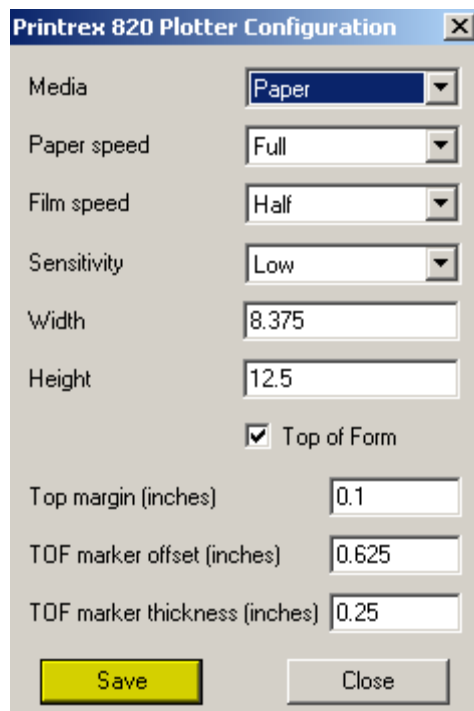
20) Select Install



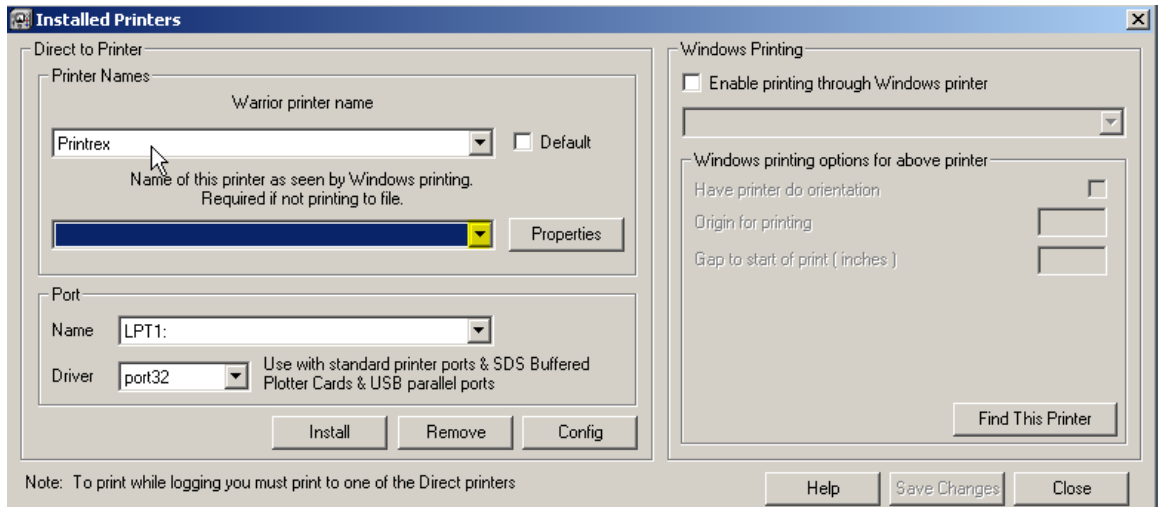
21) Select the option Printrex click on Drop-down



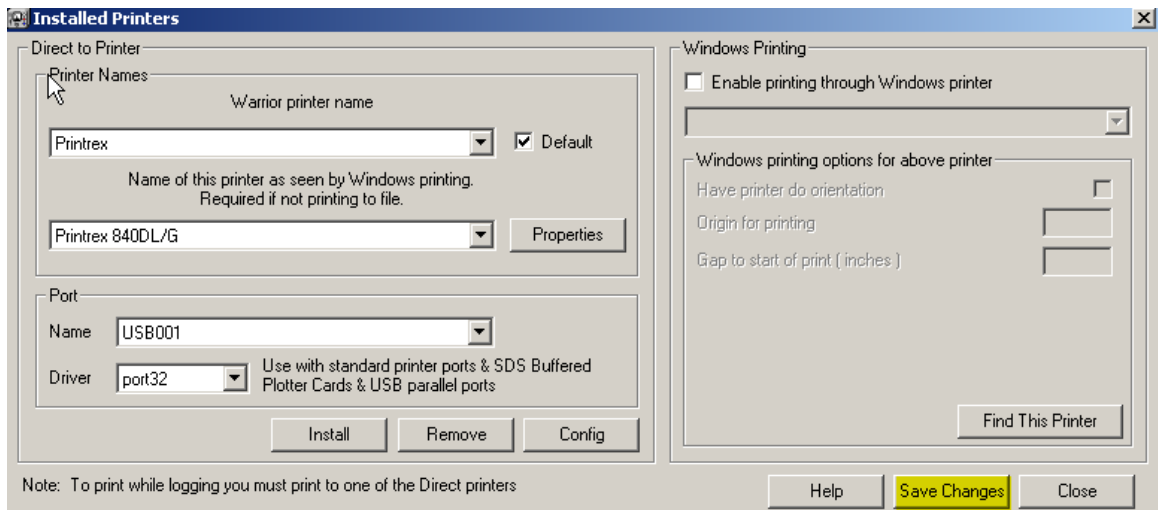
22) Select Install



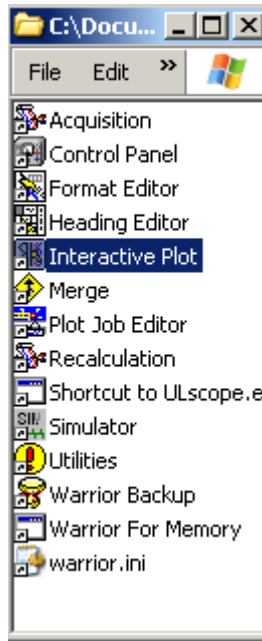
23) Select Save



24) On the Drop-down, select Printer Model Printrex 840DL/G



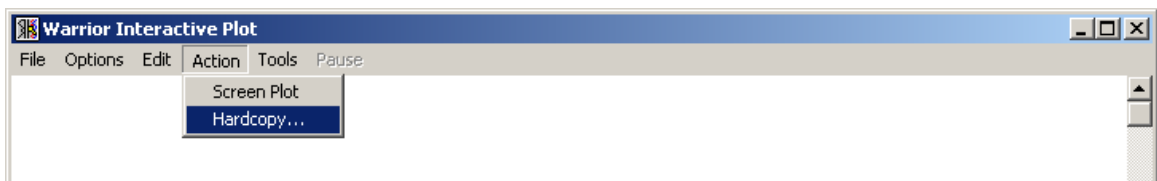
25) Select Save Changes and Close



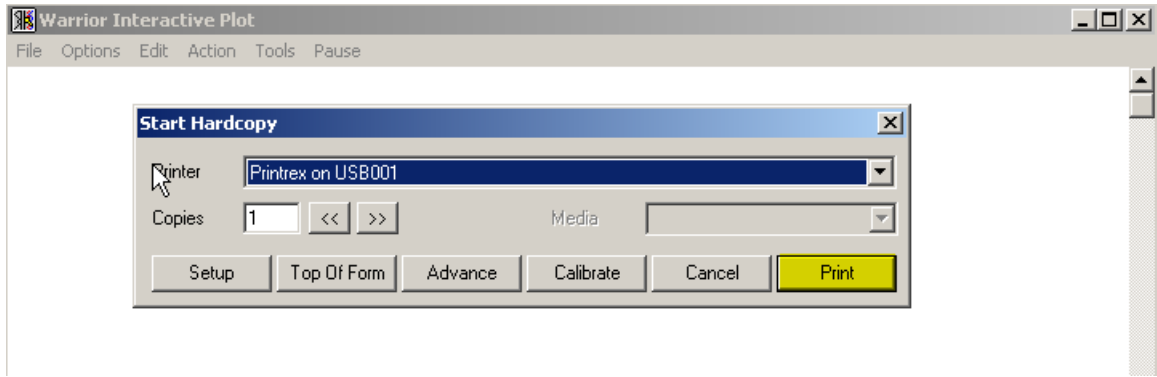
26) Select Interactive Plot in order to test the Print Out



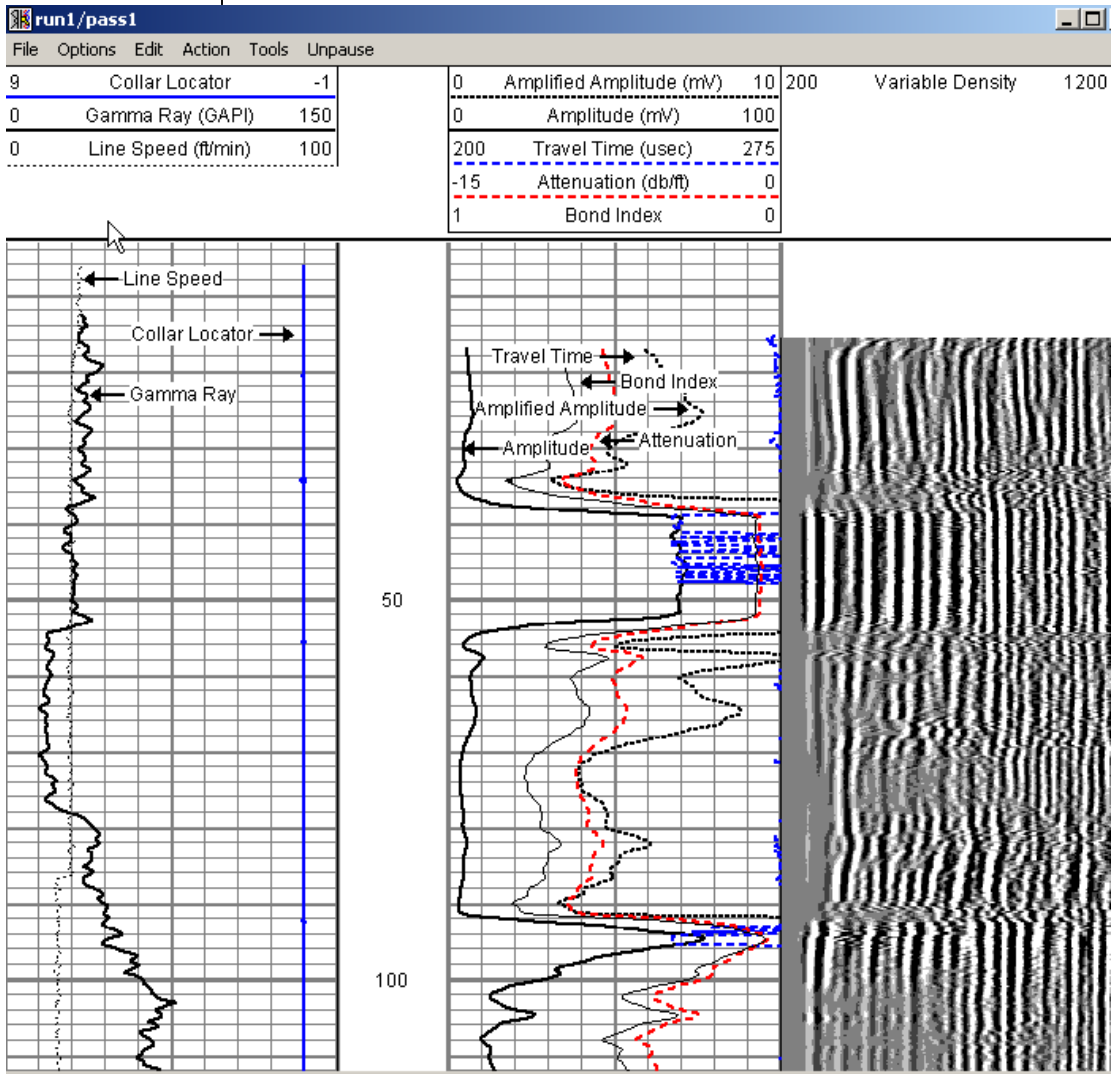
27) Select Action



28) Select Hardcopy

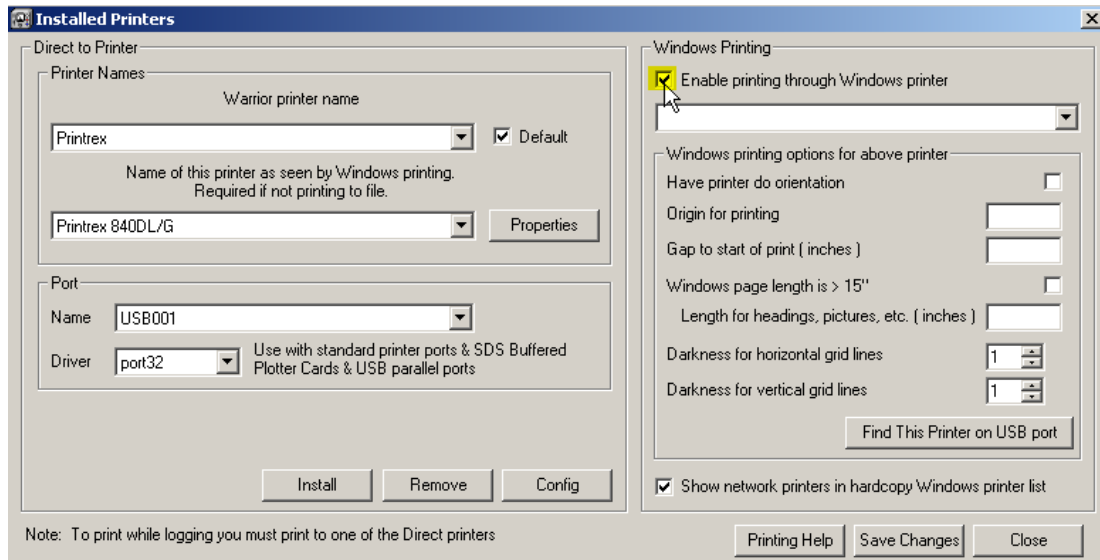


29) Select Print



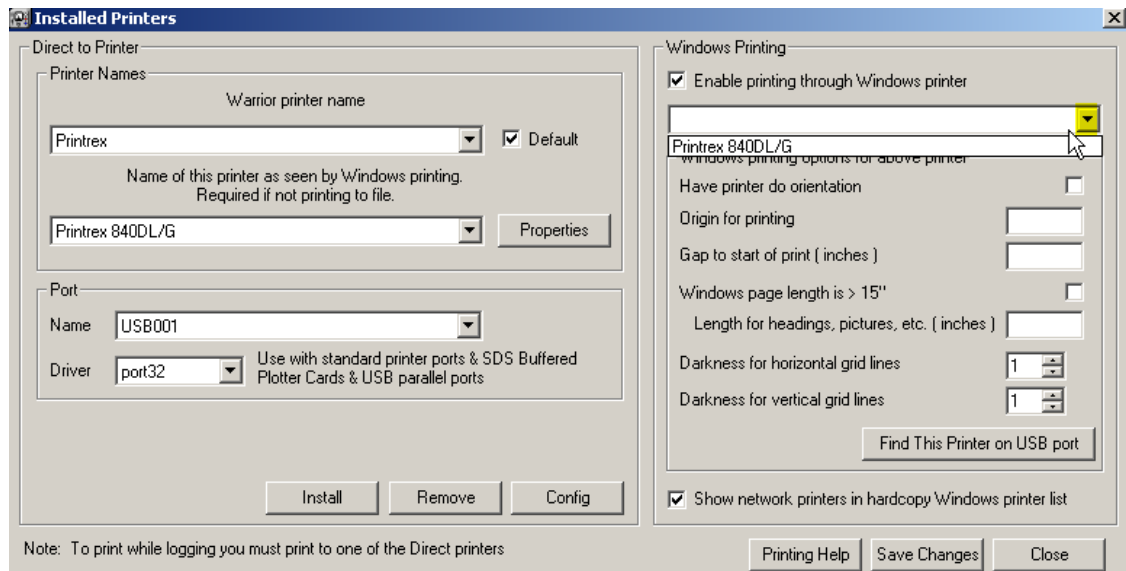
Finding Printer

We recommend to connect the Printer/Plotter in the same USB port. If you do not know which port is, start the following procedure:



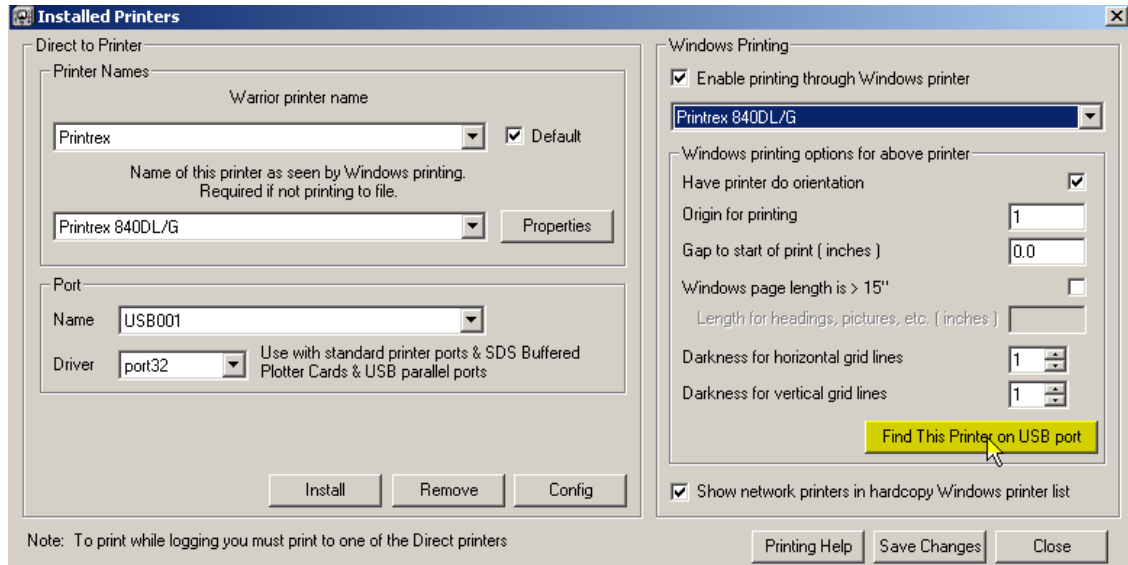
Installed Printers

Check Enable printing through Windows Printing.



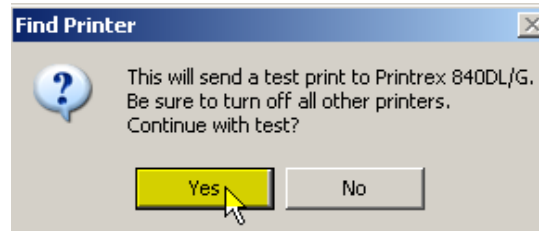
Installed Printers

On the Drop-down, Select Printer Model Printrex 840DL/G



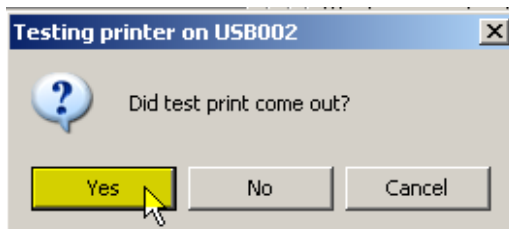
Installed Printers

Select Find this Printer on USB port.



Find Printer

Select Yes



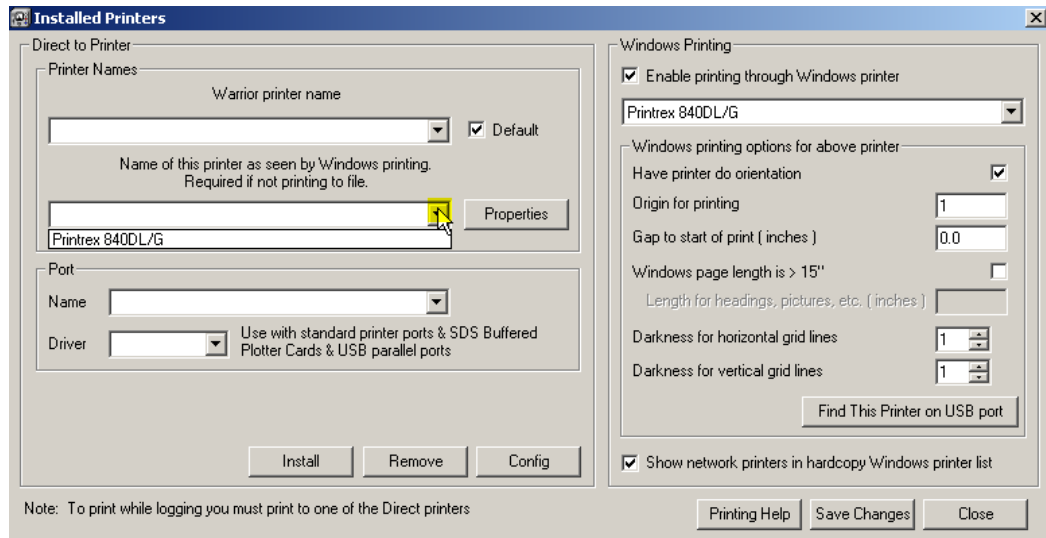
Testing Printer

If the test print came out, select Yes. This means the printer is connected to USB002



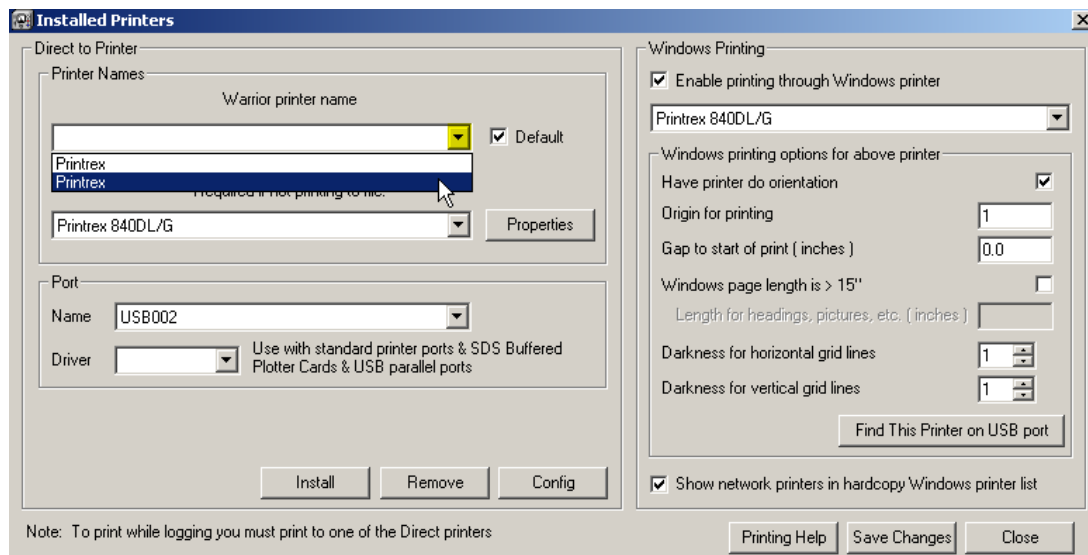
Printer Found

Select OK



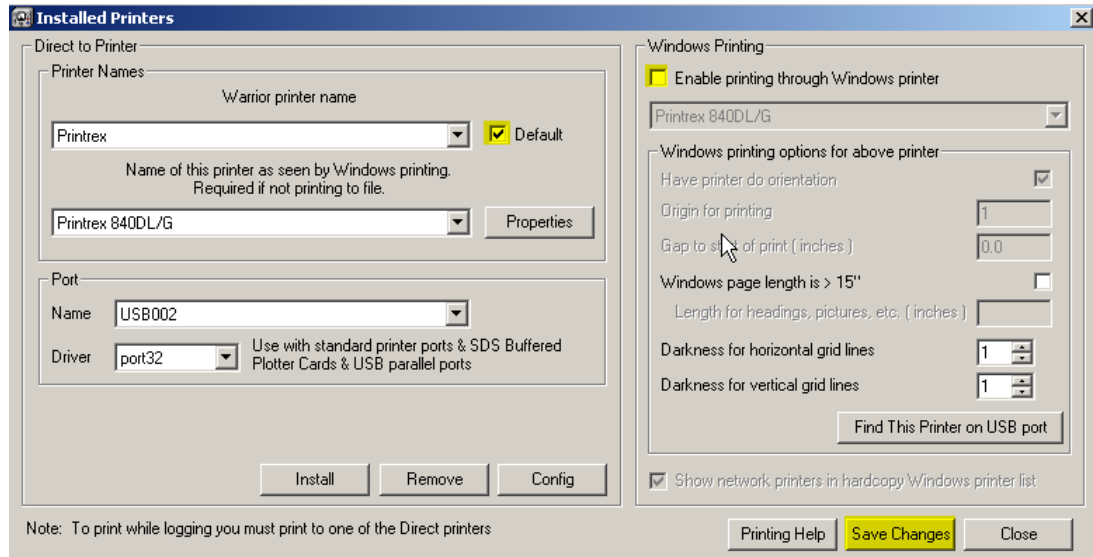
Installed Printers

On the Drop-down Select Printer Model Printrex 840DL/G



Installed Printers

On the drop-down select Printrex



Installed Printers

Uncheck Enable printing through Windows printer and then select Save Changes