

13.1.9 Extract Pass(es) to New Database.

The Extract Pass(es) to a New Database Utility allow the User to selectively copy passes from an existing database to a new one.



FIG: 13.1.23 Extract Pass(es) to New Database

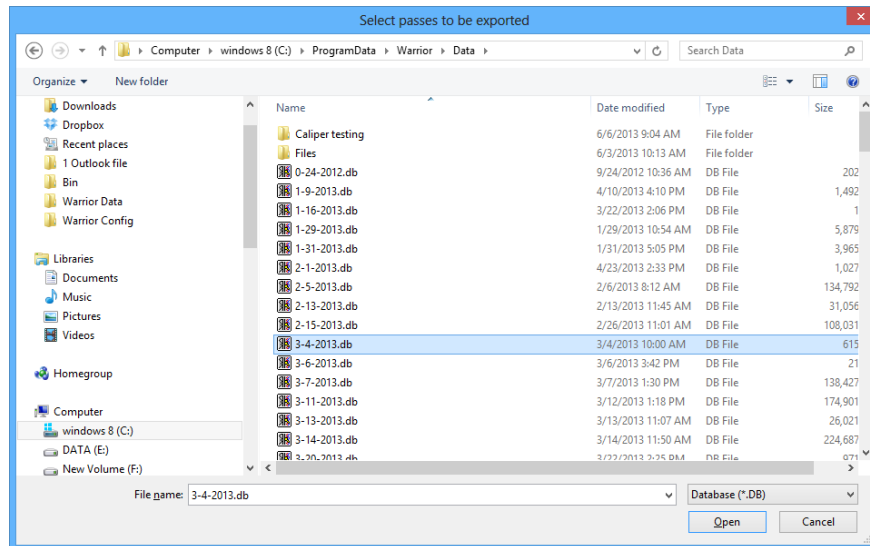


FIG: 13.1.24 Select Database

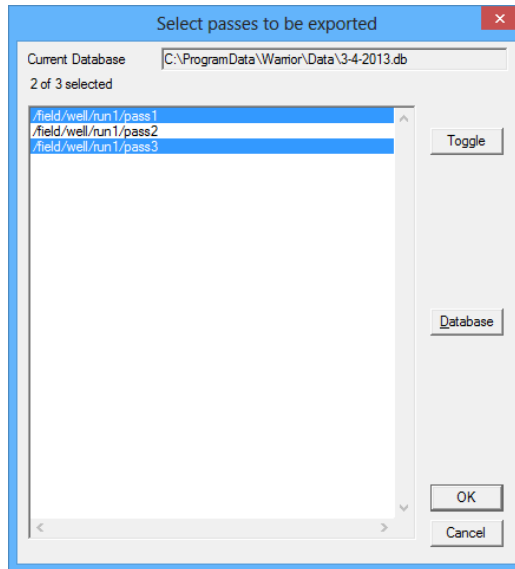


FIG: 13.1.25 Select Pass(es)

You will be first asked to select the database and the pass / passes that you want extracted. Hold {CTRL} to select multiple passes. Then you will be asked for the copy target where the extracted passes will be sent.

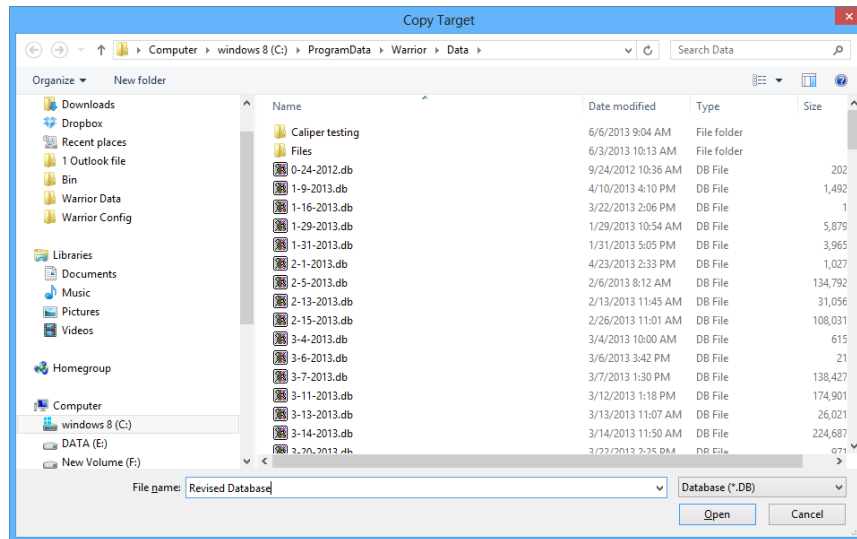


FIG: 13.1.26 Copy Target

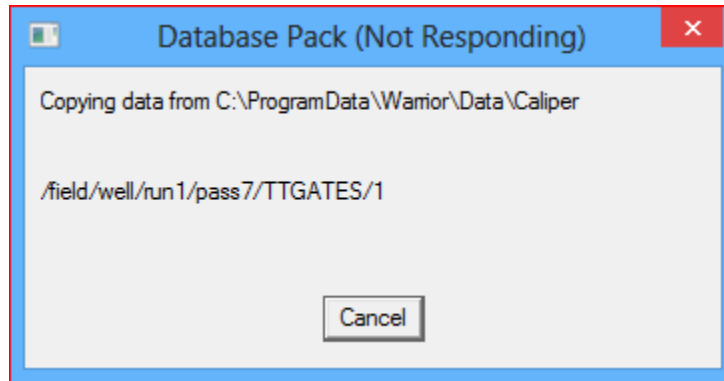


FIG: 13.1.27 Packing

Depending upon the amount of data being copied, you will see a progress showing each item being copied into the new database.