

FIG: 13.124 Calibrate

Note that the required length can be any length, so that the current hardcopy may be forced to match any correlation log, even one with an incorrect hardcopy scale.

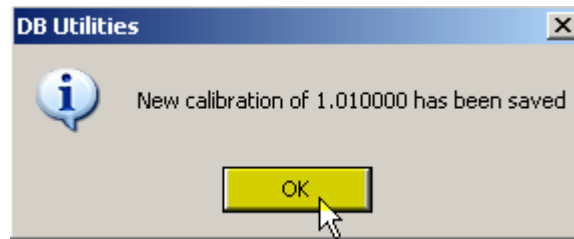


FIG: 13.125 Click on OK



VIDEO: 13.9 Printer Calibration

13.6.2 Configuration Backup/Restore

Every computer system will, sooner or later, suffer a failure, like a disk crash, where potential loss of programs and/or data is possible. This will generally happen at the most inconvenient time. **The importance of keeping current backups cannot be overemphasized.** It is vital that current backups are kept of all essential programs and data.

The warrior system is usually configured for the selection of services to be run by a given client. This information is primarily contained in three files, namely warrior.ini, services.ini, and tools.ini. A copy of all your files customized can be backed up to USB Memory/Hard disk/Floppy disk by using Backup/Restore utility 'Configuration Files'.

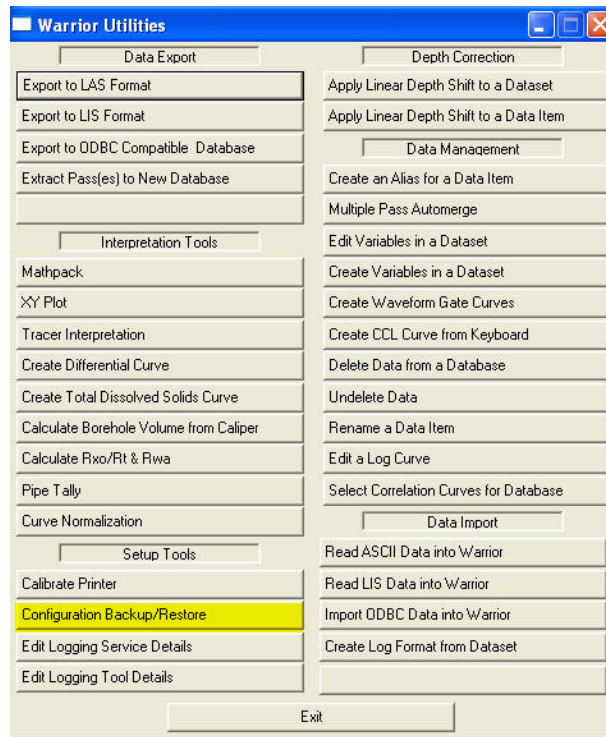


FIG: 13.126 Select Configuration Backup/Restore.

13.6.3 Configuration Files

Configuration files are the files that make one system different from another. This includes Tools.INI, Services.INI, Warrior.INI and other initialization files. It also includes presentation files, heading files, logo files, tool drawings, DSP scripts, external calibration files, and other files that are particular to a given system setup. They do not include any of the program files for Warrior since these are the same for every system with a given software revision.

A configuration file backup is normally made to removable media such as a floppy drive, CD, or a USB drive. There are two main purposes of a configuration backup. The first is to have a copy of files for a particular system off of the system in case of hard drive failure on the system. With a Warrior Installation CD and a configuration backup, the system can be restored to the same setup that was on the system when the configuration backup was made. The second purpose of a configuration backup is to transfer files, or portions on the files from one system to another.

The User selects whether to do a backup or a restore by clicking on the appropriate option. When the [Select Defaults] button is clicked, a predefined set of files is chosen to either backed up or restored. If the [Clear Selections] button is clicked, then no files will be selected at that time to be either backed up or restored. If the alternate option of Back up selected files or Restore selected files is chosen, the default files are then reselected. The User then may select additional files, or deselect certain files by clicking on the box to the left of the file name.

During a back up of configuration files, once the files have been selected, the User must select the Backup to file name. This can be done by either typing the path and file name into the Backup to text box, or by selecting the browse button to the right of the text box and selecting the drive and then typing in the file name. The selected files are then zipped and stored as the chosen file when the [Backup] button is clicked.

To restore files, the User must select both the Restore from file and the destination Restore to folder. The browse buttons can be used to select the appropriate files and folders. With few exceptions, the Restore to folder should be C:\Warrior\. When the Restore from folder has been selected, the Select files to restore window will show the files that are in the backup with the files to be restored indicated

with a check mark. The User then may select additional files or deselect files by clicking on the box to the left of the file name. When the [Restore] button is clicked, the selected files will be restored. Care should be taken when restoring files from one system to a different system. Warrior.INI contains the Keycodes for software access. If it is over written and the new Warrior.INI does not contain a valid Keycode for the system, access to the software will be denied.

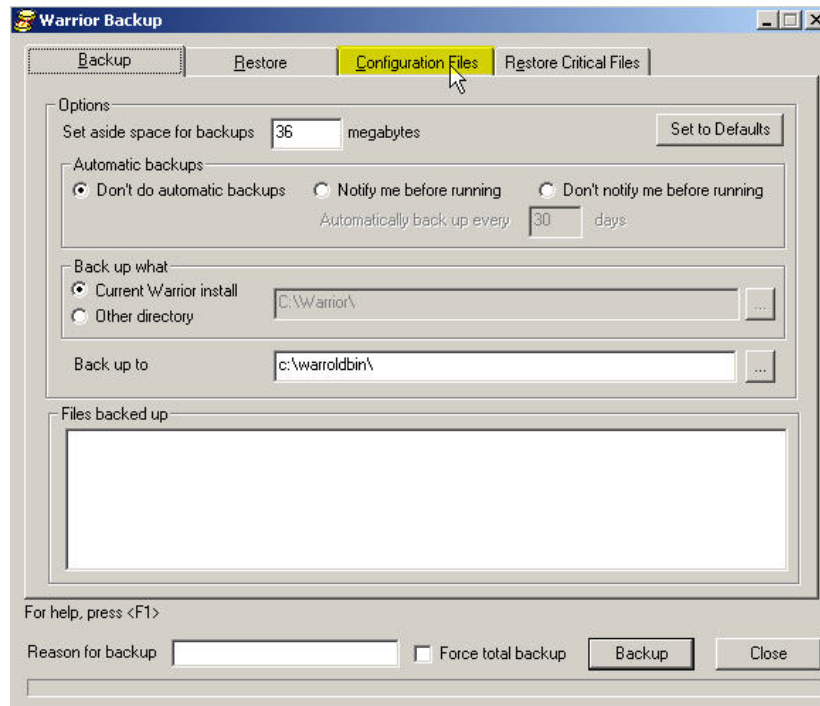


FIG: 13.127 Select the Configuration Files Tap.

If files are written to CD and subsequently restored to disk, they may be marked as read-only, which can prevent the proper operation of Warrior. This includes database files as well as configuration files. To change the attribute, use Windows Explorer, select the copied files, right click on them and select **properties**. Uncheck the 'Read Only' attribute and click the **Apply** button.

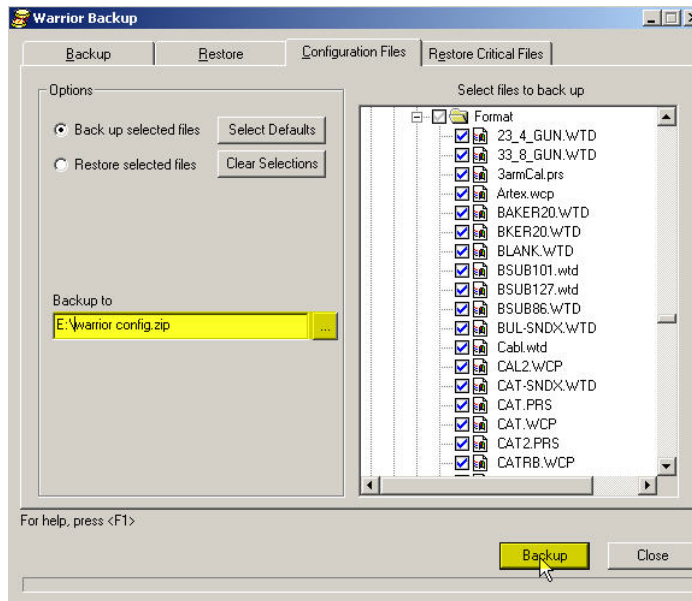


FIG: 13.128 Type Drive, File Name and Select Backup

13.6.4 Configuration Restore

There are three critical files that are required for acquiring data in a Warrior System. These are Warrior.INI, Tools.INI, and Services.INI. The User may select to do a backup when the computer is turned off after acquisition has been run. The maximum number of critical backups that will be retained is set to 50 by default.

With User supplied software, selected backup critical files may be compared with active files. When the restore button is clicked, the selected set of critical files will be restored to the system.



FIG: 13.129 Select Configuration Backup/Restore.

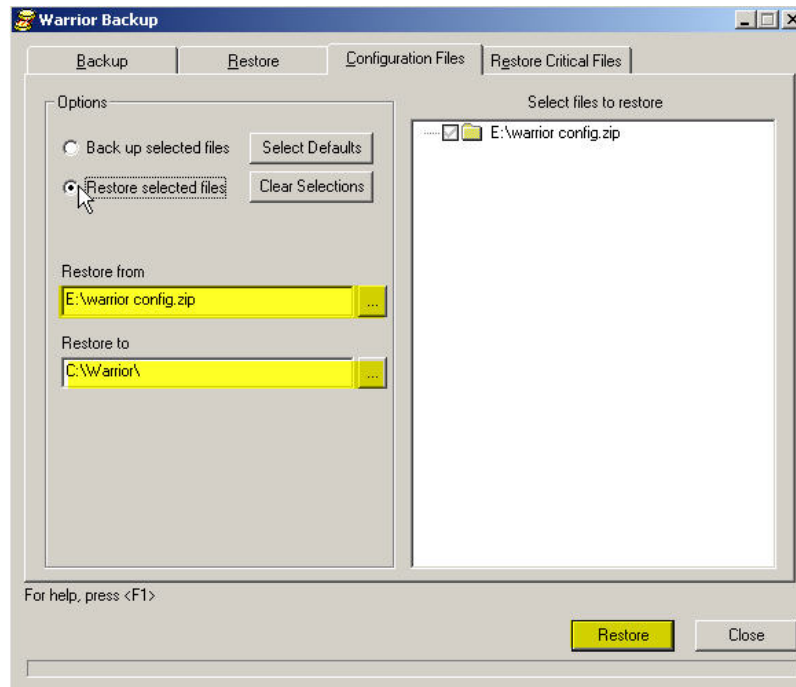


FIG: 13.130 Restore Select files

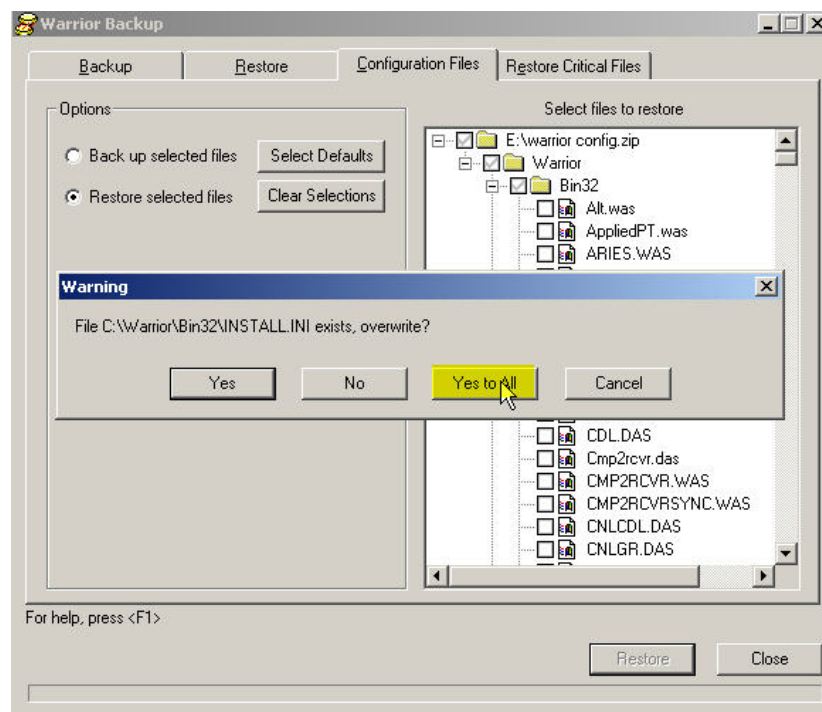


FIG: 13.131 Restore All Files

Restore of all your files customized can be restore from a USB Memory/Hard disk/Floppy by using Restore utility 'Configuration Files'. It means you restore all your presentations, tools string, services, key codes, etc.