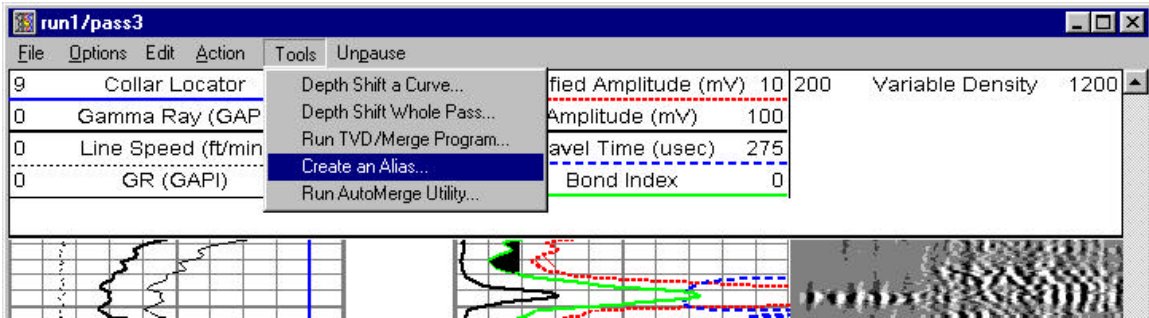


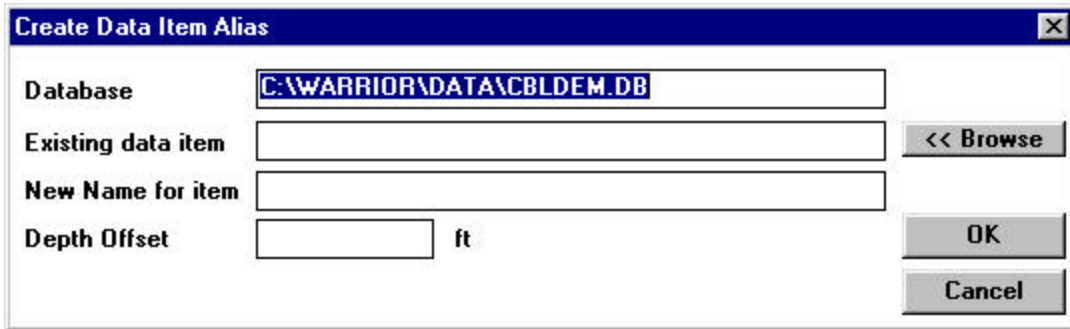
# Creating a Curve Alias

A curve from a pass in a database can be displayed into another pass of the same database by creating an alias. This includes displaying data from a previous pass into a pass currently being logged.

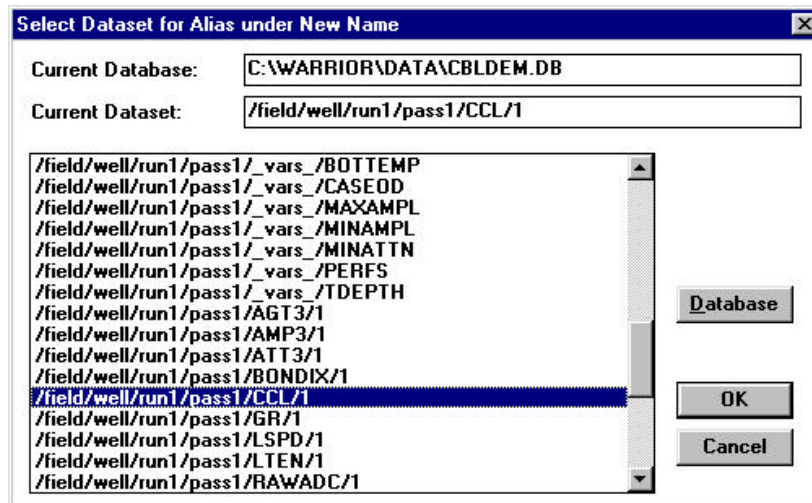
The first step is to bring up and display a log pass using interactive plot (Using Action – Record UP, from Acquisition automatically starts a new pass in interactive plot. Next, select Tools – Create an Alias.



When first invoked, the Create Data Item Alias opens as shown below.



Use the browse button to select a curve from a different pass with the same database



**Create Data Item Alias**

Database: C:\WARRIOR\DATA\CBLDEM.DB

Existing data item: /field/well/run1/pass1/CCL/1

New Name for item: /field/well/run1/pass1/CCL/1

Depth Offset:  ft

Buttons: << Browse, OK, Cancel

At this point the original pass name is shown in both the **existing data item** and the **new name for item** lines. The **new name for item** MUST be modified to show in the current pass that you have displayed. The field, well, run, and pass fields must exactly match the field, well, run, and pass of the currently displayed pass. Normally this means that the pass number be changed. If the currently displayed pass has a curve of the same name, the data item name must also be changed because a pass cannot have two data items of the same name.

**Create Data Item Alias**

Database: C:\WARRIOR\DATA\CBLDEM.DB

Existing data item: /field/well/run1/pass1/CCL/1


New Name for item: /field/well/run1/pass3/CCL\_1/1

Depth Offset:  ft

Buttons: << Browse, OK, Cancel

The example above will create an alias from the CCL curve in pass1 and display it in pass3 as a data item name CCL\_1. You may optionally add a depth offset to this curve to depth correct it. When the OK button is pressed the alias will be created, although at the present time there is no indication that it has been done. If the OK button is pressed more than once, the following error message will be displayed. This is not a problem, just an indication that the alias already exists.

**DB Utilities**

 The alias cannot be created because the entered name already exists.

OK

Now that the alias has been created, it must be displayed.

If the data item name already exists in the presentation, from interactive plot click Action – ScreenPlot once to clear the screen, and then click Action – ScreenPlot again to redisplay the log pass.

If the presentation does not contain the data item name, it must be added to the presentation. Either double click on the log scale displayed or click Edit – Log Format to bring up the Log Format Editor. Click the ADD button. The DB item name needs to be the data item name that was created. In this example CCL\_1. The track position and values need to be edited as desired. The presentation type will normally be a curve, but any of the other selections would be valid for that type of data. The line style selections can be edited as desired. And the scale labeling can be done as needed.

Once the edited presentation is saved, the curve should now display on the screen.